



2010

POPULATION & HOUSING CENSUS

DISTRICT ANALYTICAL REPORT

TAIN DISTRICT



Canada 

MINISTRY OF FOREIGN AFFAIRS OF DENMARK
DANIDA | INTERNATIONAL
DEVELOPMENT COOPERATION

GHANA STATISTICAL SERVICE, OCTOBER, 2014

Copyright © 2014 Ghana Statistical Service

PREFACE AND ACKNOWLEDGEMENT

No meaningful developmental activity can be undertaken without taking into account the characteristics of the population for whom the activity is targeted. The size of the population and its spatial distribution, growth and change over time, in addition to its socio-economic characteristics are all important in development planning.

A population census is the most important source of data on the size, composition, growth and distribution of a country's population at the national and sub-national levels. Data from the 2010 Population and Housing Census (PHC) will serve as reference for equitable distribution of national resources and government services, including the allocation of government funds among various regions, districts and other sub-national populations to education, health and other social services.

The Ghana Statistical Service (GSS) is delighted to provide data users, especially the Metropolitan, Municipal and District Assemblies, with district-level analytical reports based on the 2010 PHC data to facilitate their planning and decision-making.

The District Analytical Report for the Tain District is one of the 216 district census reports aimed at making data available to planners and decision makers at the district level. In addition to presenting the district profile, the report discusses the social and economic dimensions of demographic variables and their implications for policy formulation, planning and interventions. The conclusions and recommendations drawn from the district report are expected to serve as a basis for improving the quality of life of Ghanaians through evidence-based decision-making, monitoring and evaluation of developmental goals and intervention programmes.

For ease of accessibility to the census data, the district report and other census reports produced by the GSS will be disseminated widely in both print and electronic formats. The report will also be posted on the GSS website: www.statsghana.gov.gh.

The GSS wishes to express its profound gratitude to the Government of Ghana for providing the required resources for the conduct of the 2010 PHC. While appreciating the contribution of our Development Partners (DPs) towards the successful implementation of the Census, we wish to specifically acknowledge the Department for Foreign Affairs, Trade and Development (DFATD) formerly the Canadian International Development Agency (CIDA) and the Danish International Development Agency (DANIDA) for providing resources for the preparation of all the 216 district reports. Our gratitude also goes to the Metropolitan, Municipal and District Assemblies, the Ministry of Local Government, Consultant Guides, Consultant Editors, Project Steering Committee members and their respective institutions for their invaluable support during the report writing exercise. Finally, we wish to thank all the report writers, including the GSS staff who contributed to the preparation of the reports, for their dedication and diligence in ensuring the timely and successful completion of the district census reports.

Dr. Philomena Nyarko
Government Statistician

TABLE OF CONTENTS

PREFACE AND ACKNOWLEDGEMENT	iii
LIST OF TABLES	vi
LIST OF FIGURES	vii
ACRONYMS AND ABBREVIATIONS.....	viii
EXECUTIVE SUMMARY	ix
CHAPTER ONE: INTRODUCTION	1
1.1 Background	1
1.2 Physical Features.....	1
1.3 Political and Administrative Structure	2
1.4 Social and Cultural Structure	4
1.5 Economy.....	4
1.6 Census Methodology, Concepts and Definitions	5
1.7 Organization of the Report.....	15
CHAPTER TWO: DEMOGRAPHIC CHARACTERISTICS.....	16
2.1 Introduction	16
2.2 Population Size and Distribution	16
2.3 Age-Sex Structure	17
2.4 Fertility, Mortality and Migration	19
CHAPTER THREE: SOCIAL CHARACTERISTICS	27
3.1 Introduction	27
3.2 Household Size, Composition and Structure.....	27
3.3 Marital status.....	30
3.4 Nationality.....	37
3.5 Religious Affiliation.....	37
3.6 Literacy and Education.....	38
CHAPTER FOUR: ECONOMIC CHARACTERISTICS	41
4.1 Introduction	41
4.2 Activity Status	41
4.3 Occupation	45
4.4 Industry of employment	46
4.5 Employment status	47
4.6 Employment Sector	48
CHAPTER FIVE: INFORMATION COMMUNICATION TECHNOLOGY	50
5.1 Introduction	50
5.2 Ownership of Mobile phones	50
5.3 Use of internet	50
5.4 Household Ownership of Desktop or Laptop computer.....	51
CHAPTER SIX: DISABILITY	52
6.1 Introduction	52
6.2 Population with disability.....	52
6.3 Type of Disability.....	53
6.4 Distribution by locality type.....	54
6.5 Disability and Economic Activity	54

6.6	Disability and Education	57
CHAPTER SEVEN: AGRICULTURAL ACTIVITIES.....		59
7.1	Introduction	59
7.2	Households in Agriculture	59
7.3	Types of Farming Activities.....	59
7.4	Types Livestock, and Other Animals Reared.....	60
CHAPTER EIGHT: HOUSING CONDITIONS.....		62
8.1	Introduction	62
8.2	Housing Stock	62
8.3	Type of Dwelling, Holding and Tenancy Arrangements	63
8.4	Construction materials.....	66
8.5	Room Occupancy	68
8.6	Access to Utilities and Household facilities.....	70
8.7	Main Source of Water for Drinking and for Other Domestic Use	72
8.8	Bathing and Toilet Facilities	74
8.9	Method of Waste Disposal	76
CHAPTER NINE: SUMMARY OF FINDINGS, CONCLUSIONS AND		
POLICY RECOMMENDATIONS		78
9.1	Introduction	78
9.2	Summary of Findings and Conclusion	78
9.3	Policy Recommendations	82
REFERENCES.....		85
APPENDICES		86
LIST OF CONTRIBUTORS		88

LIST OF TABLES

Table 2.1: Population by age, sex and type of locality	17
Table 2.2: Reported total fertility rate, general fertility rate and crude birth rate by district	21
Table 2.3: Female population 12 years and older by age, children ever born, children surviving and sex of child	22
Table 2.4: Total Population, deaths in households and crude death rate, by district.....	23
Table 2.5: Causes of deaths in households	24
Table 2.6: Birthplace by duration of residence of migrants.....	26
Table 3.1: Household size by locality	28
Table 3.2: Household population by composition and sex	29
Table 3.3: Household population by structure and sex.....	30
Table 3.4: Persons 12 years and older by sex, age-group and marital status.....	33
Table 3.5: Persons 12 years and older by sex, marital status and level of education	35
Table 3.6: Persons 12 years and older by sex, marital status and economic activity status	36
Table 3.7: Population by nationality and sex.....	37
Table 3.8: Population by religion and sex	37
Table 3.9: Population 11 years and older by sex, age and literacy status.....	38
Table 3.10: Population 3 years and older currently attending school or attended school in the past by level of education and sex	40
Table 4.1: Activity status of population 15 years and older by sex	42
Table 4.2: Economic activity status of population 15 years and older by sex and age	43
Table 4.3: Employed population 15 years and older by occupation and sex.....	46
Table 4.4: Employed population 15 years and older by industry and sex	47
Table 4.5: Employed population 15 years and older by employment status and sex	48
Table 4.6: Employed population 15 years and older by employment sector and sex.....	49
Table 5.1: Population 12 years and older by mobile phone ownership and Sex	50
Table 5.2: Population 12 years and older by internet facility usage, and sex.....	51
Table 5.3: Households having desktop/laptop computers and sex of head	51
Table 6.1: Population with disability	53
Table 6.2: Persons 15 years and older with disability by economic activity status and sex.....	56
Table 6.3: Population 3 years and older by sex, disability type and level of education	58
Table 7.1: Agricultural activity of household members by locality	60
Table 7.2: Distribution of livestock and keepers	61
Table 8.1: Stock of houses and households by type of locality	63
Table 8.2: Type of occupied dwelling unit by sex of household head and type of locality	64
Table 8.3: Ownership status of dwelling by sex of household head and type of locality.....	66
Table 8.4: Main construction materials for the outer wall of dwelling unit by type of locality	67
Table 8.5: Main construction materials for the floor of dwelling unit by type of locality	67
Table 8.6: Main construction material for roofing of dwelling unit by type of locality.....	68
Table 8.7: Household size and number of sleeping rooms occupied in dwelling unit	69
Table 8.8: Main source of lighting of dwelling unit by type of locality	70
Table 8.9: Main source of cooking fuel, and cooking space used by households	71
Table 8.10: Main source of water of dwelling unit for drinking and other domestic purposes	73
Table 8.11: Type of toilet facility and bathing facility used by household by type of locality.....	75
Table 8.12: Method of solid and liquid waste disposal by type of locality	77

Table A1: Total population, sex, number of households and houses in the 20 largest communities	86
Table A2: Population by age group in the 20 largest communities	87

LIST OF FIGURES

Figure 1.1: District Map of Tain	3
Figure 2.1: Population pyramid of Tain district, 2010.....	19
Figure 2.2: Reported age specific death rates by sex	25
Figure 3.1: Marital status	31
Figure 3.2: Marital status 12 years and older by sex	31
Figure 6.1: Distribution of Disability Type	54
Figure 8.1: Type of dwelling by type of locality	64
Figure 8.2: Main construction material for roofing	68

ACRONYMS AND ABBREVIATIONS

CBR	Crude Birth Rate
CDR	Crude Death Rate
EA	Enumeration Area
GDP	Gross Domestic Product
GFR	General Fertility Rate
GSDP	Ghana Statistics Development Plan
GSS	Ghana Statistical Service
ICT	Information Communication Technology
JHS	Junior High School
MDAs	Ministries, Departments and Agencies
MDGs	Millennium Development Goals
NCPEC	National Census Publicity and Education Committee
NCSC	National Census Steering Committee
NCTAC	National Census Technical Advisory Committee
PES	Post Enumeration Survey
PHC	Population and Housing Census
PWDs	Persons living with disabilities
SHS	Senior High School
TFR	Total Fertility Rate
UNFPA	United Nations Population Fund

EXECUTIVE SUMMARY

Introduction

The district census report is the first of its kind since the first post-independence census was conducted in 1960. The report provides basic information about the district. It gives a brief background of the district, describing its physical features, political and administrative structure, socio-cultural structure and economy. Using data from the 2010 Population and Housing Census (2010 PHC), the report discusses the population characteristics of the district, fertility, mortality, migration, marital status, literacy and education, economic activity status, occupation, employment; Information Communication Technology (ICT), disability, agricultural activities and housing conditions of the district. The key findings of the analysis are as follows (references are to the relevant sections of the report).

Population size, structure and composition

The population of Tain District, according to the 2010 Population and Housing Census, is 88,104 representing 3.8 percent of the region's total population. Males constitute 49.4 percent and females represent 50.6 percent. More than half (51.5%) of the population of the district is rural. The district has a sex ratio of 97.6. The population of the district is youthful (40.3%) depicting a broad base population pyramid which tapers off with a small number of elderly persons (5.8%). The total age dependency ratio for the district is 85.5, the age dependency ratio for males is slightly lower (85.2) than that of females (85.9).

Fertility, mortality and migration

The Total Fertility Rate (TFR) for the district 3.5. The General Fertility Rate is 103.4 births per 1000 women aged 15-49 years which is lower than the regional average of 105.9. The Crude Birth Rate (CBR) is 24.3 per 1000 population. The crude death rate for the district is 6.4 per 1000. The death rate for males is highest for age 65 and older representing 47 deaths per 1000 population while for the females; the highest death rate of 28 deaths per 1000 population is for ages 65 and older. Accident/violence/homicide/suicide accounted for 5.5 percent of all deaths while other causes constitute 94.5 percent of deaths in the district. Majority of migrants (63.9 percent) living in the district were born in another region while 36.1 percent were born elsewhere in the Brong Ahafo Region. For migrants born in another region, those born in Upper West Region constitute 62.2 percent followed by Northern Region with 9.3 percent.

Household Size, composition and structure

The district has a household population of 87,245 with a total number of 16,313 households. The average household size in the district is 5.3 persons per household. Children constitute the largest composition of the household structure accounting for 42.3 percent. Spouses form about 8.7 percent. Nuclear households (head, spouse(s) and children) constitute 21.5 percent of the total number of households in the district.

Marital status

About four in ten (42.8%) of the population aged 12 years and older are married, 40.3 percent have never married, 6.2 percent are in consensual unions, 5.1 percent are widowed, 4.1 percent are divorced and 1.6 percent are separated. By age 25-29 years, more than half of females (61.2%) are married compared to a little less than one-third of males (29.0%). At age 65 and above, widowed females account for as high as 52.8 percent while widowed males

account for only 7.4 percent. Among the married, 52.3 percent have no education while about 14.2 percent of the unmarried have never been to school. More than nine in ten of the married population (91.7%) are employed, 0.7 percent are unemployed and 7.5 percent are economically not active. A greater proportion of those who have never married (43.2%) are economically not active with 1.2 percent unemployed.

Nationality

The proportion of Ghanaians by birth in the district is 96.0 percent. Those who have naturalised constitute 0.5 percent and the non-Ghanaian population in the district is 1.9 percent.

Literacy and education

Of the population 11 years and older, 64.0 percent are literate and 36.0 percent are non-literate. The proportion of literate males is higher (71.5 %) than that of females (56.6%). Seven out of ten people (71.2%) indicated they could speak and write both English and Ghanaian languages. Of the population aged 3 years and older in the district who are currently attending school, 49.4 percent are in primary school while 18.4 percent are in JSS/JHS. For those who have attended school in the past, 36.1 percent have attended JSS/JHS and 23.6 percent have attended primary school.

Economic activity status

About 81.2 percent of the population aged 15 years and older are economically active while 18.8 per cent are economically not active. Of the economically active population, 98.7 percent are employed while 1.3 percent are unemployed. For those who are economically not active, a larger percentage of them are students (50.4%), 22.8% perform household duties and 7.8 percent are disabled or too sick to work. Six out of ten (63.1%) unemployed are seeking work for the first time.

Occupation

Of the employed population, about 80.8 percent are engaged as skilled agricultural, forestry and fishery workers, 6.2 percent in service and sales, 5.6 percent in craft and related trade, and 3.9 percent are engaged as managers, professionals, and technicians.

Employment status and sector

Of the population 15 years and older 67.1 percent are self-employed without employees, 22.7 percent are contributing family workers, 1.0 percent are casual workers and 0.5 percent are domestic employees (house helps). Overall, men constitute the highest proportion in each employment category except the contributing family workers, domestic employees and apprentices. The private informal sector is the largest employer in the district, employing 95.2 percent of the population followed by the public sector with 3.1 percent.

Information communication technology

Of the population 12 years and above, 35.1 percent have mobile phones. Men who own mobile phones constitute 40.5 percent as compared to 29.9 percent of females. About one percent of the population 12 years and older use internet facilities in the district. Only 399 households representing 2.4 percent of the total households in the district have desktop/laptop computers.

Disability

About 2.0 percent of the district's total population has one form of disability or the other. The proportion of the male population with disability is slightly lower (2.0%) than females (2.1%). The types of disability in the district include sight, hearing, speech, physical, intellect, and emotion. Persons with sight disability recorded the highest of 35.0 percent followed by physical disability (31.4%). About 46.4 percent of the population with disability are in the urban localities. There are more females with hearing and physical disabilities while there are more males with sight and speech disabilities in the district. Of the population disabled, 56.4 percent have never been to school.

Agriculture

As high as 87.8 percent of households in the district are engaged in agriculture. In the rural localities, nine out of ten households (91.7%) are agricultural households while in the urban localities, 83.7 percent of households are into agriculture. Most households in the district (98.8%) are involved in crop farming. Poultry (chicken) is the dominant animal reared in the district.

Housing

The housing stock of Tain District is 12,283 representing 3.7 percent of the total number of houses in the Brong Ahafo Region. The average number of persons per house is 7.2.

Type, tenancy arrangement and ownership of dwelling units

About four in ten (44.1%) of all dwelling units in the district are compound houses; 37.2 percent are separate houses and 6.3 percent are semi-detached houses. More than half (59.5%) of the dwelling units in the district are owned by members of the household; 13.5 percent are owned by private individuals; 24.4 percent are owned by a relative who is not a member of the household and only 0.7 percent are owned by public or government. Less than one percent (0.8%) of the dwelling units is owned through mortgage schemes.

Material for construction of outer wall, floor and roof

The main construction material for outer walls of dwelling units in the district is mud/mud bricks or earth accounting for 59.0 percent with cement/concrete constituting 35.0 percent of outer walls of dwelling units in the district. Cement (65.5%) and mud/earth (33.0%) are the two main materials used in the construction of floors of dwelling units in the district. Metal sheets are the main roofing material (72.6 %) for dwelling units in the district, this is followed by thatch/palm leaf/raffia constituting 23.0 percent.

Room occupancy

One room constitutes the highest percentage (89.7%) of sleeping rooms occupied by households in housing units in the district. About 9.8 percent of households with 10 or more members occupy single rooms.

Utilities and household facilities

The three main sources of lighting in dwelling units in the district are electricity (46.6%), flashlight/torch (43.8%), and kerosene lamp (7.9%). The main source of fuel for cooking for most households in the district is wood (79.2%). The proportion for rural (85.3%) is higher than that of urban (72.8%). The four main sources of water in the district are borehole, river stream, public tap and pipe borne water. About half of households (57.2%) drink water from

boreholes, while the other 31.0 percent drink water from either public tap or pipe-borne outside dwelling .

The most common toilet facility used by households in the district is public toilet (WC, KVIP, Pit, Pan) representing 44.1 percent followed by pit latrine (18.7%). About 30.1 percent of the population in the district has no toilet facility. About two in ten of households (25.2%) in the district share separate bathrooms in the same house while 25.5 percent own bathrooms for their exclusive use.

Waste disposal

The most widely used method of solid waste disposal is by public dump in the open space accounting for 72.2 percent. About one in ten households (11.8%) dump their solid waste indiscriminately. House to house waste collection accounts for 0.8 percent. For liquid waste disposal, throwing waste onto the compound (45.4%) and onto the street (48.7%) are the two most common methods used by households in the district.

CHAPTER ONE

INTRODUCTION

1.1 Background

This chapter gives brief information on the physical features, political and administrative structure, cultural and social structure and the economy of the Tain District Assembly.

The Tain District Assembly is one of the twenty-seven (27) Municipalities/Districts in the Brong Ahafo Region of the Republic of Ghana. As far back as 1969, the Government of Ghana recognized that the “Population of Ghana is the nation’s greatest resource. It is both the instrument and objective of national development. The protection and enhancement of its welfare is the Government’s first responsibility”. (Government of Ghana, 1969) Government also explicitly recognized the reciprocal relationship between population and development (i.e. population affects development even as development affects population). In all these the population, its characteristics as well as skills levels are of primary importance because development is by people, for the benefit of people and of people. An understanding of the population, its characteristics and dynamics, is therefore crucial for realistic development planning.

The overall level of development and demographic structure of the country conceals differences between and within regions, districts, urban and rural localities. As such, there are bound to be differences in the population and development needs and priorities between and within regions, districts, urban and rural localities.

In order to accommodate district specific needs and priorities within the overall development aspirations, policies and priorities of the country, the Government of Ghana has operated the decentralized system of development since 1988 with the District Assembly, as the planning authority. The District Assembly is expected to initiate and coordinate the processes of planning, programming, budgeting and implementation of District plans, programmes and projects. The District Assemblies and the various organs are expected to carry out medium and long term planning including integration of population policies and issues, as they pertain to the needs of particular Districts and communities.

This report deals with the Tain District. Its objective is to make available to the general public, the District Assembly and its various organs, the analysis of the results of the 2010 Population and Housing Census and its full implication for policy and planning in the District.

1.2 Physical Features

The physical features capture the location and size, climatic condition and the vegetation of the district.

1.2.1 Location and Size

Tain is one of the districts established in August 2004 in Brong Ahafo Region by Legislative Instrument (L.I) 2090. The District was carved out of the Wenchi Municipal Assembly as a result of the growing population of the Municipal Assembly and to ensure that developmental projects reach every part of the district.

The District has Nsawkaw as its capital. It shares common boundaries with Wenchi Municipal to the East, Jaman North and Jaman South to the West, Sunyani West to the South and Berekum Municipal to the South West. It is also bounded by the Banda District to the North and La Cote d'Ivoire to the North West. The location of Tain District has helped boost economic trade as the District continues to engage in inter-district trade with the bounded districts. In terms of land area, Tain District covers 1,829.84960 km² representing 3.5 percent of the total land area of the Brong Ahafo Region. Since the District is an agrarian economy, it could take advantage of the vast arable land for agriculture purposes.

1.2.2 Climate

The temperature in the Tain District is generally high with an average of 24.5°C throughout the year. Average maximum temperature is 30.9°C and minimum of 21.2°C. The hottest period ranges from February to April.

Rainfall in the District is characterized by seasonality which is a limiting factor to agriculture. The district has two main seasons, that is, rainy and dry seasons.

The rainy season occurs between April and October with a short dry period in August. The average annual rainfall is about 1,140 – 1,270mm. The district experiences an average of 4 months of rainfall. However, rivers such as Tain and Nyimpene flow throughout the year which can be used for irrigation to support dry season farming. The high rainfall pattern in the District supports the cultivation of a variety of crops – cereals, tubers, and vegetables.

1.2.3 Vegetation

Moist semi-deciduous forest and the Guinea Savannah woodland are the two major vegetation zones found in the District. Major timber species like Odum, Sapele, Wawa and Mahogany can be found in these vegetation zones. The vegetation zones – guinea savannah and the semi-deciduous forest are suitable for the cultivation of crops and animal rearing.

The forest reserves and a few groves around the water bodies in the district help to protect the Nyimpene and the Tain water bodies. These facilitate the flow of the rivers all year round. These rivers are used for irrigation to enhance farming activities in the district. In addition, the existence of wildlife like deer and antelopes in the grove can serve as tourism potential for the District.

1.3 Political and Administrative Structure

The District Assembly is the highest administrative and political authority in the district (Local Government Act, 1993; Act 462). The Assembly exercises deliberative, administrative and executive functions in the district. It is responsible for the overall development of the district by way preparing and implementing developmental plan and related budget. The District Chief Executive is the political head of the District.

The District Assembly is divided into Town and Area Councils, depending on the population and land area of the district. An Area Council is made up of two (2) or more towns with a population of 5,000 or more. In view of this the district has one Town Council and five Area Councils. The district has one constituency with 29 electoral areas.

Figure 1.1: District Map of Tain



Source: Ghana Statistical Service, GIS

1.4 Social and Cultural Structure

The district is quite heterogeneous with the Akan forming the majority ethnic group, followed by the Mole-Dagbani. The other ethnic groups in the district are Guans, Ewes, and Dagartis among others.

In terms of the traditional set up, there are four (4) paramount areas in the District namely, Nsawkaw, Seikwa, Badu and Debibi/Menji Zone.

The main celebrated festivals in the District are Krufie by the people of Nsawkaw, Tano Yam Festival by the people of Seikwa and Gbono by the people of Debibi and its environs. These festivals attract more people from various parts of the country. During these occasions, funds are raised to undertake developmental projects.

In terms of religious composition, Christians, Muslims and African Traditionalists are found in the District. Christians form the largest religion in the district followed by Islam.

1.5 Economy

Tain District is richly endowed with natural resources, particularly tourist attraction sites, mineral deposits and forests.

1.5.1 Major economic activities

Majority of the people in the District are engaged in farming. The rest of the population is engaged in other services like carpentry, trading, teaching, masonry, weaving, tailoring, and craftsmanship.

The major occupation which is farming depends mainly on rainfall. Degegede is the only community with access to furrow type of irrigation covering 10 acres of land. Most people cultivate 0.49 hector of land on subsistence basis (District Progress Report, MoFA 2013) with regards to agro-industries, much attention is given to cassava processing and cashew nut production.

1.5.2 Financial institutions

National Investment Bank, Baduman Rural Bank, Nkoranman Rural Bank, BACCSOD and Berekum Teachers' Credit Union are the financial institutions operating in the District. These institutions give support in terms of credit facilities to most of the micro and small- scale enterprises to help them grow and expand their businesses.

1.5.3 Mining

Nature has blessed the district with gold and sand deposits in abundance. Potential investors who are into sand winning and gold mining could also explore these areas in the district. There is the existence of Birrim Goldfields Company in the district and they are into exploration of more gold sites.

1.5.4 Tourism

Some of the tourist sites identified in the district include Archaeological site at Hani, an Ancient Cave Site at Begho (Nsesrekeseso), Twuntwu Chain Mountains, an ancient settlement at Minamanfo, Adawiaso (River Tain), an ancient site at Apayeso, Prego Ancient

Remains, Menji Crocodile Pond and Degedege Irrigation Dam. None of these tourist sites has been developed yet and this when developed, can generate a lot of revenue for the District.

1.5.5 Social amenities/infrastructure

The District has 91 public and 19 private schools including kindergarten and four senior high schools. These schools are fairly distributed district- wide, with the rural areas having about 60 percent of the total number of schools.

With regards to health, there is one District Hospital in Nsawkaw, seven health centres and two Community Based Planning and Health Service (CHPS) Compounds located at Hani and Dagadu communities.

A total of 59 communities have been connected to the national electricity grid; the number of households connected to electricity is 40,113 (Annual Progress Report-2013, Tain District Assembly).

1.5.6 Road Network

Roads are a very important means of transport and form an integral part of any process towards the meaningful development of a people. Where there are roads, commerce, social activities and any form of human endeavour thrives as both people and goods are carried to various destinations

The total length of road networks is 1049km. Out of this 51km is tarred and the remaining is untarred. Most of the tarred roads lead to the urban communities (Annual Progress Report-2013, Tain District Assembly). The trunk and feeder roads that linkup the various communities are in bad conditions and almost unmotorable especially during the rainy season.

1.6 Census Methodology, Concepts and Definitions

1.6.1 Introduction

Ghana Statistical Service (GSS) was guided by the principle of international comparability and the need to obtain accurate information in the 2010 Population and Housing Census (2010 PHC). The Census was, therefore, conducted using all the essential features of a modern census as contained in the United Nations Principles and Recommendations for countries taking part in the 2010 Round of Population and Housing Censuses.

Experience from previous post independence censuses of Ghana (1960, 1970, 1984 and 2000) was taken into consideration in developing the methodologies for conducting the 2010 PHC. The primary objective of the 2010 PHC was to provide information on the number, distribution and social, economic and demographic characteristics of the population of Ghana necessary to facilitate the socio-economic development of the country.

1.6.2 Pre-enumeration activities

Development of census project document and work plans

A large scale statistical operation, such as the 2010 Population and Housing Census required meticulous planning for its successful implementation. A working group of the Ghana Statistical Service prepared the census project document with the assistance of two consultants. The document contains the rationale and objectives of the census, census

organisation, a work plan as well as a budget. The project document was launched in November 2008 as part of the Ghana Statistics Development Plan (GSDP) and reviewed in November 2009.

Census secretariat and committees

A well-structured management and supervisory framework that outlines the responsibilities of the various stakeholders is essential for the effective implementation of a population and housing census. To implement the 2010 PHC, a National Census Secretariat was set up in January 2008 and comprised professional and technical staff of GSS as well as staff of other Ministries, Departments and Agencies (MDAs) seconded to GSS. The Census Secretariat was primarily responsible for the day-to-day planning and implementation of the census activities. The Secretariat had seven units, namely; census administration, cartography, recruitment and training, publicity and education, field operations and logistics management, data processing, and data analysis and dissemination.

The Census Secretariat was initially headed by an acting Census Coordinator engaged by the United Nations Population Fund (UNFPA) in 2008 to support GSS in the planning of the Census. In 2009, the Census Secretariat was re-organised with the Government Statistician as the National Chief Census Officer and overall Coordinator, assisted by a Census Management Team and a Census Coordinating Team. The Census Management Team had oversight responsibility for the implementation of the Census. It also had the responsibility of taking critical decisions on the census in consultation with other national committees. The Census Coordinating Team, on the other hand, was responsible for the day-to-day implementation of the Census programme.

A number of census committees were also set up at both national and sub-national levels to provide guidance and assistance with respect to resource mobilization and technical advice. At the national level, the committees were the National Census Steering Committee (NCSC), the National Census Technical Advisory Committee (NCTAC) and the National Census Publicity and Education Committee (NCPEC). At the regional and district levels, the committees were the Regional Census Implementation Committee and the District Census Implementation Committee, respectively.

The Regional and District Census Implementation Committees were inter-sectoral in their composition. Members of the Committees were mainly from decentralized departments with the Regional and District Coordinating Directors chairing the Regional Census Implementation Committee and District Census Implementation Committee, respectively. The Committees contributed to the planning of district, community and locality level activities in areas of publicity and field operations. They supported the Regional and District Census Officers in the recruitment and training of field personnel (enumerators and supervisors), as well as mobilizing logistical support for the census.

Selection of census topics

The topics selected for the 2010 Population and Housing Census were based on recommendations contained in the UN Principles and Recommendations for 2010 Round of Population and Housing Censuses and the African Addendum to that document as well as the needs of data users. All the core topics recommended at the global level, i.e., geographical and internal migration characteristics, international migration, household characteristics, demographic and social characteristics such as age, date of birth, sex, and marital status, fertility and mortality, educational and economic characteristics, issues relating to disability and housing conditions and amenities were included in the census.

Some topics that were not considered core by the UN recommendations but which were found to be of great interest and importance to Ghana and were, therefore, included in the 2010 PHC are religion, ethnicity, employment sector and place of work, agricultural activity, as well as housing topics, such as, type of dwelling, materials for outer wall, floor and roof, tenure/holding arrangement, number of sleeping rooms, cooking fuel, cooking space and Information Communication Technology (ICT).

Census mapping

A timely and well implemented census mapping is pivotal to the success of any population and housing census. Mapping delineates the country into enumeration areas to facilitate smooth enumeration of the population. The updating of the 2000 Census Enumeration Area (EA) maps started in the last quarter of 2007 with the acquisition of topographic sheets of all indices from the Survey and Mapping Division of the Lands Commission. In addition, digital sheets were also procured for the Geographical Information System Unit.

The Cartography Unit of the Census Secretariat collaborated with the Survey and Mapping Division of the Lands Commission and the Centre for Remote Sensing and Geographic Information Services (CERSGIS) of the Department of Geography and Resource Development, University of Ghana, to determine the viability of migrating from analog to digital mapping for the 2010 PHC, as recommended in the 2000 PHC Administrative Report. Field cartographic work started in March 2008 and was completed in February 2010.

Development of questionnaire and manuals

For effective data collection, there is the need to design appropriate documents to solicit the required information from respondents. GSS consulted widely with main data users in the process of the questionnaire development. Data users including MDAs, research institutions, civil society organisations and development partners were given the opportunity to indicate the type of questions they wanted to be included in the census questionnaire.

Documents developed for the census included the questionnaire and manuals, and field operation documents. The field operation documents included Enumerator's Visitation Record Book, Supervisor's Record Book, and other operational control forms. These record books served as operational and quality control tools to assist enumerators and supervisors to control and monitor their field duties respectively.

Pre-tests and trial census

It is internationally recognized that an essential element in census planning is the pre-testing of the questionnaire and related instructions. The objective of the pre-test is to test the questionnaire, the definition of its concepts and the instructions for filling out the questionnaire.

The census questionnaire was pre-tested twice in the course of its development. The first pre-test was carried out in March 2009 to find out the suitability of the questions and the instructions provided. It also tested the adequacy and completeness of the responses and how respondents understood the questions. The second pre-test was done in 10 selected enumeration areas in August, 2009. The objective of the second pre-test was to examine the sequence of the questions, test the new questions, such as, date of birth and migration, and assess how the introduction of 'date of birth' could help to reduce 'age heaping'. With regard to questions on fertility, the pre-tests sought to find out the difference, if any, between proxy responses and responses by the respondents themselves. Both pre-tests were carried in the

Greater Accra Region. Experience from the pre-tests was used to improve the final census questionnaire.

A trial census which is a dress rehearsal of all the activities and procedures that are planned for the main census was carried out in October/November 2009. These included recruitment and training, distribution of census materials, administration of the questionnaire and other census forms, enumeration of the various categories of the population (household, institutional and floating population), and data processing. The trial census was held in six selected districts across the country namely; Saboba (Northern Region), Chereponi (Northern Region), Sene (Brong Ahafo Region), Bia (Western Region), Awutu Senya (Central Region), and Osu Klottey Sub-Metro (Greater Accra Region). A number of factors were considered in selecting the trial census districts. These included: administrative boundary issues, ecological zone, and accessibility, enumeration of floating population/outdoor-sleepers, fast growing areas, institutional population, and enumeration areas with scattered settlements.

The trial census provided GSS with an opportunity to assess its plans and procedures as well as the state of preparedness for the conduct of the 2010 PHC. The common errors found during editing of the completed questionnaires resulted in modifications to the census questionnaire, enumerator manuals and other documents. The results of the trial census assisted GSS to arrive at technically sound decisions on the ideal number of persons per questionnaire, number of persons in the household roster, migration questions, placement of the mortality question, serial numbering of houses/housing structures and method of collection of information on community facilities. Lessons learnt from the trial census also guided the planning of the recruitment process, the procedures for training of census field staff and the publicity and education interventions.

1.6.3 Census Enumeration

Method of enumeration and field work

All post- independence censuses (1960, 1970, 1984, and 2000) conducted in Ghana used the de facto method of enumeration where people are enumerated at where they were on census night and not where they usually reside. The same method was adopted for the 2010 PHC. The de facto count is preferred because it provides a simple and straight forward way of counting the population since it is based on a physical fact of presence and can hardly be misinterpreted. It is thought that the method also minimizes the risks of under-enumeration and over enumeration. The canvasser method, which involves trained field personnel visiting houses and households identified in their respective enumeration areas, was adopted for the 2010 PHC.

The main census enumeration involved the canvassing of all categories of the population by trained enumerators, using questionnaires prepared and tested during the pre-enumeration phase. Specific arrangements were made for the coverage of special population groups, such as the homeless and the floating population. The fieldwork began on 21st September 2010 with the identification of EA boundaries, listing of structures, enumeration of institutional population and floating population.

The week preceding the Census Night was used by field personnel to list houses and other structures in their enumeration areas. Enumerators were also mobilized to enumerate residents/inmates of institutions, such as, schools and prisons. They returned to the institutions during the enumeration period to reconcile the information they obtained from individuals and also to cross out names of those who were absent from the institutions on

Census Night. Out-door sleepers (floating population) were also enumerated on the Census Night.

Enumeration of the household population started on Monday, 27th September, 2010. Enumerators visited houses, compounds and structures in their enumeration areas and started enumerating all households including visitors who spent the Census Night in the households. Enumeration was carried out in the order in which houses/structures were listed and where the members of the household were absent, the enumerator left a call-back-card indicating when he/she would come back to enumerate the household. The enumeration process took off smoothly with enumerators poised on completing their assignments on schedule since many of them were teachers and had to return to school. However, many enumerators ran short of questionnaires after a few days' work.

Enumeration resumed in all districts when the questionnaire shortage was resolved and by 17th October, 2010, enumeration was completed in most districts. Enumerators who had finished their work were mobilized to assist in the enumeration of localities that were yet to be enumerated in some regional capitals and other fast growing areas. Flooded areas and other inaccessible localities were also enumerated after the end of the official enumeration period. Because some enumeration areas in fast growing cities and towns, such as, Accra Metropolitan Area, Kumasi, Ksoa and Techiman were not properly demarcated and some were characterized by large EAs, some enumerators were unable to complete their assigned tasks within the stipulated time.

1.6.4 Post enumeration survey

In line with United Nations recommendations, GSS conducted a Post Enumeration Survey (PES) in April, 2011 to check content and coverage error. The PES was also to serve as an important tool in providing feedback regarding operational matters such as concepts and procedures in order to help improve future census operations. The PES field work was carried out for 21 days in April 2011 and was closely monitored and supervised to ensure quality output. The main findings of the PES were that:

- 97.0 percent of all household residents who were in the country on Census Night (26th September, 2010) were enumerated.
- 1.3 percent of the population was erroneously included in the census.
- Regional differentials are observed. Upper East region recorded the highest coverage rate of 98.2 percent while the Volta region had the lowest coverage rate of 95.7 percent.
- Males (3.3%) were more likely than females (2.8%) to be omitted in the census. The coverage rate for males was 96.7 percent and the coverage rate for females was 97.2 percent. Also, the coverage rates (94.1%) for those within the 20-29 and 30-39 age groups are relatively lower compared to the coverage rates of the other age groups.
- There was a high rate of agreement between the 2010 PHC data and the PES data for sex (98.8%), marital status (94.6%), relationship to head of household (90.5%) and age (83.0%).

1.6.5 Release and dissemination of results

The provisional results of the census were released in February 2011 and the final results in May 2012. A National Analytical report, six thematic reports, a Census Atlas, 10 Regional

Reports and a report on Demographic, Social, Economic and Housing were prepared and disseminated in 2013.

1.6.6 Concepts and Definitions

Introduction

The 2010 Population and Housing Census of Ghana followed the essential concepts and definitions of a modern Population and Housing Census as recommended by the United Nations (UN). It is important that the concepts, definitions and recommendations are adhered to since they form the basis upon which Ghana could compare her data with that of other countries.

The concepts and definitions in this report cover all sections of the 2010 Population and Housing Census questionnaires (PHC1A and PHC1B). The sections were: geographical location of the population, Household and Non-household population, Literacy and Education, Emigration, Demographic and Economic Characteristics, Disability, Information and Communication Technology (ICT), Fertility, Mortality, Agricultural Activity and Housing Conditions.

The concepts and definitions are provided to facilitate understanding and use of the data presented in this report. Users are therefore advised to use the results of the census within the context of these concepts and definitions.

Region

There were ten (10) administrative regions in Ghana during the 2010 Population and Housing Census as they were in 1984 and 2000.

District

In 1988, Ghana changed from the local authority system of administration to the district assembly system. In that year, the then existing 140 local authorities were demarcated into 110 districts. In 2004, 28 new districts were created; this increased the number of districts in the country to 138. In 2008, 32 additional districts were created bringing the total number of districts to 170. The 2010 Population and Housing Census was conducted in these 170 administrative districts (these are made-up of 164 districts/municipals and 6 metropolitan areas). In 2012, 46 new districts were created to bring the total number of districts to 216. There was urgent need for data for the 46 newly created districts for planning and decision-making. To meet this demand, the 2010 Census data was re-programmed into 216 districts after carrying out additional fieldwork and consultations with stakeholders in the districts affected by the creation of the new districts.

Locality

A locality was defined as a distinct population cluster (also designated as inhabited place, populated centre, settlement) which has a NAME or LOCALLY RECOGNISED STATUS. It included fishing hamlets, mining camps, ranches, farms, market towns, villages, towns, cities and many other types of population clusters, which meet the above criteria. There were two main types of localities, rural and urban. As in previous censuses, the classification of localities into 'urban' and 'rural' was based on population size. Localities with 5,000 or more persons were classified as urban while localities with less than 5,000 persons were classified as rural.

Population

The 2010 Census was a “de facto” count and each person present in Ghana, irrespective of nationality, was enumerated at the place where he/she spent the midnight of 26th September 2010.

Household

A household was defined as a person or a group of persons, who lived together in the same house or compound and shared the same house-keeping arrangements. In general, a household consisted of a man, his wife, children and some other relatives or a house help who may be living with them. However, it is important to remember that members of a household are not necessarily related (by blood or marriage) because non-relatives (e.g. house helps) may form part of a household.

Head of Household

The household head was defined as a male or female member of the household recognised as such by the other household members. The head of household is generally the person who has economic and social responsibility for the household. All relationships are defined with reference to the head.

Household and Non-household population

Household population comprised of all persons who spent the census night in a household setting. All persons who did not spend the census night in a household setting (except otherwise stated) were classified as non-household population. Persons who spent census night in any of the under listed institutions and locations were classified as non-household population:

- (a) Educational Institutions
- (b) Children's and Old People's Homes
- (c) Hospitals and Healing Centres
- (d) Hotels
- (e) Prisons
- (f) Service Barracks
- (g) Soldiers on field exercise
- (h) Floating Population: The following are examples of persons in this category:
 - i. All persons who slept in lorry parks, markets, in front of stores and offices, public bathrooms, petrol filling stations, railway stations, verandas, pavements, and all such places which are not houses or compounds.
 - ii. Hunting and fishing camps.
 - iii. Beggars and vagrants (mentally sick or otherwise).

Age

The age of every person was recorded in completed years disregarding fractions of days and months. For those persons who did not know their birthdays, the enumerator estimated their ages using a list of district, regional and national historical events.

Nationality

Nationality is defined as the country to which a person belongs. A distinction is made between Ghanaians and other nationals. Ghanaian nationals are grouped into Ghanaian by birth, Ghanaian with dual nationality and Ghanaian by naturalization. Other nationals are grouped into ECOWAS nationals, Africans other than ECOWAS nationals, and non-Africans.

Ethnicity

Ethnicity refers to the ethnic group that a person belonged to. This information is collected only from Ghanaians by birth and Ghanaians with dual nationality. The classification of ethnic groups in Ghana is that officially provided by the Bureau of Ghana Languages and which has been in use since the 1960 census.

Birthplace

The birthplace of a person refers to the locality of usual residence of the mother at the time of birth. If after delivery a mother stayed outside her locality of usual residence for six months or more or had the intention of staying in the new place for six or more months, then the actual town/village of physical birth becomes the birthplace of the child.

Duration of Residence

Duration of residence refers to the number of years a person has lived in a particular place. This question is only asked of persons not born in the place where enumeration took place. Breaks in duration of residence lasting less than 12 months are disregarded. The duration of residence of persons who made multiple movements of one (1) year or more is assumed to be the number of years lived in the locality (town or village) since the last movement.

Religion

Religion refers to the individual's religious affiliation as reported by the respondent, irrespective of the religion of the household head or the head's spouse or the name of the person. No attempt was made to find out if respondents actually practiced the faith they professed.

Marital Status

Marital status refers to the respondent's marital status as at Census Night. The question on marital status was asked only of persons 12 years and older. The selection of the age limit of 12 years was based on the average age at menarche and also on the practice in some parts of the country where girls as young as 12 years old could be given in marriage.

Literacy

The question on literacy referred to the respondent's ability to read and write in any language. A person was considered literate if he/she could read and write a simple statement with understanding. The question on literacy was asked only of persons 11 years and older.

Education

School Attendance

Data was collected on school attendance for all persons three (3) years and older. School attendance refers to whether a person has ever attended, was currently attending or has never attended school. In the census, school meant an educational institution where a person received at least four hours of formal education.

Although the lower age limit of formal education is six years for primary one, eligibility for the school attendance question was lowered to three years because pre-school education has become an important phenomenon in the country.

Level of education

Level of education refers to the highest level of formal school that a person ever attended or was attending. This information was obtained for persons 3 years and older.

Activity status

Activity status refers to economic or non-economic activity of respondents during the 7 days preceding census night. Information on type of activity was collected on persons 5 years and older. A person was regarded as economically active if he/she:

- a. Worked for pay or profit or family gain for at least 1 hour within the 7 days preceding Census Night. This included persons who were in paid employment or self-employment or contributing family workers.
- b. Did not work, but had jobs to return to.
- c. Were unemployed.

The economically not active were persons who did not work and were not seeking for work. They were classified by reasons for not being economically active. Economically not active persons included homemakers, students, retired persons, the disabled and persons who were unable to work due to their age or ill-health.

Occupation

This referred to the type of work the person was engaged in at the establishment where he/she worked. This was asked only of persons 5 years and older who worked 7 days before the census night, and those who did not work but had a job to return to as well as those unemployed who had worked before. All persons who worked during the 7 days before the census night were classified by the kind of work they were engaged in. The emphasis was on the work the person did during the reference period and not what he/she was trained to do. For those who did not work but had a job to return to, their occupation was the job they would go back to after the period of absence. Also, for persons who had worked before and were seeking for work and available for work, their occupation was on the last work they did before becoming unemployed. If a person was engaged in more than one occupation, only the main one was considered.

Industry

Industry referred to the type of product produced or service rendered at the respondent's work place. Information was collected only on the main product produced or service rendered in the establishment during the reference period.

Employment status

Employment status refers to the status of a person in the establishment where he/she currently works or previously worked. Eight employment status categories were provided: employee, self-employed without employees, self-employed with employees, casual worker, contributing family worker, apprentice, domestic employee (house help). Persons who could not be classified under any of the above categories were classified as “other”.

Employment sector

This refers to the sector in which a person worked. The employment sectors covered in the census were public, private formal, private informal, semi-public/parastatal, NGOs and international organizations.

Disability

Persons with disability were defined as those who were unable to or were restricted in the performance of specific tasks/activities due to loss of function of some part of the body as a result of impairment or malformation. Information was collected on persons with visual/sight impairment, hearing impairment, mental retardation, emotional or behavioural disorders and other physical challenges.

Information Communication Technology (ICT)

ICT questions were asked for both individuals and households. Persons having mobile phones refer to respondents 12 years and older who owned mobile phones (irrespective of the number of mobile phones owned by each person). Persons using internet facility refers to those who had access to internet facility at home, internet cafe, on mobile phone or other mobile device. Internet access is assumed to be not only via computer, but also by mobile phones, PDA, game machine and digital television.

Households having Personal Computers/Laptops refer to households who own desktops/laptop computers. The fixed telephone line refers to a telephone line connecting a customer’s terminal equipment (e.g. telephone set, facsimile machine) to the public switch telephone network.

Fertility

Two types of fertility data were collected: lifetime fertility and current fertility. Lifetime fertility refers to the total number of live births that females 12 years and older had ever had during their life time. Current fertility refers to the number of live births that females 12-54 years old had in the 12 months preceding the Census Night.

Mortality

Mortality refers to all deaths that occurred in the household during the 12 months preceding the Census Night. The report presents information on deaths due to accidents, violence, homicide and suicide. In addition, data were collected on pregnancy-related deaths of females 12-54 years.

Agriculture

The census sought information on household members who are engaged in agricultural activities, including the cultivation of crops or tree planting, rearing of livestock or breeding of fish for sale or family consumption. Information was also collected on their farms, types of crops and number and type of livestock.

Housing Conditions and Facilities

The UN recommended definition of a house as “a structurally separate and independent place of abode such that a person or group of persons can isolate themselves from the hazards of climate such as storms and the sun” was adopted. The definition, therefore, covered any type of shelter used as living quarters, such as separate houses, semi-detached houses, flats/apartments, compound houses, huts, tents, kiosks and containers.

Living quarters or dwelling units refer to a specific area or space occupied by a particular household and therefore need not necessarily be the same as the house of which the dwelling unit may be a part.

Information collected on housing conditions included the type of dwelling unit, main construction materials for walls, floor and roof, holding/tenure arrangement, ownership type, type of lighting, source of water supply and toilet facilities. Data was also collected on method of disposal of solid and liquid waste.

1.7 Organization of the Report

The report consists of nine chapters. Chapter one provides basic information about the district. It gives a brief background of the district, describing its physical features, political and administrative structure, social and cultural structure, economy and the census methodology and concepts used in the report. Chapter two discusses the population size, composition and age structure. It further discusses the migratory pattern in the district as well as fertility and mortality.

In chapter three, the focus is on household size, composition and headship as well as the marital characteristics and nationality of the inhabitants of the district. The chapter also discusses the religious affiliations and the educational statuses of the members of the district. Chapter four focuses on economic characteristics such as economic activity status, occupation, industries and the employment status and sectors that the people are employed.

Information Communication Technology (ICT) is discussed in chapter five. It analyses mobile phone ownership, internet use and ownership of desktop/laptop computers while chapter six is devoted to Persons living with disabilities (PWDs) and their socio-demographic characteristics. Chapter seven concentrates on the agricultural activities of the households, describing the types of farming activities, livestock rearing and numbers of livestock reared.

In chapter eight, housing conditions such as housing stock, type of dwelling and construction materials, room occupancy, holding and tenancy, lighting and cooking facilities, bathing and toilet facilities, waste disposal and source of water for drinking or for other domestic use in the district are discussed and analyzed in detail. The final chapter, Chapter nine presents the summary of findings and conclusions.

CHAPTER TWO

DEMOGRAPHIC CHARACTERISTICS

2.1 Introduction

The district's population in terms of its numbers, age structure and sex distribution reflects on indicators such as growth rate, doubling time, labour force and dependency ratio. Changes in any population are brought about through the dynamics of fertility, mortality and migration.

This chapter therefore provides information on the population size of the district, the sex and age structure and dependency ratios as well as the migratory pattern within the district. Population distribution by rural-urban residence is also discussed in addition to fertility and mortality.

2.2 Population Size and Distribution

Table 2.1 presents the distribution of population by age, sex and type of locality. The total population of Tain is 88,104 representing 3.8 percent of the regional population of 2,310,983. The distribution of the population by sex shows that there are more females (44,596 or 50.6%) than males (43,508 or 49.4%) residing in the district. In terms of density, with a land surface area of 1,829.84960 square kilometres and a population size of 88,104, the population density of the district is 48.1 persons per square kilometre.

Localities with population 5,000 or more are classified as urban. On the basis of this classification, urban communities constitute the largest proportion (45,367 or 51.5%) with the rural population being (42,737 or 48.5%).

With regards to the various age cohorts, the 5-9 years age group has the highest population of (12,150 or 13.8%) while the age group 0-4 years has the second highest population of (11,899 or 13.5%). The age group with the least population (769) is 85+years.

Despite the fact that overall, more people reside in the urban areas than in the rural communities, the age groups 0-4 years, 5-9 years, 40-44 years and 45-49 years show a different picture of more people in these age groups in the rural areas.

Table 2.1: Population by age, sex and type of locality

Age Group	Sex			Sex ratio	Type of locality	
	Both Sexes	Male	Female		Urban	Rural
All	88,104	43,508	44,596	97.6	45,367	42,737
0 - 4	11,899	5,931	5,968	99.4	5,380	6,519
9-May	12,150	6,174	5,976	103.3	5,916	6,234
14-Oct	11,453	5,871	5,582	105.2	6,092	5,361
15 - 19	9,557	5,141	4,416	116.4	5,354	4,203
20 - 24	7,379	3,591	3,788	94.8	4,113	3,266
25 - 29	6,611	3,089	3,522	87.7	3,543	3,068
30 - 34	5,603	2,600	3,003	86.6	2,866	2,737
35 - 39	4,743	2,357	2,386	98.8	2,333	2,410
40 - 44	3,966	1,968	1,998	98.5	1,920	2,046
45 - 49	3,142	1,563	1,579	99	1,562	1,580
50 - 54	2,919	1,371	1,548	88.6	1,487	1,432
55 - 59	1,897	993	904	109.8	984	913
60 - 64	1,689	825	864	95.5	894	795
65 - 69	1,028	495	533	92.9	576	452
70 - 74	1,414	547	867	63.1	768	646
75 - 79	1,042	368	674	54.6	616	426
80 - 84	843	336	507	66.3	517	326
85+	769	288	481	60	446	323
All Ages	88,104	43,508	44,596	97.6	45,367	42,737
0-14	35,502	17,976	17,526	102.6	17,388	18,114
15-64	47,506	23,498	24,008	97.9	25,056	22,450
65+	5,096	2,034	3,062	66.4	2,923	2,173
Age-dependency ratio	85.5	85.2	85.8		81.1	90.4

Source: Ghana Statistical Service, 2010 Population and Housing Census

2.3 Age-Sex Structure

The age structure and the sex composition of the population of the district follow the regional and the national pattern. The age structure is broad at the base and reduces gradually in the subsequent age groups until the population becomes relatively small at the top.

2.3.1 Age and sex structure

Table 2.1 provides information on the age and sex composition by five years age groups for the district. In addition to the absolute numbers, the table provides derived useful information for report users. For example, the table shows that, the age-based dependent population (the dependent population 0-14 and 65 years and older divided by the population) is about forty six percent (46.1%) of the total population of the district.

Percentages computed from table 2.1 shows a relatively large proportion of children (13.5%) below five years. The population below 15 years (0-14) is 40.3 percent. The population in age group 15-19 comprises 10.9 percent of the total population.

In relation to the sex structure, there are more males (50.6%) than females (49.4%) who are under 15 years in the district.

The urban-rural distribution according to age follows a similar pattern as the sex structure. A large proportion of rural (51.0%) than urban (49.0%) dwellers are under age 15 years (0-14).

In terms of the population (15-64 years) by urban-rural distribution, there are equally higher percentages of the population falling within that category. That is, urban (52.7%) and rural (47.3%).

2.3.2 Sex ratio

The sex ratio is defined as the number of males per 100 females. The sex ratio at birth for most countries is about 105 or 106 males per 100 females. After birth, sex ratio varies because of different patterns of mortality and migration for males and females within the population. Sex ratios that are higher than 100 indicate that there are more males than females.

Table 2.1 also shows that the overall sex ratio is 97.6, implying that for every 100 females in the district, there are almost 98 males. The sex-ratio is highest (116.4) for 15-19 year age category and least (54.6) for 75-79 year age category.

2.3.3 Age dependency ratio

The age-dependency ratio is the ratio of people in the “dependent” ages (those under age 15 and ages 65 years and older) to those in the “economically productive” ages (15 to 64 years) in a population¹.

The age-dependency ratio is often used as an indicator of the economic burden the productive portion of a population must carry. Countries with very high birth rates usually have the highest age-dependency ratios because of the large proportion of children in the population². The age dependency ratio is a theoretical construct because many of the population 15-19 years for example are dependent because they are in school. Equally, not all persons 65 years and older are dependent as can be demonstrated from the aged farmers, fishermen and artisans in the district. Table 2.1 shows that Tain district has an age dependency ratio of 85.5 implying that, for every 100 persons in the working age group, 85 persons depend on them. It can also be observed that the male age dependency ratio of 85.2 is slightly lower than the female age dependency ratio which is 85.7. The total age-dependency ratio for rural areas (90.4) is higher than that of urban (81.1).

Child dependency ratio (population under five years divided by population 15-64 years) for the district is 74.7 but varies in proportion (76.5%) for males than for females (73.0%). The old age dependency ratio (population of 65+ years divided by population 15-64 years) is 10.7 which is again different proportions for males (8.6%) and for females (12.7%).

2.3.4 Population pyramid

A population pyramid is a graphical representation of the age-sex composition of a population and its shape is influenced by the levels of fertility, mortality, migration and coverage and content errors such as digit preference and exaggeration of age. The broadness of the base is determined by the level of fertility, while the shape is determined by mortality and to some extent migration³. The sizes of various age groups are represented by bars and a longer bar in a pyramid indicates more people in an age group while a shorter bar indicates fewer people. Generally, a pyramid shows a pattern of declines in the length of bars of each successive age group with advancing age.

¹ Population Reference Bureau’s Population Handbook, 2011

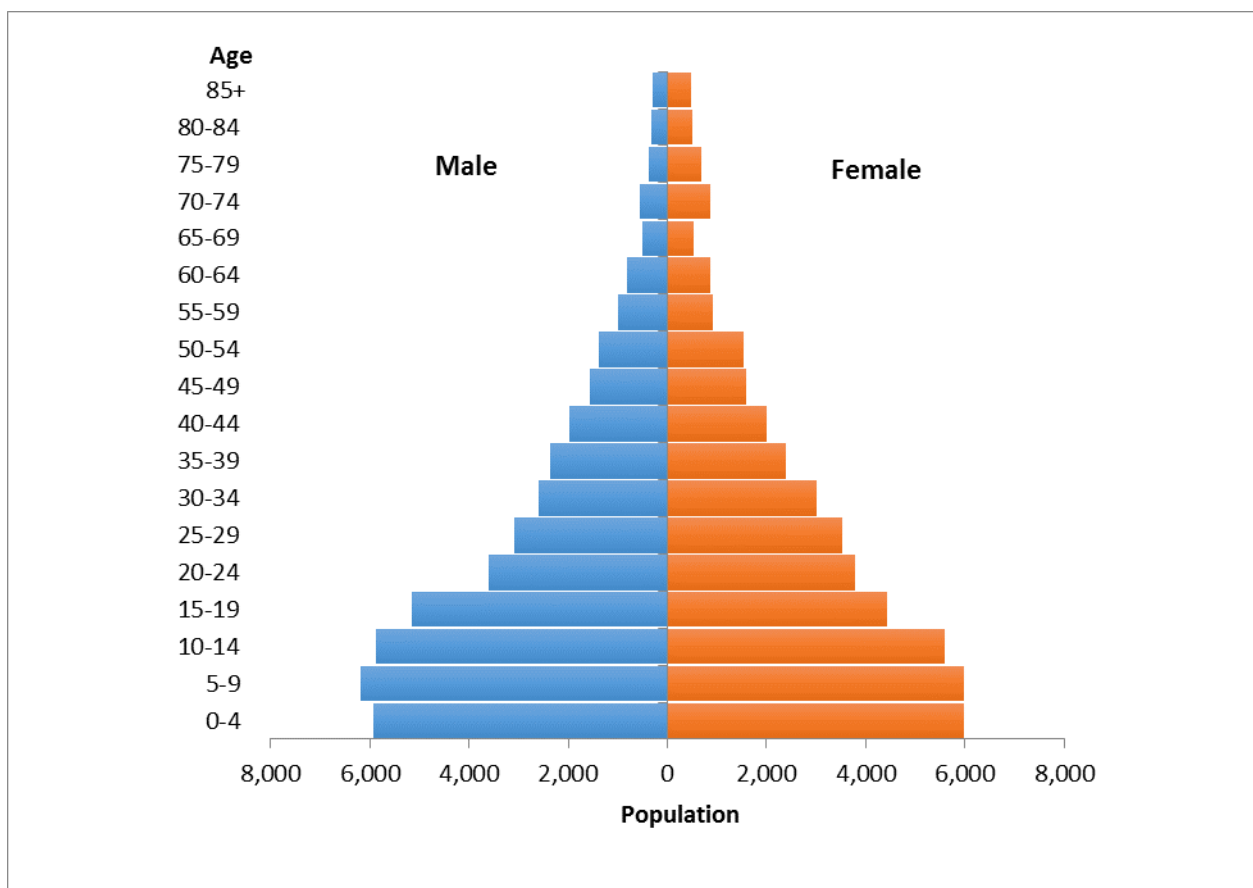
² Population Reference Bureau’s Population Handbook, 2011

³ National Population council. Fact sheet No V on Population and Urbanization. September 2007.

The age-sex structure is graphically represented by the pyramid in Figure 2.1. In general, the population pyramid reflects a broad-base pattern, characteristic of a developing nation with over half of its population for both males (41.7%) and females (38.1%) being young and under 15 years of age. This type of age structure has a built-in momentum for the growth of the district's population. When the young population eventually reaches reproductive age, the result will be a high population growth rate for some years to come. However, if the socio-economic potentials of the youth are properly harnessed and directed, with appropriate natural and human development policies and strategies in the fields of quality education and entrepreneurial training aimed at exploring for and exploiting natural resources, the youth can contribute significantly to the development of the district and the nation as a whole.

The pyramid generally shows the expected pattern of declines in the length of the bars for each group with advancing age. However, some ages do not follow this expected pattern. For instance, the bars for males in the age group 0-4 are shorter than those for males 5-9 years and 65-69 also shorter than 70-74 years for both males and females indicating the likelihood of errors in the age/sex data.

Figure 2.1: Population pyramid



Source: Ghana Statistical Service, 2010 Population and Housing Census

2.4 Fertility, Mortality and Migration

The main components of population change in any population and therefore in the Tain District are fertility, mortality and migration. This section takes a look at these dynamics of population change in the district.

2.4.1 Fertility

Fertility is one of the most important components of demographic change. It is the frequency of childbearing among women aged 15-49 years. Fertility rates measure the relative frequency with which births occur among women in reproductive age.

The Total Fertility Rate (TFR) is the average number of children that would be born to a woman by the time she completes childbearing if she were to experience the prevailing age-specific fertility rate. There are other fertility measures such as Crude Birth Rate (CBR), General Fertility Rate (GFR) among others.

The crude birth rate (CBR) is the simplest and most frequently used measure of fertility. It is easy to calculate because it requires only the total number of births and the total population. It is crude and always expressed per 1000 population. It is crude because it includes all ages and both sexes in the denominator. There is no attempt to relate the births to the women at risk of having those births. Because of this it is not a good measure of fertility at all.

The General Fertility Rate (GFR) expresses births relative to the number of women in the reproductive age. More data are required to calculate the GFR than the CBR because one has to know the age and sex composition of the population. The GFR is affected by age structure since there may be substantial variations between populations within the reproductive age range.

The TFR on the other hand, is a measure of fertility that is most widely used by demographers. It is calculated by adding up the age specific fertility rates (ASFR) and is always expressed as per one woman. It is a single figure measure that is independent of age structure.

Table 2.2 shows total fertility rate, general fertility rate and crude fertility rate in the Brong Ahafo Region and Tain district. The total fertility rate for Tain district is 3.5 births per woman which is almost the same as that of the region (3.6). It means that women in Tain would on the average bear 3.5 children each during their childbearing years.

The general fertility rate which is the number of live births per 1000 women between the ages 15-49 in a given year is 103.4 live births per 1,000 women in the district compared to the Regional figure of 105.9 live births per 1,000 women.

The crude birth rate, which is the number of live births per 1,000 populations, is 24.3 for the district which is slightly lower than the Regional crude birth rate of 26.3.

Table 2.2: Reported total fertility rate, general fertility rate and crude birth rate by district

District	Population	Number of women 15-49 years	Number of births in last 12 months	Total Fertility Rate	*General Fertility Rate	**Crude Birth Rate
All Districts	2,310,983	572,813	60,685	3.6	105.9	26.3
Asunafo South	95,580	22,115	2,706	4.0	122.4	28.3
Asunafo North Municipal	124,685	30,007	3,452	3.9	115.0	27.7
Asutifi North	52,259	12,681	1,606	4.3	126.6	30.7
Dormaa Municipal	112,111	29,337	2,816	3.3	96.0	25.1
Dormaa Central Municipal	50,871	12,773	1,424	3.7	111.5	28.0
Tano South	78,129	18,766	2,257	4.0	120.3	28.9
Tano North	79,973	19,493	2,063	3.6	105.8	25.8
Sunyani Municipal	123,224	36,146	2,644	2.6	73.1	21.5
Sunyani West	85,272	22,452	2,150	3.2	95.8	25.2
Berekum Municipal	129,628	36,119	3,001	2.8	83.1	23.2
Jaman South	92,649	23,759	2,314	3.3	97.4	25.0
Jaman North	83,059	20,640	1,747	3.0	84.6	21.0
Tain	88,104	20,692	2,139	3.5	103.4	24.3
Wenchi Municipal	89,739	22,028	2,188	3.4	99.3	24.4
Techiman Municipal	147,788	39,718	4,079	3.5	102.7	27.6
Nkoranza South	100,929	24,772	3,000	4.0	121.1	29.7
Nkoranza North	65,895	14,779	1,915	4.4	129.6	29.1
Atebubu Amantin	105,938	24,760	2,940	4.0	118.7	27.8
Sene West	57,734	13,378	1,446	3.7	108.1	25.0
Pru	129,248	30,261	2,981	3.4	98.5	23.1
Kintampo South	81,000	17,893	2,367	4.5	132.3	29.2
Kintampo North Municipal	95,480	23,040	2,652	3.9	115.1	27.8
Asutifi South	53,584	12,657	1,360	3.6	107.5	25.4
Dormaa West	47,678	11,282	1,487	4.5	131.8	31.2
Techiman North	59,068	15,421	1,619	3.5	105.0	27.4
Banda	20,282	4,402	474	3.7	107.7	23.4
Sene East	61,076	13,442	1,858	4.6	138.2	30.4

Source: Ghana Statistical Service, 2010 Population and Housing Census

2.4.2 Children ever born and children surviving

The 2010 Population and Housing Census collected information about children ever born and children surviving (either living with the mother or elsewhere) by women 12 years and older.

Table 2.3 presents the distribution of female population 12 years and older by age, children ever born, children surviving and sex of child. The total number of females 12 years and older in the district is 30,078. As shown by the table, the total number of children ever born in the district is 94,374 whereas 77,886 of them are still surviving. This means that about four in every five children (82.5%) born, survive in the district. This is higher than the national figure of 81.9 percent. Women 12-14 years form 10.2 percent of the female population 12 years and older. Child bearing among this group is highly associated with the risk of death of both the mother and child. The child survival rate of 60.0 percent among children of these young mothers is the lowest affirming the assertion that child bearing among this group of women is highly associated with risk. The survival rate of children of mothers 60 years and older is the second lowest (72.6%) in the district.

The low survival rate of children of mothers for the age group 60 years and older may be due to the natural tendency that since most of them may have been born long time ago, they have been exposed to the risk of dying for the longest period. Also, most of the children of aged mothers may have been born during periods when maternal and child health services are least available.

The relatively high levels of child survivor rate in the district may be the result of improvements in health facilities and health care deliveries such as the eradication of polio and other killer diseases among children in the district.

In terms of variations by sex of child, table 2.3 supports the general observation that in most populations, more female children survive than males. The table shows that, for all age groups of mothers, more female than male children survive.

Table 2.3: Female population 12 years and older by age, children ever born, children surviving and sex of child

Age	Number of Females	Children Ever Born				Children Surviving					
		Both sexes		Male	Female	Both sexes		Male		Female	
		Number	Percent			Number	Percent	Number	Percent		
Total	30,078	94,374	47,320	47,054	77,886	82.5	38,828	82.1	39,058	83.0	
12 - 14	3,058	10	4	6	6	60.0	1	25.0	5	83.3	
15 - 19	4,412	545	293	252	480	88.1	252	86.0	228	90.5	
20 - 24	3,775	3,117	1,535	1,582	2,757	88.5	1,302	84.8	1,455	92.0	
25 - 29	3,515	6,683	3,367	3,316	6,047	90.5	2,997	89.0	3,050	92.0	
30 - 34	2,996	9,409	4,661	4,748	8,514	90.5	4,209	90.3	4,305	90.7	
35 - 39	2,383	10,364	5,274	5,090	9,251	89.3	4,659	88.3	4,592	90.2	
40 - 44	2,001	10,597	5,441	5,156	9,254	87.3	4,754	87.4	4,500	87.3	
45 - 49	1,582	9,366	4,677	4,689	7,963	85.0	3,972	84.9	3,991	85.1	
50 - 54	1,543	9,877	4,889	4,988	8,208	83.1	4,056	83.0	4,152	83.2	
55 - 59	898	6,036	3,130	2,906	4,819	79.8	2,462	78.7	2,357	81.1	
60 +	3,915	28,370	14,049	14,321	20,587	72.6	10,164	72.3	10,423	72.8	

Source: Ghana Statistical Service, 2010 Population and Housing Census

2.4.3 Mortality

Mortality refers to all deaths that occurred in the household during the 12 months preceding the Census Night. Mortality data is useful in assessing the overall health of the population of a district, region or country. Mortality statistics provide baseline indicators from which health profiles can be constructed and health policies formulated. Infant and childhood mortality is highly sensitive to the socio-economic changes in the district. Therefore, studying levels of mortality provides an indirect measure of the welfare of a given population. The mortality indicators (Infant Mortality Rate, Maternal Mortality Rate, and Life Expectancy at Birth and under five Mortality Rate) are part of those indicators being monitored by the MDGs. (Millennium Development Goals)

Table 2.4 presents total Population, deaths in households and crude death rate in Tain District and Brong Ahafo Region. Out of the total population of 88,104, the district recorded 566 household deaths and this comparatively represents 4.0 percent of the total household deaths in the Region. In terms of crude death rate, the district recorded 6.4 deaths per 1000 population. This is about the same as the regional figure of 6.1.

Table 2.4: Total Population, deaths in households and crude death rate, by district

District	Total Population	Deaths in households	*Crude death rate
All	2,310,983	14,189	6.1
Asunafo South	95,580	472	4.9
Asunafo North Municipal	124,685	626	5
Asutifi North	52,259	458	8.8
Dormaa Municipal	112,111	782	7
Dormaa Central Municipal	50,871	399	7.8
Tano South	78,129	542	6.9
Tano North	79,973	475	5.9
Sunyani Municipal	123,224	455	3.7
Sunyani West	85,272	462	5.4
Berekum Municipal	129,628	858	6.6
Jaman South	92,649	514	5.5
Jaman North	83,059	627	7.5
Tain	88,104	566	6.4
Wenchi Municipal	89,739	704	7.8
Techiman Municipal	147,788	854	5.8
Nkoranza South	100,929	703	7
Nkoranza North	65,895	637	9.7
Atebubu Amantin	105,938	625	5.9
Sene West	57,734	344	6
Pru	129,248	351	2.7
Kintampo South	81,000	671	8.3
Kintampo North Municipal	95,480	673	7
Asutifi South	53,584	227	4.2
Dormaa West	47,678	275	5.8
Techiman North	59,068	427	7.2
Banda	20,282	191	9.4
Sene East	61,076	271	4.4

Source: Ghana Statistical Service, 2010 Population and Housing Census

Table 2.5 presents the causes of deaths in the district. The total deaths recorded for the past 12 months prior to the census night is 566 and this constitutes 4.0 percent of the total deaths in the region.

Out of the total deaths in the district, an overwhelming majority (94.5%) were as a result of other causes of death as against 5.5 percent of death caused by accident/violence/homicide/suicide.

Comparatively, percentage of death caused by accident/violent/homicide/suicide in the district is lower (5.5%) than the regional percentage of 8.7 percent. However, the other causes of deaths in the district (94.5%) are slightly higher than the regional figure of 91.3 percent.

Table 2.5: Causes of deaths in households

District	Total deaths	Death due to	
		Accident/ violence/ homicide /suicide	All other causes
BRONG AHAFO	14,189	1,235	12,954
Asunafo South	472	39	433
Asunafo North Municipal	626	65	561
Asutifi North	460	31	429
Dormaa Municipal	782	71	711
Dormaa Central Municipal	399	35	364
Tano South	542	47	495
Tano North	475	33	442
Sunyani Municipal	455	36	419
Sunyani West	462	70	392
Berekum Municipal	858	79	779
Jaman South	514	55	459
Jaman North	627	39	588
Tain	566	31	535
Wenchi Municipal	704	52	652
Techiman Municipal	854	103	751
Nkoranza South	703	81	622
Nkoranza North	637	30	607
Atebubu Amantin	625	62	563
Sene West	344	34	310
Pru	351	22	329
Kintampo South	671	50	621
Kintampo North Municipal	673	55	618
Asutifi South	225	21	204
Dormaa West	275	26	249
Techiman North	427	35	392
Banda	191	11	180
Sene East	271	22	249

Ghana Statistical Service, 2010 Population and Housing Census

Figure 2.2 presents reported deaths for the various age groups and the sex variations in the Tain district. According to the 2010 Population and Housing Census, the district records 566 deaths for the past 12 months prior to the census.

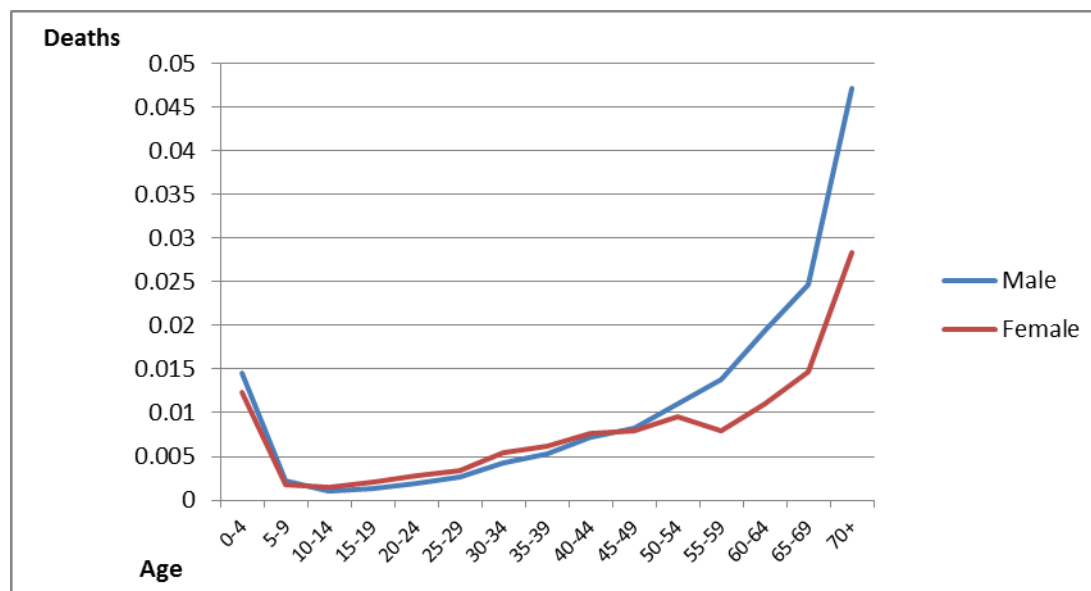
Generally, age specific death rates are ‘U’ shape. High at the beginning of life and reduces gradually to low level around age 30-35years and climbs again reaching a high level at the older ages.

The figure follows the expected pattern at the initial stage that under-five mortality which is the probability of dying between birth and the fifth birthday is very high in the district. It shows that, for every thousand live births in the age group 0-4 years, the male records fifteen (15) deaths which are slightly higher than the female of twelve (12) deaths out of every thousand live births. The death rate declines tremendously at age group 5- 9 years where it is almost at par for both sexes.

Again, in the reproductive age group 15 -44years, the female age specific death rates begin to be higher than that for males. This trend or pattern continues to the age group 40- 44 where the female deaths slightly outweighs the male deaths.

However, from age group 45- 49 to the oldest age group, the males then assume a higher rate of death than the females. A sharp rise of male deaths then begins from the age group 50-54 years to the old age where for every thousand births, about forty- seven (47) males die which is about as twice as female deaths.

Figure 2.2: Reported age specific death rates by sex



Source: Ghana Statistical Service, 2010 Population and Housing Census

2.4.4 Migration

Internal migration has played an important role in spatially redistributing the population of Ghana. Migrants tend to contribute directly to population decrease in the areas of origin or increase in the destination areas. Migration is also selective with regard to age, sex and therefore productive capacity. Thus, migration has significant demographic, social and economic impact on both the areas of origin and destination⁴.

On the basis of the answer to the “place of birth” question in the 2010 census, migrants are defined as persons who were enumerated in a place different from where they were born, while non-migrants are persons who were enumerated in the place they were born.

Table 2.6 shows that a total of 19,452 persons have migrated into the Tain District. This is about one in five (22.1%) of the total population of the district (88,104). The table reveals that 7,030 representing 36.1 percent of migrants were born elsewhere in the region whereas 12,422 migrants representing 63.9 percent were born elsewhere in another region in Ghana. 552 persons representing 2.8 percent were born outside Ghana.

For those born elsewhere in another region in Ghana, the largest proportion (65%) comes from the Upper West region. This may be as a result of proximity of this region to the district.

In relation to duration of residence, about one third (35.1%) of the migrants have been in the district for ten years or more whereas close to half (49.8%) have been in the district for 1-9 years. This implies that the district has been attractive to migrants.

⁴(Anarfi et al., 2003)

Table 2.6: Birthplace by duration of residence of migrants

Birthplace	Number	Duration of residence (%)				
		Less than 1 year	1-4 years	5-9 years	10-19 years	20+ years
Total	19,452	15.1	28.5	21.3	19.4	15.7
Born elsewhere in the region	7,030	16.8	28.2	18.2	16.4	20.4
Born elsewhere in another region:						
Western	913	18.6	35.8	22.0	16.6	6.9
Central	120	7.5	41.7	20.0	15.0	15.8
Greater Accra	160	18.8	36.9	16.9	13.8	13.8
Volta	109	16.5	41.3	10.1	14.7	17.4
Eastern	148	20.9	33.1	20.3	16.9	8.8
Ashanti	703	20.1	30.7	15.5	15.4	18.3
Brong Ahafo	-					
Northern	1,153	16.8	30.7	25.2	16.2	11.0
Upper East	841	14.1	21.0	25.2	27.0	12.6
Upper west	7,723	12.3	27.3	23.9	23.0	13.6
Outside Ghana	552	15.9	33.3	20.5	17.2	13.0

Source: Ghana Statistical Service, 2010 Population and Housing Census

It is a known fact that as people migrate, they bring with them skills and innovations. There is also the desire to survive at their place of destination and this serves as motivation for them to work hard. The district has over the years continued to enjoy the benefits that come about as a result of the presence of the migrants.

However, one should not lose sight of the fact that the presence of this sizeable number of migrants could serve as breeding grounds for ethnic and religious competition and conflicts as a result of inadequacy of facilities in the district.

CHAPTER THREE

SOCIAL CHARACTERISTICS

3.1 Introduction

The 2010 population and housing census collected data on the social characteristics of the population in the district. These characteristics include household size and composition, marital status, nationality, religious affiliation and literacy and education. This chapter analyses the socio-cultural characteristics of the district with reference to the household. A household is defined as a person or group of persons who live together in the same house or compound and share the same house-keeping arrangements and recognized one person as the head of household. Members of a household may not necessarily be related by blood or marriage. The chapter analyses data on household composition and size, headship, marital status, religious affiliation, nationality and education.

3.2 Household Size, Composition and Structure

Data on household size, composition and headship constitute the basis for planning economic and social services needed by the population. It is within this context that the 2010 population and housing census gathered data on these indicators for planning purposes.

A household may include a man, his wife, children, distant relatives, or a housekeeper living with them. Visitors who spent the census night with the household were also enumerated as members of the household as individuals were enumerated with respect to where they spent the census night, i.e., Midnight of 26th September, 2010.

The household head on other hand was also defined as a male or female member of the household recognized as such by the other household members. The head of household is generally the person who has economic and social responsibility for the household and all relationships are also defined with reference to the head. Households differ in size, composition and structure.

3.2.1 Household size

The household is one of the basic units for demographic, social and economic analysis. Household size refers to the total number of persons in a household irrespective of age, sex, and/or relationship to the head. Table 3.1 presents data on household size in the Tain District by locality. From 2010 Population and Housing Census results, the district recorded a total household population of 87,245 with 16,313 households, which translates to an average household size of 5.3 persons in each household. This is higher than the regional average of 4.7. The rural average household size (5.1) is about the same as that of the urban areas (5.6). More than half (51.5%) of the total household population in the district is found in the urban areas and 48.5 percent in the rural communities. However, the percentage of number of households in the rural areas (50.5%) is slightly higher than in the urban areas (49.5%).

Table 3.1: Household size by locality

Category	Region	District				
		Total	Urban		Rural	
			Number	Percent	Number	Percent
Total Household Population	2,265,458	87,245	44,894	51.5	42,351	48.5
Number Of Household	490,515	16,313	8,082	49.5	8,237	50.5
Average Household Size	4.7	5.3	5.6		5.1	

Source: Ghana Statistical Service, 2010 Population and Housing Census

3.2.2 Household composition

The head by definition need not be the oldest person in the house or the person who is financially responsible for the upkeep of the family. It is rather the person who all members of the household recognize as their head, regardless of age and sex.

Table 3.2 shows that there are 16,313 (18.7%) household heads. Horizontal percentages calculated using the heads reveal that, male headed households constitute 64.1 percent while female headed households represent 35.9 percent. Thus, there are nearly twice as many male household heads than females in the Tain District

This situation could be attributed to age long cultural practices. Traditionally, men are considered as leaders of their households. Men have access to land and other means of gaining economic power over women, and this enables them to be accepted as household heads.

3.2.3 Household structure

Household composition refers to the patterns of relationships between the head of household and other members of the household. This includes relationships such as spouse (wife/husband), child (son/daughter), grandchild, parent/parent-in-law, brother/sister, other relative and non-relative.

Biological children constitute the largest percentage of household membership (42.3%) followed by the head of households (18.7%), Spouse (husband/wife) constitutes 8.7 percent while extended family members (grandchildren, brother/sister and other relatives of the head) together comprise 25.4 percent. Son/Daughter in-laws are the least (0.4%). The proportion of female spouses of (16.5%) is over ten times higher than that of males (0.8%). Male heads as a proportion of the total male household population is 24.3 percent compared to 13.3 percent female heads as a proportion of the total female household population.

Table 3.2: Household population by composition and sex

Household composition	Total		Male		Female	
	Number	Percent	Number	Percent	Number	Percent
Total	87,126	100.0	43,052	100.0	44,074	100.0
Head	16,313	18.7	10,448	24.3	5,865	13.3
Spouse (wife/husband)	7,619	8.7	333	0.8	7,286	16.5
Child (son/daughter)	36,868	42.3	19,101	44.4	17,767	40.3
Parent/Parent in-law	697	0.8	68	0.2	629	1.4
Son/Daughter in-law	389	0.4	92	0.2	297	0.7
Grandchild	10,736	12.3	5,253	12.2	5,483	12.4
Brother/Sister	4,191	4.8	2,443	5.7	1,748	4.0
Step child	876	1.0	467	1.1	409	0.9
Adopted/Foster child	512	0.6	242	0.6	270	0.6
Other relative	7,201	8.3	3,463	8.0	3,738	8.5
Non-relative	1,724	2.0	1,142	2.7	582	1.3

Source: Ghana Statistical Service, 2010 Population and Housing Census

3.2.4 Household population by structure and sex

Household structure is defined as the classification of ties of affiliations of persons who constitute a household. Classification of household structure depends on whether it is a single person household, head and spouse only household, nuclear household (head, spouse(s) and their children), and nuclear, extended and other combinations.

Ten categories of household structure have been identified namely; Head only, Head and a spouse only, Nuclear (Head spouse(s) children) Single parent, Nuclear Extended + non relatives, Head spouse(s) and other composition, Extended (Head spouse(s) children Head's relatives), Single parent Extended Single parent, Extended + non relative, Head and other composition but no spouse.

Table 3.3 gives information on household population by structure and sex. The data on household structure from table 3.3 reveals two distinct features about the nature of the household structure in the district; the prevalence and strength of the extended family system vis-a-vis the nuclear family system and the emerging single parent family system. The table shows that almost two-thirds of the population in the Tain District (66.5%) lives in various extended family households whereas 33.6 percent live in nuclear family households. The population in households of the traditional typical extended family household (head, spouse(s), children, head's relatives constitute (27.3%) in the district followed by nuclear family of head, spouse(s) and children representing 21.5 percent of the household population. In addition, a household with head only, that is single person households, constitutes 2.1 percent (1,795) of the total population of households in the district. However, household with head and a spouse only constitute the least with 1.0 percent.

The emerging phenomenon of single parent family structures both, nuclear and extended, take a significant proportion of the family system comprise almost one in three (30.2%) of the household population. This may be due to out-migration of male spouses and/or in-migration of single parent women in informal sector business. Marital disruptions (divorce, separation and widowhood) may also account for the growth in single parent family structures.

However, when household structures are disaggregated into the male and female populations, table 3.3, shows that the proportion of males in the nuclear family households (34.5%) is more than that of females (32.5%). On the other hand, the proportion of females (67.4%) in

the extended family household is more than that of males (65.4%). This may be attributed to the single parent extended households, where the proportion of females is 26.4 percent compared to the proportion for males of 20.0 percent. Tain District is a matrilineal society. Matrilineal cultural practices and/or marital disruptions may account for the dominance of females in the single parent extended households. On the whole, due to some reasons, single parent families (both nuclear and extended have a higher proportion of members who are females).

Table 3.3: Household population by structure and sex

Household structure	Total		Male		Female	
	Number	Percent	Number	Percent	Number	Percent
Total	87,126	100.0	43,052	100.0	44,074	100.0
Nuclear Family						
Head only	1,795	2.1	1,303	3.0	492	1.1
Head and a spouse only	856	1.0	428	1.0	428	1.0
Single parent Nuclear	7,817	9.0	3,370	7.8	4,447	10.1
Nuclear (Head spouse(s) children)	18,743	21.5	9,777	22.7	8,966	20.3
Extended Family						
Extended (Head spouse(s) children Head's relatives)	23,822	27.3	12,258	28.5	11,564	26.2
Extended + non relatives	2,337	2.7	1,250	2.9	1,087	2.5
Head spouse(s) and other composition	3,299	3.8	1,751	4.1	1,548	3.5
Single parent Extended	18,452	21.2	7,768	18.0	10,684	24.2
Single parent Extended + non relative	1,837	2.1	875	2.0	962	2.2
Head and other composition but no spouse	8,168	9.4	4,272	9.9	3,896	8.8

Source: Ghana Statistical Service, 2010 Population and Housing Census

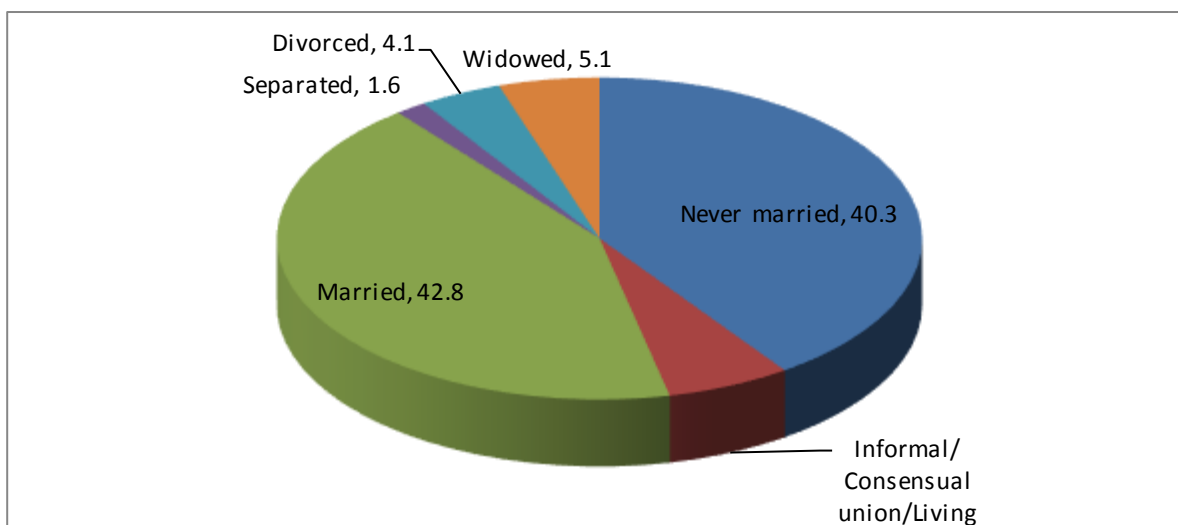
3.3 Marital status

Marriage is a highly valued institution in Ghana. It is one of the determinants of an individual status and also an indicator of social responsibility, trust and achievement. Every adult unless afflicted by serious illness or deformity is expected to marry. Voluntary celibacy was frowned upon in traditional Ghana. Most adults would therefore wish to get married at one time or the other and this is more so with females.

The 2010 Census classified “marital status” into six categories namely; never married, living together/consensual union, married, separated, divorced and widowed. Each individual aged 12 years and older is classified into only one of the six categories. The definition of marriage includes persons in any of the following types of marriages: civil, traditional and common law/consensual.

The data shows (Figure 3.1) there are 59,021 persons 12 years and older. About 53.5 percent have ever been married; 40.3 percent have never married, 49.0 percent are currently married or living together whiles 5.7 percent are separated or divorced and 5.1 percent are widowed.

Figure 3.1: Marital status



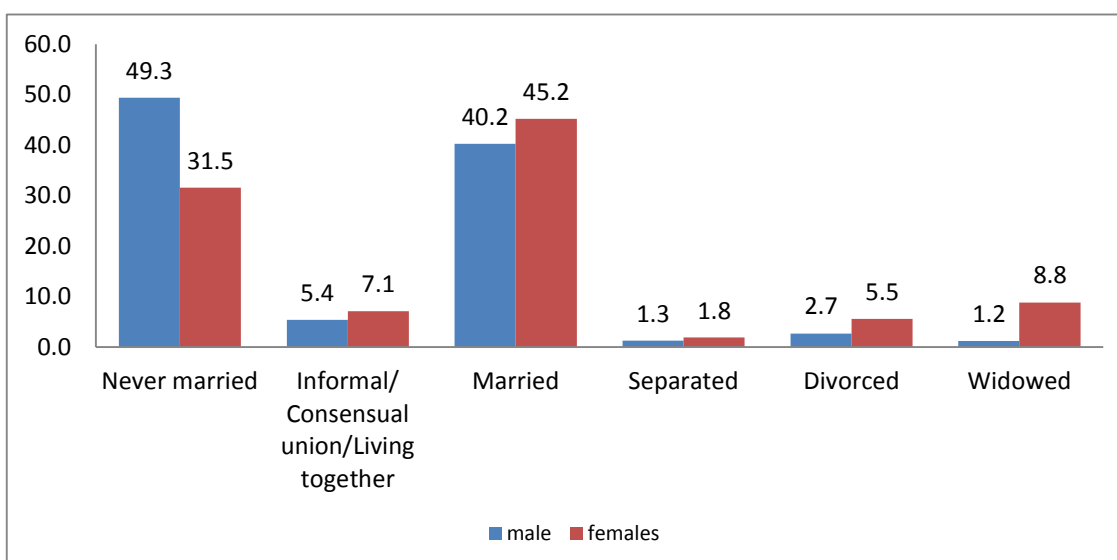
Source: Ghana Statistical Service, 2010 Population and Housing Census

3.3.1 Marital status by sex and age

Figure 3.2 looks at marital status of persons 12 years and older in the Tain District by sex. Whereas only about one in three females (31.5%) have never married, the proportion of males is nearly fifty percent (49.3%). However, an opposite trend emerges in relation to widowhood. The proportion of females widowed is about seven times higher (8.8% versus 1.2%). This could be due to the fact that females marry earlier than males and tend to marry men older than themselves with a higher probability of death of these older men. Also with polygamy, the death of one husband results in more than one woman being widowed. Furthermore, a polygamous man who loses one of his wives still remains married and does not enter the statistics of being widowed.

Also, amongst persons who are married, there are more females (45.2%) than males (40.2%). Similar trend is observed among those who are in informal/consensual/living together where there are more females (7.1%) than males (5.4%).

Figure 3.2: Marital status 12 years and older by sex



Source: Ghana Statistical Service, 2010 Population and Housing Census

Table 3.4 shows that, in the district, the proportion never married is very high at the younger ages and decreases with increasing age. The opposite is the case with the proportion currently married; it is low at the younger ages and increases with age. Although the legal age for marriage in the country is 18 years, among those aged 12-14 years about, about five percent (4.9%) indicated that they are currently married and a small fraction (0.8%) in consensual unions. The proportion currently married rose to 6.2 percent of those aged 15-19 years increasing rapidly with age such that by age 45-49 the proportion of the population currently married is as high as 78.5 percent.

The percentage of the population who are widowed increases with age to the extent that by age 65 years, about one in three (34.7%) are widowed.

The table also shows that there are substantial variations between males and females in the pattern of movements into and out of marital status categories. For example, by age 25-29 years, only 17.9 percent of females have never married compared to 55.7 percent of males. The pace of moving out of the never married cohort is thus faster for females than for males. The proportion of females never married declines from 85.9 percent to 45.5 percent and 17.9 percent among 15-19, 20-24 and 25-29 years old respectively.

For males, exiting from the never married category is more gradual with the proportion never married declining from its high level of 93.8 percent in the age group 15-19 years to 84.5 percent in the age group 20-24 years and further to 55.7 percent in the age group 25-29 years.

The data further shows that from age 50 years, the proportion of females who are currently married begins to decrease while the proportion widowed begins to increase, and by age 65 years and over, more than fifty percent (52.8%) of females are widowed. In contrast the proportion of males who are currently married continues to increase with age to 55 – 59 years and then declines only slightly. For males, becoming a widower rises higher than one percent (1.5%) at age 40 – 44 years to a peak of 7.4 percent at age 65 years and older. The data thus show that there is a positive association between age and widowhood but with the proportions higher for females than for males.

On the whole in the district by age 40 – 44, over eighty percent of both males and females have ever married. This is because marriage is highly valued in Ghana. It is one of the determinants of an individual's status and also an indication of social responsibility, trust and achievement. In traditional Ghana every adult, unless afflicted by serious illness or deformity is expected to marry. Voluntary celibacy is frowned upon. Most adults would therefore wish to get married at one time or the other and more so with females. This is demonstrated in the district.

Table 3.4: Persons 12 years and older by sex, age-group and marital status

Sex/Age-group	Number	Total	Never married	Informal/Consensual union/Living together	Married	Separated	Divorced	Widowed
Both Sexes								
Total	59,021	100.0	40.3	6.2	42.8	1.6	4.1	5.1
12 - 14	6,477	100.0	94.4	0.8	4.9	0	0	0
15 - 19	9,553	100.0	90.1	3.1	6.2	0.3	0.3	0.1
20 - 24	7,352	100.0	64.5	10.7	22.2	1	1.4	0.2
25 - 29	6,609	100.0	35.6	13.2	46.1	1.6	2.8	0.7
30 - 34	5,592	100.0	16.3	11.4	65.1	2.3	4	0.8
35 - 39	4,738	100.0	8.1	8.5	73.7	2.7	5	2
40 - 44	3,973	100.0	5.1	5.5	76.6	3	6.2	3.5
45 - 49	3,142	100.0	2.9	4.5	78.5	2.4	7.4	4.3
50 - 54	2,915	100.0	2.7	3.3	73.1	2.2	10	8.6
55 - 59	1,895	100.0	2.6	2.3	70.8	2.7	10	11.6
60 - 64	1,687	100.0	3.6	2.2	65.7	2.4	10.5	15.7
65+	5,088	100.0	3.5	1.9	47.5	2	10.4	34.7
Male								
Total	28,943	100.0	49.3	5.4	40.2	1.3	2.7	1.2
12 - 14	3,419	100.0	94.6	0.5	4.8	0	0	0
15 - 19	5,141	100.0	93.8	0.9	5.1	0.1	0.2	0
20 - 24	3,577	100.0	84.5	5.4	9.2	0.3	0.5	0
25 - 29	3,094	100.0	55.7	12.3	29	1.3	1.4	0.4
30 - 34	2,596	100.0	27.3	12.6	54.7	2	3	0.3
35 - 39	2,355	100.0	13.5	9.1	70.2	2.7	3.8	0.7
40 - 44	1,972	100.0	7.8	6.6	77.3	2.6	4.3	1.4
45 - 49	1,560	100.0	4.2	5.3	81.5	2.2	5.6	1.2
50 - 54	1,372	100.0	4.3	3.9	80.8	1.9	6.6	2.5
55 - 59	997	100.0	3.1	2.1	81.7	2.4	6.7	3.9
60 - 64	825	100.0	4.4	2.9	80.4	2.5	6.3	3.5
65+	2,035	100.0	5.3	2.9	75.4	1.6	7.3	7.4
Female								
Total	30,078	100.0	31.5	7.1	45.2	1.8	5.5	8.8
14-Dec	3,058	100.0	94	1	4.9	0	0	0
15 - 19	4,412	100.0	85.9	5.7	7.5	0.5	0.3	0.2
20 - 24	3,775	100.0	45.5	15.7	34.5	1.7	2.2	0.4
25 - 29	3,515	100.0	17.9	14	61.2	1.8	4.1	1
30 - 34	2,996	100.0	6.8	10.3	74.1	2.6	4.9	1.3
35 - 39	2,383	100.0	2.8	7.9	77.2	2.6	6.1	3.4
40 - 44	2,001	100.0	2.4	4.4	76	3.5	8	5.6
45 - 49	1,582	100.0	1.6	3.7	75.7	2.5	9.2	7.3
50 - 54	1,543	100.0	1.3	2.8	66.4	2.5	13	14
55 - 59	898	100.0	2.1	2.6	58.6	3	13.7	20
60 - 64	862	100.0	2.8	1.5	51.6	2.2	14.5	27.4
65+	3,053	100.0	2.3	1.3	28.9	2.3	12.4	52.8

Source: Ghana Statistical Service, 2010 Population and Housing Census

3.3.2 Marital status by sex and level of education

Among the population of 59,021 aged 12 years and older, 37.1 percent have no education, over one in two (50.6%) have basic education, one in ten (9.4%) reached secondary school; 0.6 percent reached Vocational/Technical and Commercial level. For 1.9 percent, the level reached is post middle/secondary certificate/diploma. Less than one percent (0.4%) reached Tertiary level.

Out of the total population of 23,772 persons who have never married, 14.2 percent do not have any level of education. Majority of those who have ever attended school amongst the never married population have only basic education (67.6%) with 15.5 percent having obtained secondary education. Only 0.4 percent of the never married populations have tertiary level of education.

Amongst the married population of 25,234 persons however, 52.3 percent have no level of education. 39.2 percent of them have only basic level of education with only 5.2 percent having obtained secondary level of education. Those who have attained tertiary education amongst the married population are only 0.4 percent.

With regards to the population who are in informal or consensual unions, majority (56.4%) have basic level of education and 30.1 percent with only no level of education.

In terms of the widowed and the divorced, eight out of ten widowed (83.3%) and more than half (54.4%) of the divorced have no levels of education. Those who are separated shares similar pattern with the population in the consensual unions.

Comparing males and females in various marital status and educational level categories, table 3.5 also shows that there are significant variations between males and females in the district. For example, the proportion of females who have no education (44.6%) is far higher than the district proportion of 37.1 percent whereas that for the males (29.3%) is lower than the district proportion. Again, the proportion of males (54.6%) with basic education and in consensual union is lower than the district proportion of 56.4 percent and females (57.7%).

The percentage of male widowed (69.9%) who have no education is lower than that of the females (85.0%). With the exception of the percentage for males that are never married (15.2%) there are more females who have no education than males in all the categories of marital status. The percentages of both males and females who have secondary education are high in all the categories. Again, the never married persons recorded the highest percentages for secondary level education for both males (16.4%) and females (14.1%) with the widowed population recording the lowest (male 3.6%, female 1.1%). However, both the male and female populations who had vocational (technical, commercial), post middle (secondary certificate, diploma) and tertiary levels of education in all the categories of marital status recorded proportions less than five percent

Table 3.5: Persons 12 years and older by sex, marital status and level of education

Sex/Marital status	Number	All levels	No Education	Basic ¹	Secondary ²	Voc./ Tech/ Comm	Post middle/ secondary certificate/ diploma ³	Tertiary ⁴
Both Sexes								
Total	59,021	100.0	37.1	50.6	9.4	0.6	1.9	0.4
Never married	23,772	100.0	14.2	67.6	15.5	0.6	1.7	0.4
Informal/Consensual union/Living together	3,678	100.0	30.1	56.4	10.4	0.6	2.2	0.4
Married	25,234	100.0	52.3	39.2	5.2	0.7	2.2	0.4
Separated	917	100.0	40.5	50.1	6.5	1.1	1.6	0.2
Divorced	2,436	100.0	54.4	39.6	3.7	0.5	1.7	0.1
Widowed	2,984	100.0	83.3	14.5	1.3	0.3	0.5	0
Male								
Total	28,943	100.0	29.3	54.5	12	0.7	2.9	0.7
Never married	14,283	100.0	15.2	65.2	16.4	0.5	2.1	0.5
Informal/Consensual union/Living together	1,549	100.0	25.6	54.6	14.7	0.5	3.9	0.8
Married	11,645	100.0	44.8	42.7	7	0.9	3.8	0.8
Separated	362	100.0	35.6	51.1	9.4	1.1	2.2	0.6
Divorced	769	100.0	42.3	47.9	6.2	0.5	3.1	0
Widowed	335	100.0	69.9	22.7	3.6	2.1	1.8	0
Female								
Total	30,078	100.0	44.6	47	6.9	0.5	0.9	0.1
Never married	9,489	100.0	12.7	71.3	14.1	0.6	1.2	0.2
Informal/Consensual union/Living together	2,129	100.0	33.3	57.7	7.2	0.8	0.9	0
Married	13,589	100.0	58.8	36.1	3.6	0.5	0.9	0.1
Separated	555	100.0	43.6	49.4	4.7	1.1	1.3	0
Divorced	1,667	100.0	60	35.8	2.5	0.5	1.1	0.1
Widowed	2,649	100.0	85	13.5	1.1	0.1	0.3	0

Source: Ghana Statistical Service, 2010 Population and Housing Census

3.3.3 Marital status and economic activity

Table 3.6 shows persons 12 years and older by their sex, marital status and economic activity status. Out of a total number of 59,021 of the population 12 years and older at all the different categories of economic status, 44,503 (75.4%) are employed, 572 (1.0%) are unemployed while 13,946 (23.6%) are economically not active.

Among the never married, 55.6 percent are employed, 1.2 percent unemployed and 43.2 percent economically not active. Thus, the populations who have never married also have the highest proportion of economically not active persons in the district as revealed also in table 3.4 where up to 90 percent of the population 12-19 years are not married.

Also, amongst the population of 3,678 who are in informal or consensual unions, about four in five (88.0%) are employed, 1.7 percent unemployed and about one in ten (10.3%) economically not active.

On the whole, whereas the proportions employed shows a pattern of increase of each subsequent level of marital status after the never married to the widowed, the proportions of unemployed and not economically active do not follow such a consistent pattern.

Among the married population of 25,234 persons however, 91.7 percent are employed, about one percent (0.7%) are unemployed with 7.5 percent being economically not active.

A similar pattern is observed for the populations in the other marital status categories. There are higher proportions who are employed compared to the unemployed and economically not active.

Again, males recorded higher proportion (76.6%) than females (74.3%) in the employed population. The percentage of male never married (60.7%) who are employed is more than that of the females (48.0%). There are more females who are unemployed and economically not active than males in all the categories of marital status. The percentages of both males and females who are employed increases rapidly among those in informal unions and those who are separated where it begins to decline slightly. More females (2.2%) relative to males (1.2%) in informal unions are unemployed.

Table 3.6: Persons 12 years and older by sex, marital status and economic activity status

Sex/Marital status	Total		Employed		Unemployed		Economically not active	
	Number	Percent	Number	Percent	Number	Percent	Number	Percent
Both Sexes								
Total	59,021	100.0	44,503	75.4	572	1	13,946	23.6
Never married	23,772	100.0	13,226	55.6	283	1.2	10,263	43.2
Informal/Consensual union/Living together	3,678	100.0	3,235	88	64	1.7	379	10.3
Married	25,234	100.0	23,147	91.7	182	0.7	1,905	7.5
Separated	917	100.0	796	86.8	10	1.1	111	12.1
Divorced	2,436	100.0	2,131	87.5	18	0.7	287	11.8
Widowed	2,984	100.0	1,968	66	15	0.5	1,001	33.5
Male								
Total	28,943	100.0	22,161	76.6	240	0.8	6,542	22.6
Never married	14,283	100.0	8,668	60.7	155	1.1	5,460	38.2
Informal/Consensual union/Living together	1,549	100.0	1,443	93.2	18	1.2	88	5.7
Married	11,645	100.0	10,814	92.9	55	0.5	776	6.7
Separated	362	100.0	328	90.6	3	0.8	31	8.6
Divorced	769	100.0	666	86.6	7	0.9	96	12.5
Widowed	335	100.0	242	72.2	2	0.6	91	27.2
Female								
Total	30,078	100.0	22,342	74.3	332	1.1	7,404	24.6
Never married	9,489	100.0	4,558	48	128	1.3	4,803	50.6
Informal/Consensual union/Living together	2,129	100.0	1,792	84.2	46	2.2	291	13.7
Married	13,589	100.0	12,333	90.8	127	0.9	1,129	8.3
Separated	555	100.0	468	84.3	7	1.3	80	14.4
Divorced	1,667	100.0	1,465	87.9	11	0.7	191	11.5
Widowed	2,649	100.0	1,726	65.2	13	0.5	910	34.4

Source: Ghana Statistical Service, 2010 Population and Housing Census

3.4 Nationality

Nationality refers to the country to which a person or an individual belongs.

Table 3.7 shows that out of the total population of 88,104 in Tain District 98.1 percent of them are Ghanaians. That is either by birth (96.0%), naturalization (0.5%) or by dual nationality (1.6%).

However, close to one percent (0.9%) of the population in the district are nationals from other West African countries other than Ghana with only 0.5 percent being nationals outside ECOWAS.

Variations by sex follow similar pattern just as shown above where majority for both sexes are Ghanaians either by birth, naturalization or dual citizenship.

Table 3.7: Population by nationality and sex

Nationality	Both sexes		Male		Female	
	Number	Percent	Number	Percent	Number	Percent
Total	88,104	100.0	43,508	100.0	44,596	100.0
Ghanaian by birth	84,542	96.0	41,679	95.8	42,863	96.1
Dual nationality (Ghanaian & Other)	1,411	1.6	704	1.6	707	1.6
Ghanaian by naturalization	473	0.5	228	0.5	245	0.6
ECOWAS	793	0.9	454	1.0	339	0.8
African other than ECOWAS	467	0.5	245	0.6	222	0.5
Other	418	0.5	198	0.5	220	0.5

Source: Ghana Statistical Service, 2010 Population and Housing Census

3.5 Religious Affiliation

Religion refers to the individual's religious affiliation as reported by the respondent, irrespective of the religion of the household head or the head's spouse or the name of the person.

Out of the total population of 88,104 persons in the district, majority (71.9%) are Christians. This comprises of Catholics (30.6%), Protestants (20.6%), Pentecostals (14.7%) and 6.0 percent forming the rest of the Christian population. Quite a sizeable percentage of the population (15.5%) belongs to the Islamic religion while traditionalists constitute 2.9 percent.

Table 3.8: Population by religion and sex

Religion	Both sexes		Male		Female	
	Number	Percent	Number	Percent	Number	Percent
Total	88,104	100.0	43,508	100.0	44,596	100.0
No religion	7,780	8.8	4,692	10.8	3,088	6.9
Catholic	26,960	30.6	13,133	30.2	13,827	31.0
Protestants (Anglican Lutheran etc.)	18,175	20.6	8,454	19.4	9,721	21.8
Pentecostal/Charismatic	12,979	14.7	5,979	13.7	7,000	15.7
Other Christian	5,264	6.0	2,438	5.6	2,826	6.3
Islam	13,679	15.5	6,997	16.1	6,682	15.0
Traditionalist	2,560	2.9	1,483	3.4	1,077	2.4
Other	707	0.8	332	0.8	375	0.8

Source: Ghana Statistical Service, 2010 Population and Housing Census

3.6 Literacy and Education

3.6.1 Population 11 years and older by sex, age and literacy status

The literate population 11 years and older is higher than the not literate population of 22,004 as shown in able 3.9. However, of the literate population (39,054), twenty percent are literate only in English language. Seventy- one percent (71.2%) are also literate in both English and any of the Ghanaian languages. Those who are literate in Ghanaian language only are 8.2 percent.

Table 3.9: Population 11 years and older by sex, age and literacy status

Age	None (Not Literate)	Literate	Total	English only	Ghanaian language only	English and Ghanaian language	English and French	English, French and Ghanaian language
Both sexes								
Total	22,004	39,054	100.0	20	8.2	71.2	0.3	0.3
11 -14	565	7,949	100.0	28	8.4	63.1	0.2	0.2
15-19	1,076	8,477	100.0	20.8	5.3	73.5	0.3	0.2
20-24	1,731	5,621	100.0	17.9	5.8	75.6	0.4	0.3
25-29	2,234	4,375	100.0	17.9	8.6	72.7	0.5	0.4
30-34	2,245	3,347	100.0	18	10.8	70.7	0.3	0.2
35-39	2,160	2,578	100.0	17.6	11.2	70.4	0.5	0.3
40-44	2,175	1,798	100.0	16.5	10.5	72.4	0.2	0.4
45-49	1,725	1,417	100.0	17.2	10.9	70.4	0.8	0.7
50-54	1,649	1,266	100.0	13.8	11.5	74.4	0.2	0.2
55-59	1,066	829	100.0	11.5	8.9	79	0.2	0.4
60-64	1,152	535	100.0	10.1	12	77	0	0.9
65+	4,226	862	100.0	13.8	13.1	72.7	0.2	0.1
Male								
Total	8,532	21,456	100.0	19.1	6.5	73.6	0.4	0.3
14-Nov	265	4,199	100.0	28	7.8	63.7	0.3	0.2
15-19	535	4,606	100.0	20.6	4.6	74.3	0.3	0.2
20-24	668	2,909	100.0	17.3	3.6	78.4	0.4	0.4
25-29	884	2,210	100.0	15.7	6.2	77.1	0.6	0.5
30-34	849	1,747	100.0	17.6	7.4	74.4	0.4	0.2
35-39	871	1,484	100.0	15.6	8.4	75	0.6	0.4
40-44	859	1,113	100.0	14.1	7	77.9	0.4	0.6
45-49	662	898	100.0	17.3	9.4	72	0.9	0.4
50-54	603	769	100.0	14.2	6.8	78.7	0.3	0.1
55-59	424	573	100.0	9.1	7.9	82.2	0.3	0.5
60-64	425	400	100.0	10.8	9.3	79.3	0	0.8
65+	1,487	548	100.0	14.6	12.2	72.6	0.4	0.2
Female								
Total	13,472	17,598	100.0	21.1	10.3	68.2	0.2	0.2
1114	300	3,750	100.0	28	9.1	62.5	0.2	0.2
15-19	541	3,871	100.0	21.1	6.1	72.6	0.2	0.1
20-24	1,063	2,712	100.0	18.6	8.3	72.6	0.3	0.2
25-29	1,350	2,165	100.0	20.1	11	68.3	0.3	0.2
30-34	1,396	1,600	100.0	18.5	14.6	66.6	0.2	0.2
35-39	1,289	1,094	100.0	20.4	15	64.2	0.4	0.1
40-44	1,316	685	100.0	20.3	16.2	63.4	0	0.1
45-49	1,063	519	100.0	17.1	13.5	67.6	0.6	1.2
50-54	1,046	497	100.0	13.3	18.7	67.8	0	0.2
55-59	642	256	100.0	16.8	11.3	71.9	0	0
60-64	727	135	100.0	8.1	20	70.4	0	1.5
65+	2,739	314	100.0	12.4	14.6	72.9	0	0

Source: Ghana Statistical Service, 2010 Population and Housing Census

Interestingly, across all the age groups, majority of the population are literate in English and Ghanaian language than any other language. The second highest across all the age-groups is literacy in English only.

In terms of sex variation moreover, greater difference is observed as male literate is much higher than the female literate of 17,598 while opposite is realized for the not literate.

3.6.2 Education

Table 3.10 shows a greater proportion of population 3years and older for females more than males at the lower levels of education. Consequently, as they climb the educational ladder at the higher levels the male proportion becomes higher than the females.

At the lower levels of education from nursery to primary, the proportion of sex variation currently attending or ever attended in the past school is higher for females than for males. However, this trend is reversed from JSS/JHS level upwards where the proportion of males is significantly higher than that for females.

In general, close to half of the population 3years and older currently attending school have primary level of education (49.4%) while about one third (36.1%) of that same population ever attended in the past have JSS/ JHS level of education.

Table 3.10: Population 3 years and older currently attending school or attended school in the past by level of education and sex

Level of education	Currently attending						Attended in the past					
	Both sexes		Male		Female		Both sexes		Male		Female	
	Number	Percent	Number	Percent	Number	Percent	Number	Percent	Number	Percent	Number	Percent
Total	33,068	100.0	17,534	100.0	15,534	100.0	22,659	100.0	12,293	100.0	10,366	100.0
Nursery	1,709	5.2	857	4.9	852	5.5	-	0.0	-	0.0	-	0.0
Kindergarten	5,992	18.1	2,982	17.0	3,010	19.4	-	0.0	-	0.0	-	0.0
Primary	16,352	49.4	8,523	48.6	7,829	50.4	5,351	23.6	2,347	19.1	3,004	29.0
JSS/JHS	6,087	18.4	3,369	19.2	2,718	17.5	8,180	36.1	3,898	31.7	4,282	41.3
Middle	-	0.0	-	0.0	-	0.0	4,796	21.2	3,146	25.6	1,650	15.9
SSS/SHS	2,618	7.9	1,588	9.1	1,030	6.6	2,332	10.3	1,450	11.8	882	8.5
Secondary	-	0.0	-	0.0	-	0.0	603	2.7	437	3.6	166	1.6
Vocational/Technical/Commercial	42	0.1	19	0.1	23	0.1	321	1.4	185	1.5	136	1.3
Post middle/secondary certificate	109	0.3	72	0.4	37	0.2	472	2.1	340	2.8	132	1.3
Tertiary	159	0.5	124	0.7	35	0.2	604	2.7	490	4.0	114	1.1

Source: Ghana Statistical Service, 2010 Population and Housing Census

CHAPTER FOUR

ECONOMIC CHARACTERISTICS

4.1 Introduction

Governments all over the globe at certain stage of the development of their countries seek to know how many people are employed and unemployed. It should be noted that the more working population, the higher the wealth creation leading to improved living conditions and poverty reduction. It is therefore crucial that statistics on labour and labour related issues such as the rate of employment and unemployment, the dependent rate, child labour, economically active and economically not-active populations must be made available to inform policy decisions.

The 2010 Population and Housing Census collected information on economic activities on persons five years and older who worked for at least an hour in the 7 days preceding the census night. Information was also collected on those who did not work during the reference period but had jobs to go back to. This chapter seeks to discuss the issue of employed, unemployed, economically active and economically not active population. The analysis however is done with reference to the population 15 years and older. Concerning the employed population, the kind of occupation they engaged in, the kind of industry they found themselves in as well as their employment status and sectors were also dealt with.

4.2 Activity Status

Activity status refers to economic and non-economic activity of respondents during the seven days preceding the census.

- i. The economically active population is made up of the (a) **Employed** – That is, those who worked for at least one hour within the 7 days preceding the census. Those with a job but not at work, that is, persons who were temporarily not at work during the reference period but had jobs to return to, were also included in the economically active population. (b) **Unemployed** – comprising all persons who during the reference period were;
 - Without work and had no fixed jobs;
 - Currently available for work;
 - Seeking for work by taking specific steps to look for work (by writing applications, visiting job sites, and visiting employment agencies).
- ii. The **economically not active population** is made up of those who during the reference period did not work and were not seeking for work. They are classified by reasons for not being economically active. They include; homemakers, full-time students, retired persons and people with disabilities who were unable to work because of their age or disability.

Table 4.1 provides information on the activity status of the population 15 years and older. It shows that, out of the total population of 52,544 persons who are 15 years and older, 42,645

or 81.2 percent are economically active whereas 9,899 persons representing 18.8 percent is economically not active.

From the 42,645 economically active persons in the district, 42,079 or over nine in every ten (98.7%) are employed. The employed comprise 41,075 (97.6%) who have worked, 918 or 2.2 percent who did not work but had job to go back to, and 86 (0.2%) who did voluntary work without pay. On the other hand, the unemployed that is persons who worked before, seeking work and available and persons seeking work for the first time and available constitute 1.3 percent of the economically active persons in the district. Among the unemployed 63.1 percent are new entrants into the job market i.e. first time job seekers and 36.9 percent have worked before but are, at the time of the census, seeking work and available.

Over three in four of the economically not active population in the district (87.4%), fall into three main categories. About one-half of the 4,986 economically not active (50.4%) are in full time education while one-fifth (22.8%) did home duties (household chores) and 1,404 or 14.2 percent of the economically not active, is too old/young to work.

Table 4.1: Activity status of population 15 years and older by sex

Activity status	Total		Male		Female	
	Number	Percent	Number	Percent	Number	Percent
Total	52,544	100.0	25,524	100.0	27,020	100.0
Economically active	42,645	81.2	21,029	82.4	21,616	80.0
Employed	42,079	98.7	20,790	98.9	21,289	98.5
<i>Worked</i>	41,075	97.6	20,320	97.7	20,755	97.5
<i>Did not work but had job to go back to</i>	918	2.2	438	2.1	480	2.3
<i>Did voluntary work without pay</i>	86	0.2	32	0.2	54	0.3
Unemployed	566	1.3	239	1.1	327	1.5
<i>Worked before, seeking work and available</i>	209	36.9	81	33.9	128	39.1
<i>Seeking work for the first time and available</i>	357	63.1	158	66.1	199	60.9
Economically not active	9,899	18.8	4,495	17.6	5,404	20.0
Did home duties (household chore)	2,255	22.8	723	16.1	1,532	28.3
Full time education	4,986	50.4	2,876	64.0	2,110	39.0
Pensioner/Retired	72	0.7	53	1.2	19	0.4
Disabled/Sick	773	7.8	325	7.2	448	8.3
Too old/young	1,404	14.2	366	8.1	1,038	19.2
Other	409	4.1	152	3.4	257	4.8

Source: Ghana Statistical Service, 2010 Population and Housing Census

In terms of sex, table 4.1 also shows that among the population 15 years and older, there are slightly more females, 27,020 (51.4%) than males 25,524 or 48.6 percent. However, the proportion of economically active males (82.4%) is slightly more than that for females (80.0%). In terms of those employed, almost all of the males (98.9%) and the females (98.5%) are employed. Among the employed population, about the same proportion of females (2.3%) as males (2.1%) did not work in the reference period for varied reasons but had their job to go back to. Slightly more females (1.5%) than males 1.1 percent are reported to be unemployed. At least sixty percent of the unemployed are first time job seekers with a higher proportion of them (66.1%) being males. The proportion for females is 60.9 percent. However, more unemployed females (39.1%) have worked before compared to 33.9 percent of unemployed males.

Table 4.2 provides data on the economic activity status of the population 15 years and older by age and sex. In the Tain district, eighty percent (80.1%) of persons aged 15-65+ years are employed, followed by economically not active (18.8%) and unemployed (1.1%).

Within the age groupings the proportion employed rises steadily from as low as 49.7 percent in the 15-19 year age group to a peak of 96.2 percent in the age group 45-49 years. It reduces slightly to 95.6 percent in the age group 50-54 years before falling gradually with increasing age to 69.2 percent in age group 65 years and older.

The proportion of unemployed rises from a low of about one percent (0.9%) in the age group 15-19 years increasing three folds to 2.4 percent for the 20-24 year group and dropped to about two percent (1.8%) in the 25-29 year age group. It declined steadily with age from age group 30-34 years and beyond. Overall unemployment in the District is 1.1 percent. The higher level of unemployment for age groups 20-24 years and 25-29 years may mean that probably many school graduates have passed out and are in pursuit of job opportunities.

On the other hand, the proportion of economically not active is high (49.4%) in age 15-19 years and drops significantly by more than half to 24.4 percent in the 20-24 year group. The high proportion of the 15-19 year age group who are economically not active also indicates that a larger population in this 15-19 years age group might be students in full time education. The proportion of economically not active continues to decline with advancing age to age 45-49 years and then rises again for every age until 65 years and older.

In relation to sex distribution, table 4.2 also shows a similar pattern of economic activity status as by age as is observed for the entire District except that the proportions differ in magnitude for males and females. For example, whereas the proportions of males employed in age group 60-64 years is 91.3 percent, the proportion of females employed in that same age group is 87.7 percent. On the other hand, whereas the proportion of males economically not active in age group 60-64 years is 7.2 percent, the proportion of females economically not active in that same age group is 10.1 percent. For the age group 65 years and over, the proportions are 20.9 percent for males and 37.0 percent for females.

Table 4.2: Economic activity status of population 15years and older by sex and age

Age group	All Status		Employed		Unemployed		Economically not active	
	Number	Percent	Number	Percent	Number	Percent	Number	Percent
Both sexes								
Total	52,544	100.0	42,079	80.1	566	1.1	9,899	18.8
15-19	9,553	100.0	4,746	49.7	90	0.9	4,717	49.4
20-24	7,352	100.0	5,379	73.2	178	2.4	1,795	24.4
25-29	6,609	100.0	5,788	87.6	119	1.8	702	10.6
30-34	5,592	100.0	5,235	93.6	58	1.0	299	5.3
35-39	4,738	100.0	4,484	94.6	34	0.7	220	4.6
40-44	3,973	100.0	3,814	96.0	24	0.6	135	3.4
45-49	3,142	100.0	3,022	96.2	9	0.3	111	3.5
50-54	2,915	100.0	2,787	95.6	10	0.3	118	4.0
55-59	1,895	100.0	1,792	94.6	2	0.1	101	5.3
60-64	1,687	100.0	1,509	89.4	32	1.9	146	8.7
65+	5,088	100.0	3,523	69.2	10	0.2	1,555	30.6

Table 4.2: Economic activity status of population 15years and older by sex and age (cont'd)

Age group	All Status		Employed		Unemployed		Economically not active	
	Number	Percent	Number	Percent	Number	Percent	Number	Percent
Male								
Total	25,524	100.0	20,790	81.5	239	0.9	4,495	17.6
15-19	5,141	100.0	2,674	52.0	42	0.8	2,425	47.2
20-24	3,577	100.0	2,604	72.8	63	1.8	910	25.4
25-29	3,094	100.0	2,735	88.4	49	1.6	310	10.0
30-34	2,596	100.0	2,464	94.9	28	1.1	104	4.0
35-39	2,355	100.0	2,269	96.3	12	0.5	74	3.1
40-44	1,972	100.0	1,896	96.1	11	0.6	65	3.3
45-49	1,560	100.0	1,509	96.7	9	0.6	42	2.7
50-54	1,372	100.0	1,332	97.1	4	0.3	36	2.6
55-59	997	100.0	951	95.4	2	0.2	44	4.4
60-64	825	100.0	753	91.3	13	1.6	59	7.2
65+	2,035	100.0	1,603	78.8	6	0.3	426	20.9
Female								
Total	27,020	100.0	21,289	78.8	327	1.2	5,404	20.0
15-19	4,412	100.0	2,072	47.0	48	1.1	2,292	51.9
20-24	3,775	100.0	2,775	73.5	115	3.0	885	23.4
25-29	3,515	100.0	3,053	86.9	70	2.0	392	11.2
30-34	2,996	100.0	2,771	92.5	30	1.0	195	6.5
35-39	2,383	100.0	2,215	93.0	22	0.9	146	6.1
40-44	2,001	100.0	1,918	95.9	13	0.6	70	3.5
45-49	1,582	100.0	1,513	95.6	0	0.0	69	4.4
50-54	1,543	100.0	1,455	94.3	6	0.4	82	5.3
55-59	898	100.0	841	93.7	0	0.0	57	6.3
60-64	862	100.0	756	87.7	19	2.2	87	10.1
65+	3,053	100.0	1,920	62.9	4	0.1	1,129	37.0

Source: Ghana Statistical Service, 2010 Population and Housing Census

The proportional distribution of activity status by age, illustrates the distinction between age-based dependency and economic dependency. The economic dependency distinguishes the economically active population from non-economically active population within the age based dependency.

For instance, in theory, the population age 15-64 years are expected to be economically active while those aged 0 – 14 and 65+ are expected to be economically non active and therefore economically dependent on the population age 15-64 years.

However, table 4.2 shows that 69.2 percent of the population aged 65+ are economically active (currently employed) when in theory they are supposed to be economically dependent on the population aged 15 – 64 years. Three reasons could account for such phenomenon;

1. The retirement benefits for the population 65+ is not sufficient to sustain them economically hence the need for continued economic activity in order to earn a decent livelihood.
2. The per capital income of the population aged 15- 64 years is not sufficient to fully cater for the economic needs of the total population.

3. Some of the self-employed of the economically active population decide to continue in economic activity after age 64 years for non-economic reasons.
4. The demand for some special skills not attractive to the youth that requires many years of experience are only found among the population 65+

Similarly, 16.5 percent of the population aged 15-64 years is economically non-active when they are expected to be economically active. The non-activity status of this group is mainly concentrated in the age group 15–19 years and 20-24 years who are non-active because they are mainly schooling. However the economic non-activity status of this group decreases with age. For instance, the proportion of the age group 15–19 years that is economically non active is 49.4 percent compared to 24.4 percent of the age group 20–24 years and 10.6 percent of age group 25–29 years.

4.3 Occupation

Occupation refers to the actual work that a person does at his/her place of work whether in paid employment, unpaid family worker or self-employment. The occupations are classified according to the International Standard Classifications of Occupations (ISCO) but customized to Ghana's situation. Table 4.3 presents the distribution of the workforce by occupation and sex in the Tain district. It shows that out of the 42,079 employed persons in the district, 34,009 or 80.8 percent are skilled agricultural forestry and fishery workers, this is followed by a distant second by Service and sales workers. It employs 6.2 percent of persons 15 years and older. Craft and related trade workers ranks third but with only 5.6 percent of all occupations. Professionals comprise 2.6 percent of the employed and elementary occupations make up 1.8 percent. Interestingly, except skilled agricultural, forestry and fishery, craft and related trades workers and Service and sales workers each of all the remaining occupations contributed less than 5 percent of the workforce.

There are significant variations between the sexes in terms of occupations. For example, although more males (83.5%) than females (78.2%) are skilled agricultural, forestry and fishery workers, Service and sales workers is dominated by females. Significantly the female percentage engaged as Service and sales workers (9.9%) is about four times higher than the proportion for males (2.4%).

Females recorded 0.9 percent in managerial roles compared to 0.7 percent for males. A similar trend is found in elementary occupations with females (1.8%) against male (1.7%). Male dominance is widely seen as professionals (3.3%) compared to 1.8 percent females. Males also dominate in plant and machine operators and assemblers (2.4%) and technicians and associate professionals (0.7%) as against females (0.1%) and (0.4%) respectively.

In summary, males generally dominate all occupations except service and sales work in which a substantial proportion of females (9.9%) are employed against male (2.4%) and elementary occupations which has about the same proportion of females (1.8%) as males (1.7%).

Table 4.3: Employed population 15 years and older by occupation and sex

Occupation	Both sexes		Male		Female	
	Number	Percent	Number	Percent	Number	Percent
Total	42,079	100.0	20,790	100.0	21,289	100.0
Managers	323	0.8	141	0.7	182	0.9
Professionals	1,082	2.6	696	3.3	386	1.8
Technicians and associate professionals	218	0.5	143	0.7	75	0.4
Clerical support workers	221	0.5	132	0.6	89	0.4
Service and sales workers	2,613	6.2	498	2.4	2,115	9.9
Skilled agricultural forestry and fishery workers	34,009	80.8	17,364	83.5	16,645	78.2
Craft and related trades workers	2,357	5.6	955	4.6	1,402	6.6
Plant and machine operators and assemblers	511	1.2	500	2.4	11	0.1
Elementary occupations	739	1.8	356	1.7	383	1.8
Other occupations	6	0.0	5	0.0	1	0.0

Source: Ghana Statistical Service, 2010 Population and Housing Census

4.4 Industry of employment

Industry referred to the type of product produced or service rendered at the respondent's workplace.

Table 4.4 shows employed population 15 years and older by industry and sex. Out of a total population of 42,079 who are employed in the district, 79.4 percent are in the Agriculture forestry and fishing industry while 5.1 percent are in wholesale and retail industry (i.e. repair of motor vehicles and motorcycles). 3.9 percent of the employed population are in the manufacturing industry. These three activities, together, make up 88.4 percent of the industrial activities in the district.

The table further indicates that, about 1.8 percent of the employed population is in each of accommodation and food Service activities industry with other activities of extraterritorial organizations and bodies being the least.

The 2010 population and housing census revealed that there were more males employed (82.3%) in the Agriculture, Forestry and Fishing industry compared to females (76.5%).

The district pattern is generally replicated among the sexes, except that the proportions differ. For example, the proportion in Agriculture, forestry and fishing is high for both males (82.3%) and females (76.5%) followed by wholesale and retail trade in which the proportion for females (7.0%) is twice that for males (3.2%).

Table 4.4: Employed population 15 years and older by industry and sex

Industry	Both sexes		Male		Female	
	Number	Percent	Number	Percent	Number	Percent
Total	42,079	100.0	20,790	100.0	21,289	100.0
Agriculture forestry and fishing	33,395	79.4	17,113	82.3	16,282	76.5
Mining and quarrying	12	0.0	9	0.0	3	0.0
Manufacturing	1,650	3.9	480	2.3	1,170	5.5
Electricity gas steam and air conditioning supply	14	0.0	13	0.1	1	0.0
Water supply; sewerage waste management and remediation activities	30	0.1	11	0.1	19	0.1
Construction	452	1.1	419	2.0	33	0.2
Wholesale and retail, repair of motor vehicles and motorcycles	2,159	5.1	663	3.2	1,496	7.0
Transportation and storage	415	1.0	403	1.9	12	0.1
Accommodation and food service activities	744	1.8	75	0.4	669	3.1
Information and communication	18	0.0	9	0.0	9	0.0
Financial and insurance activities	103	0.2	60	0.3	43	0.2
Real estate activities	0	0.0	0	0.0	0	0.0
Professional scientific and technical activities	176	0.4	54	0.3	122	0.6
Administrative and support service activities	42	0.1	31	0.1	11	0.1
Public administration and defence; compulsory social security	205	0.5	157	0.8	48	0.2
Education	964	2.3	643	3.1	321	1.5
Human health and social work activities	211	0.5	94	0.5	117	0.5
Arts entertainment and recreation	25	0.1	25	0.1	0	0.0
Other service activities	895	2.1	245	1.2	650	3.1
Activities of households as employers; undifferentiated goods - and services - producing activities of households for own use	569	1.4	286	1.4	283	1.3
Activities of extraterritorial organizations and bodies	0	0.0	0	0	0	0.0

Source: Ghana Statistical Service, 2010 Population and Housing Census

4.5 Employment status

This refers to the status of a person in the establishment where he/she currently works or previously worked.

Tain District has a total population of 42,079 persons 15 years and older who are employed. Amongst those employed, the majority (67.1%) are self-employed without employees. About one fifth (22.7%) are contributing to family work and 5.5 percent are employees. Less than two percent (1.7%) are self-employed with employees. Casual workers and apprentices contribute 2.2 percent and 0.5 percent are employed as house helps.

Table 4.5: Employed population 15 years and older by employment status and sex

Employment Status	Both sexes		Male		Female	
	Number	Percent	Number	Percent	Number	Percent
Total	42,079	100.0	20,790	100.0	21,289	100.0
Employee	2,304	5.5	1,555	7.5	749	3.5
Self-employed without employee(s)	28,236	67.1	14,192	68.3	14,044	66.0
Self-employed with employee(s)	715	1.7	377	1.8	338	1.6
Casual worker	434	1.0	351	1.7	83	0.4
Contributing family worker	9,554	22.7	4,057	19.5	5,497	25.8
Apprentice	516	1.2	113	0.5	403	1.9
Domestic employee (House help)	231	0.5	110	0.5	121	0.6
Other	89	0.2	35	0.2	54	0.3

Source: Ghana Statistical Service, 2010 Population and Housing Census

In terms of sex variations, a greater percentage of the population for both sexes are self-employed without employee(s), that is males 68.3 percent and females 66.0 percent.

Contributing family workers form the second predominant group with 19.5 percent of the males employed falling within this category whereas the percentage of females that fall within this category is 25.8 percent. An almost equal proportion of males (1.8%) as females (1.6%) are self-employed with employee(s). The proportion of males who are employees (7.5%) is twice higher compared to female employees (3.5%). Casual workers are mostly males (1.7%) compared to females (0.4%) and apprentices are mostly females (1.9%) compared to males (0.5%). Domestic employees (House helps) remain the least employment status engaging an equal proportion of both sexes.

4.6 Employment Sector

This refers to the sector in which a person works. The employment sectors covered in the 2010 census were public, private formal, private informal, semi-public/parastatal, NGOs and international organizations.

Table 4.6 shows the distribution of persons 15 years and older by sector of employment and sex. It indicates that the informal private sector is by far the largest employer of employed persons in the district (95.2%), followed by public (government) sector (3.1%). Less than 2 percent of employees are in private formal sector (1.4%), NGOs (0.3%) or other international organization (0.0). A similar pattern is observed for the sexes, with more males than females employed across almost all the sectors except the private informal sector where the proportion is slightly higher for females (96.6%) compared to the males (93.6%).

The validity of the repeated statement that the private sector in Ghana is the engine of growth is demonstrated in the district. With over ninety percent of the working population, male and female, in the private informal sector, the district needs to give priority attention to actually transforming the private sector into the engine of growth and not just a subsistence agricultural sector. The production, management, packaging, marketing and distribution issues related to the private sector need priority attention in order to accelerate this engine of growth.

Table 4.6: Employed population 15 years and older by employment sector and sex

Employment Sector	Both sexes		Male		Female	
	Number	Percent	Number	Percent	Number	Percent
Total	42,079	100.0	20,790	100.0	21,289	100.0
Public (Government)	1,307	3.1	841	4.0	466	2.2
Private Formal	597	1.4	415	2.0	182	0.9
Private Informal	40,042	95.2	19,467	93.6	20,575	96.6
Semi-Public/Parastatal	9	0.0	6	0.0	3	0.0
NGOs (Local and International)	120	0.3	59	0.3	61	0.3
Other International Organizations	4	0.0	2	0.0	2	0.0

Source: Ghana Statistical Service, 2010 Population and Housing Census

CHAPTER FIVE

INFORMATION COMMUNICATION TECHNOLOGY

5.1 Introduction

It is widely accepted that Information Communications Technology (ICT) plays an important role in every sphere of life. Access to ICT is essential in increasing people’s knowledge and awareness of what is taking place around them even at the global level. The world is now linked together with advanced communication technology and access to information is through the computer, mobile phone and internet facilities which are fast becoming essential part of daily life.

Moreover, Information Communications Technology (ICT) is recognized as an important knowledge-based tool necessary for socioeconomic development. This role of ICT in an emerging economy such as Ghana’s, has been widely recognized even though not fully experienced at the district levels. The recognition is reflected in actions such as the development and deployment of a national ICT infrastructure, institutional and regulatory framework for managing the sector, promoting the use of ICT in all sectors of the economy, implementing e-governance in all government institutions and the construction of a National Data Centre as well as Regional Innovation Centres. The objective of this chapter is to analyze the extent of individual ownership of mobile phones and the use of internet among the population aged 12 years and older, and the ownership of fixed telephone lines and desktops/laptop computers by a member of the household.

5.2 Ownership of Mobile phones

Table 5.1 shows that, out of the total population of 59,021 persons who are 12 years and older in the district, only 20,712 representing 35.1 percent have their own mobile phones. When males and females who are 12 years and older are compared, the data show that about two out of every five (40.5%) of the total male population of 28,943 own mobile phones, compared with about thirty percent (29.9%) of the total female population of 30,078.

Table 5.1: Population 12 years and older by mobile phone ownership and Sex

Sex	Population 12 years and older		Population having mobile phone	
	Number	Percent	Number	Percent
Total	59,021	100.0	20,712	35.1
Male	28,943	100.0	11,720	40.5
Female	30,078	100.0	8,992	29.9

Source: Ghana Statistical Service, 2010 Population and Housing Census

5.3 Use of internet

Table 5.2 shows that the proportion using the internet is very far smaller than the proportion using mobile phones. Out of the total population of persons who are 12 years and older (59,021 persons) in the district, only 611 persons, representing 1.0 percent use internet facility. Sex variations do not present a good picture about internet usage in the district. Amongst the 611 persons who use internet facility in the district, 468 or more than three out of every four (76.6%) are males.

Out of the total population 12 years and older, only 1.6 percent of males use internet, compared with 0.5 percent of the female population who use internet facility.

Table 5.2: Population 12 years and older by internet facility usage, and sex

Sex	Population 12 years and older		Population using internet facility	
	Number	Percent	Number	Percent
Total	59,021	100.0	611	1.0
Male	28,943	100.0	468	1.6
Female	30,078	100.0	143	0.5

Source: Ghana Statistical Service, 2010 Population and Housing Census

5.4 Household Ownership of Desktop or Laptop computer

It goes without saying that ownership of desktop and laptop computers by households is important in enhancing business transactions, research, study and the use of internet facilities. Table 5.3 also gives information on household ownership of desktop/laptop computers within the Tain district. From the table only a few households (2.4%) owned desktop/laptop computers. The proportion of male headed households that own desktop/laptop computers (2.7%) is higher than for female headed households (1.9%). Majority of those who owned desktop/laptop may be found in the urban area. This could be attributed to the fact that as at 2010 most of the communities within the district do not have access to electricity, hence a discouraging factor to households who want to acquire computers.

Table 5.3: Households having desktop/laptop computers and sex of head

Sex	Households		Households having desktop/laptop computers	
	Number	Percent	Number	Percent
Total	16,313	100.0	399	2.4
Male	10,448	100.0	285	2.7
Female	5,865	100.0	114	1.9

Source: Ghana Statistical Service, 2010 Population and Housing Census

CHAPTER SIX

DISABILITY

6.1 Introduction

Persons with disabilities (PWDs) face a wide range of life challenges for the reason that disability in whatever form or type reduces an individual's ability to function to his/her full potentials.

The Ghana Statistical Service (2012) defines persons with disability as those who were unable to or were restricted in the performance of specific tasks/ activities due to loss of function of some part of the body as a result of impairment or malformation.

Generally, persons with disability are marginalized and suffer from discrimination on account of their disability status. They are mostly regarded as less productive and not capable of contributing to development compared to their non-disabled counterparts. Accordingly, they are often seen as the burden on society in general and their families in particular.

Their unfortunate circumstances are often viewed as a curse or punishment. Furthermore, according to the summary World Report on Disability (World Health Organization 2011), persons with disability have poorer health status, lower education achievement, less economic participation and higher proportion of poverty than people without disabilities.

The objective of this chapter is to analyze the data on persons with disabilities. Information was collected on persons with the following disabilities:

- Visual/ sight impairment;
- Hearing impairment;
- Mental retardation;
- Emotional or behavioural disorders, and
- Other physical challenges.

6.2 Population with disability

Table 6.1: shows the population with disability by locality type and sex. The 2010 population and housing census (PHC) indicates that out of a total of 88,104 people in the district, 86,305 or 98 percent are without disability and 1,799 or two percent are with disability.

In terms of disability by sex, not much difference is observed; 2.1 percent of females and 2.0 percent males. The proportion of PWDs among the rural population is 2.3 percent which is slightly higher than in the urban areas (1.8%).

Table 6.1: Population with disability

Disability type	Both sexes		Male		Female	
	Number	percent	Number	percent	Number	percent
All Localities						
Total	88,104	100.0	43,508	100.0	44,596	100.0
No disability	86,305	98.0	42,630	98.0	43,675	97.9
With a disability	1,799	2.0	878	2.0	921	2.1
Sight	629	35.0	319	36.3	310	33.7
Hearing	366	20.3	156	17.8	210	22.8
Speech	309	17.2	158	18.0	151	16.4
Physical	564	31.4	252	28.7	312	33.9
Intellectual	275	15.3	131	14.9	144	15.6
Emotional	217	12.1	117	13.3	100	10.9
Other	171	9.5	98	11.2	73	7.9
Urban						
Total	45,367	100.0	21,784	100.0	23,583	100.0
No disability	44,532	98.2	21,409	98.3	23,123	98.0
With a disability	835	1.8	375	1.7	460	2.0
Sight	280	33.5	119	31.7	161	35.0
Hearing	161	19.3	69	18.4	92	20.0
Speech	126	15.1	68	18.1	58	12.6
Physical	300	35.9	118	31.5	182	39.6
Intellectual	133	15.9	68	18.1	65	14.1
Emotional	94	11.3	47	12.5	47	10.2
Other	76	9.1	43	11.5	33	7.2
Rural						
Total	42,737	100.0	21,724	100.0	21,013	100.0
No disability	41,773	97.7	21,221	97.7	20,552	97.8
With a disability	964	2.3	503	2.3	461	2.2
Sight	349	36.2	200	39.8	149	32.3
Hearing	205	21.3	87	17.3	118	25.6
Speech	183	19.0	90	17.9	93	20.2
Physical	264	27.4	134	26.6	130	28.2
Intellectual	142	14.7	63	12.5	79	17.1
Emotional	123	12.8	70	13.9	53	11.5
Other	95	9.9	55	10.9	40	8.7

Source: Ghana Statistical Service, 2010 Population and Housing Census

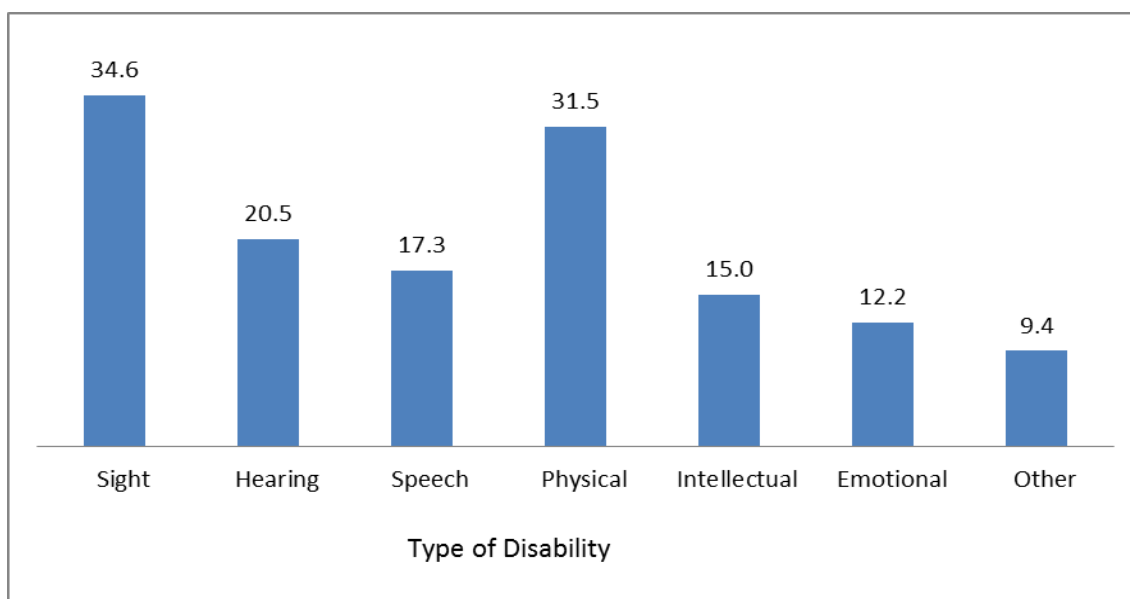
6.3 Type of Disability

Types of disabilities recorded in the census include sight, hearing, speech, physical, intellectual and emotional. Disability cases can be multiple, that is, one person can have more than one type of disability. According to the Ghana statistical service National Report on Disability (2012) it has been found that nationally about two out of every five of the population with disability (38.3%) have more than one type of disability condition. About the same proportion of males (38.2%) and females (38.6) have multiple disabilities.

In the Tain District, 1,799 of the population reported 2,517 disabilities yielding an average of 1.4 disabilities per person. That is, about 40.7 percent have more than one form of disability.

Figure 6.1 describes the proportional distribution of the number of times a specific disability was reported by an individual in the district. The figure reveals that sight impairment is the main types of disability from which most of the disabled suffer, accounting for 34.6 percent in the district. About the same proportion (31.5%) of PWDs suffer from physical disabilities. Hearing disability ranks third accounting for 20.5 percent followed by speech defect (17.3%).

Figure 6.1: Distribution of Disability Type



Source: Ghana Statistical Service, 2010 Population and Housing Census

Table 6.1 provides information on the distribution of types of disability by sex. The data shows that although the overall proportion of males with disabilities (2.0%) is the same as that of females (2.1%), there are significant differences between males and females in the magnitude of the proportions for the various types of disabilities in the district. For example, there are slightly more males with disabilities in sight (36.1%), speech (18.3%), emotional (13.6%) and other forms of disability (10.9%) as compared to the females with the same disabilities. However, there are more females with physical (33.8%) and hearing (22.9%) disabilities.

6.4 Distribution by locality type

Table 6.1 also describes the types of disability according to locality. The data indicates that although overall there are more PWDs in the rural areas (2.3%) than in the urban areas (1.8%), the distribution of the various types of disability do not show a consistent pattern of being higher in the rural areas. For example, whereas sight challenges are higher among the rural dwellers (35.5%), urban dwellers reported the highest proportion of physical impairment (36.0%). Similarly, reported hearing impairment is higher in the rural areas (21.2%) than in the urban areas (19.7%)

6.5 Disability and Economic Activity

Table 6.2 shows the distribution of PWDs by economic activity status and sex. In the district, out of the 52,544, persons aged 15 years and older in, 1,441 or 2.7 percent are PWDs, of which about 56.1 percent are employed, while less than one percent are unemployed. About 43.0 percent of the PWDs are economically not active. This translates to about 25 percentage points more PWD being economically not active compared to the 18.2 percent persons with no disability. Less than fifty percent of PWDs with physical (37.5%) and intellectual (47.3%) disabilities are employed. The rest of the disability categories reported above 50 percent in employed category.

However, as indicated in the introduction of this chapter, generally, persons with disability are marginalized and suffer discrimination on account of their disability status. They are usually regarded as less productive and not capable of contributing to development compared to their non-disabled counterparts.

Table 6.2 further indicates that whereas 80.8 percent of those 15 years and older and without any disability are employed, less than sixty percent of those with some disability are employed (56.1%).

With respect to differentials by sex, whereas 82.0 percent of males with no disability are employed, the proportion for those with disability is only 63.4 percent. Similarly, for females, although 79.6 percent with no disability are employed, less than fifty percent with disability are employed (49.3%).

The unemployed according to the PHC comprises all persons who during the reference period were “without work and had no fixed jobs, currently available to work, seeking for work by taking specific steps to look for work”. On the basis of this definition, fewer PWDs are likely to be seeking for work or currently available for work compared with those with no disability. About one percent of the PWDs (0.8%) are reported as unemployed compared with 1.1 percent of persons with no disability.

Unemployment among women with disability (1.1%) is higher than the male counterparts (0.6%). According to the 2010 PHC an economically not active person, did not work during the reference period and was not looking for work. He or she may be a home maker, a full time student, retired person disabled and unable to work because of old age or ill health. On the basis of this definition it is expected that a substantial number of the disabled fall into the economically not active population group. The percentage of PWDs who are economically not active (43.0%) therefore is significantly higher than those with no disability (18.2%). In the district, about one half of the female PWDs (49.6%) are economically not active compared with about one third of the male PWDs (36.1%).

Table 6.2 further describes the economic activity status of PWDs with specific disabilities. It also describes the economic activity status of male and female PWDs with different disabilities. In the district, disabled persons with physical (37.5%) and/or intellectual problems (47.3%) have the lowest employment rates whereas those with hearing (69.0%), speech disability (68.7%) and other forms of disability (60.4%) have the highest employment rates. The disabilities associated with higher registered unemployment (i.e. currently available to work, seeking for work by taking specific steps to look for work) are speech (2.0%), intellectual (2.0%) and emotional (1.7%). The proportion of the population with no disability and economically, not active is 18.2 percent. Among those with disability the proportion is about two in five (43.0%). The proportions range from 29.3 percent to 61.4 percent for the different types of disabilities. About sixty-one percent of the economically not active have physical disability, followed by 50.7 percent with intellectual disorders, 46.0 percent have emotional disorders and 42.2 percent have visual/sight problems.

Among females with disability, physical (31.6%), emotional disability (46.2%) and intellectual (46.7%) offer the least chance of employment. Females with speech problems (61.7%) have the highest probability of being employed and this compares with the 79.6 percent of the population with no disability who are employed. The probability of being employed is highest for males with hearing (82.9%) and speech problems (75.0%). Only 48.0 percent of males with intellectual disability and 45.1 percent with physical disability are

employed compared with an employment rate of 82.0 percent among the male population with no disability.

The unemployment rate, however, is more or less the same among the population with no disability (males 0.9% and females 1.2%) compared with those with some disability (males 0.6% and females 1.1%). Among the population with disability however, the type of one's disability may affect his or her capacity to work and thus the quest for job.

Table 6.2: Persons 15 years and older with disability by economic activity status and sex

Sex	All status		Employed		Unemployed		Economically not active	
	Number	Percent	Number	Percent	Number	Percent	Number	Percent
Both Sexes								
Total	52,544	100.0	42,079	80.1	566	1.1	9,899	18.8
No disability	51,103	100.0	41,270	80.8	554	1.1	9,279	18.2
With a disability	1,441	100.0	809	56.1	12	0.8	620	43.0
Sight	505	100.0	289	57.2	3	0.6	213	42.2
Hearing	252	100.0	174	69.0	1	0.4	77	30.6
Speech	198	100.0	136	68.7	4	2.0	58	29.3
Physical	485	100.0	182	37.5	5	1.0	298	61.4
Intellectual	205	100.0	97	47.3	4	2.0	104	50.7
Emotional	176	100.0	92	52.3	3	1.7	81	46.0
Other	134	100.0	81	60.4	0	0.0	53	39.6
Male								
Total	25,524	100.0	20,790	81.5	239	0.9	4,495	17.6
No disability	24,825	100.0	20,347	82.0	235	0.9	4,243	17.1
With a disability	699	100.0	443	63.4	4	0.6	252	36.1
Sight	261	100.0	172	65.9	1	0.4	88	33.7
Hearing	105	100.0	87	82.9	0	0.0	18	17.1
Speech	104	100.0	78	75.0	1	1.0	25	24.0
Physical	213	100.0	96	45.1	1	0.5	116	54.5
Intellectual	98	100.0	47	48.0	1	1.0	50	51.0
Emotional	98	100.0	56	57.1	1	1.0	41	41.8
Other	80	100.0	50	62.5	0	0.0	30	37.5
Female								
Total	27,020	100.0	21,289	78.8	327	1.2	5,404	20.0
No disability	26,278	100.0	20,923	79.6	319	1.2	5,036	19.2
With a disability	742	100.0	366	49.3	8	1.1	368	49.6
Sight	244	100.0	117	48.0	2	0.8	125	51.2
Hearing	147	100.0	87	59.2	1	0.7	59	40.1
Speech	94	100.0	58	61.7	3	3.2	33	35.1
Physical	272	100.0	86	31.6	4	1.5	182	66.9
Intellectual	107	100.0	50	46.7	3	2.8	54	50.5
Emotional	78	100.0	36	46.2	2	2.6	40	51.3
Other	54	100.0	31	57.4	0	0.0	23	42.6

Source: Ghana Statistical Service, 2010 Population and Housing Census

Among males, with disability in the district, those with physical disability (1.0%), speech (1.0%) and emotional problems (1.0%) are more likely to be seeking for work. For females, those with speech (3.2%), intellectual (2.8%) and emotional (2.6%) are more likely to be available to work and therefore have been counted as unemployed

6.6 Disability and Education

The educational status among the PWDs in the district is generally very low .The total population 3 years and older in the district is 81,083. Out of this number, 1,738 representing 2.1 percent are PWDs as shown in table 6.3 and Appendix 1. Out of the total PWDs population of the district 3 years and above, more than half (56.2%) have never been to school. About three in ten (35.0%) have basic school education whereas 5.3 percent have secondary and higher education.

Table 6.3 confirms the lower educational achievement of persons with disability. Whereas only 30.7 percent of those with no disability have never attended school, 56.2 percent of those with disability have never attended school. The disadvantage situation of the disabled is reflected at the various levels of education. About half percent (50.70%) of those with no disability are attending in basic school compared to 35.0 percent of those with disability. In relation to the different disability types and level of education, there is no evidence of association between the type of disability and utilization of educational facilities. This is because the difference among the disability type and those never attended school is not much. The picture is similar for the basic and secondary and higher school attendance.

Table 6.3: Population 3 years and older by sex, disability type and level of education

Sex/Disability type	Number					Percent				
	Total	Never attended	Pre-school	Basic	Sec./SSS/SHS and higher	Total	Never attended	Pre-school	Basic	Sec./SSS/SHS and higher
Both Sexes										
Total	81,083	25,300	7,690	40,832	7261	100.0	31.2	9.5	50.4	9.0
No disability	79,345	24,323	7,629	40,224	7169	100.0	30.7	9.6	50.7	9.0
With a disability	1,738	977	61	608	92	100.0	56.2	3.5	35.0	5.3
Sight	608	332	26	214	36	100.0	54.6	4.3	35.2	5.9
Hearing	347	193	21	115	18	100.0	55.6	6.1	33.1	5.2
Speech	298	169	18	100	11	100.0	56.7	6.0	33.6	3.7
Physical	548	332	13	181	22	100.0	60.6	2.4	33.0	4.0
Intellectual	264	132	10	113	9	100.0	50.0	3.8	42.8	3.4
Emotional	209	118	4	82	5	100.0	56.5	1.9	39.2	2.4
Other	159	88	1	59	11	100.0	55.3	0.6	37.1	6.9
Male										
Total	40,009	10,180	3,831	21,301	4697	100.0	25.4	9.6	53.2	11.7
No disability	39,165	9,768	3,803	20,958	4636	100.0	24.9	9.7	53.5	11.8
With a disability	844	412	28	343	61	100.0	48.8	3.3	40.6	7.2
Sight	309	142	13	131	23	100.0	46.0	4.2	42.4	7.4
Hearing	145	68	8	54	15	100.0	46.9	5.5	37.2	10.3
Speech	153	86	7	54	6	100.0	56.2	4.6	35.3	3.9
Physical	243	127	7	96	13	100.0	52.3	2.9	39.5	5.3
Intellectual	125	56	5	59	5	100.0	44.8	4.0	47.2	4.0
Emotional	111	58	3	47	3	100.0	52.3	2.7	42.3	2.7
Other	90	46	1	34	9	100.0	51.1	1.1	37.8	10.0
Female										
Total	41,074	15,120	3,859	19,531	2564	100.0	36.8	9.4	47.6	6.2
No disability	40,180	14,555	3,826	19,266	2533	100.0	36.2	9.5	47.9	6.3
With a disability	894	565	33	265	31	100.0	63.2	3.7	29.6	3.5
Sight	299	190	13	83	13	100.0	63.5	4.3	27.8	4.3
Hearing	202	125	13	61	3	100.0	61.9	6.4	30.2	1.5
Speech	145	83	11	46	5	100.0	57.2	7.6	31.7	3.4
Physical	305	205	6	85	9	100.0	67.2	2.0	27.9	3.0
Intellectual	139	76	5	54	4	100.0	54.7	3.6	38.8	2.9
Emotional	98	60	1	35	2	100.0	61.2	1.0	35.7	2.0
Other	69	42	0	25	2	100.0	60.9	0.0	36.2	2.9

Source: Ghana Statistical Service, 2010 Population and Housing Census

CHAPTER SEVEN

AGRICULTURAL ACTIVITIES

7.1 Introduction

Agriculture plays a vital role in the socio-economic development of the district and the entire Brong Ahafo Region. The district's economy is mainly rural and dominated by the agricultural sector. The key agricultural sub-sectors include crops, livestock, fisheries, agro forestry and non-traditional commodities. The farming practices in the district include mono-cropping, mixed cropping and mixed farming. This chapter presents analysis of data on the agricultural activities in the district, with a main focus on households in agriculture and types of farming.

7.2 Households in Agriculture

A household is classified as an agricultural household if at least one of its members engages in agricultural production even if not earning from agricultural activity alone.

Table 7.1 provides information on the total number of households engaged in agricultural activities by locality. The Table indicates that out of 16,313 households in the district, 14,323 representing 87.8 percent are engaged in agricultural activities.

More than three quarters (83.7%) of the urban households in the district are engaged in agriculture and about ninety-two percent (91.7%) of the rural households are also engaged in agriculture. This indicates that the main pre-occupation of the district is agriculture. There may therefore be the need to diversify the economy and expand the non-agricultural sectors in the district to create and sustain more employment.

7.3 Types of Farming Activities

Table 7.1 also shows the households by types of agricultural activities and locality in the district. The activities are crop farming, tree planting, livestock rearing and fish farming. From the table, 14,323 agricultural households in the district are engaged in various agricultural activities. There are, however, 19,804 agricultural activities reported. This implies that some households are engaged in more than one activity. On the whole each household undertakes an average of 1.4 different agricultural activities.

Crop farming is nearly universal in all agricultural households (98.8%). This is not surprising for a predominantly rural district where non-agricultural activities are minimal. The second most prominent activity, engaged in by 37.6 percent of agricultural households, is livestock rearing. Fish farming and tree growing are nearly non-existent in the district with only 0.1 percent and 1.8 percent of households engaged in each respectively.

With reference to urban/rural communities, a similar pattern is observed with the two traditional agricultural activities of crop farming and livestock rearing dominating. Almost all agricultural households in urban (98.8%) and rural (98.8%) communities are engaged in crop farming. More households in rural (47.1%) than urban areas (26.9%) are into livestock rearing. The non-traditional activities of tree planting and fish farming are negligible in both urban and rural agricultural households. Almost twice as many of the few households in tree planting are in the urban areas (2.1%) compared with the rural areas (1.5%). The proportion

of households engaged in fish farming is about the same among both urban and rural dwellers (0.0% and 0.1% respectively).

Table 7.1: Agricultural activity of household members by locality

	Total		Urban		Rural	
	Number	Percent	Number	Percent	Number	Percent
Total Households	16,313	100.0	7,968	100.0	8,345	100.0
Households engages in						
Agriculture	14,323	87.8	6,671	83.7	7,652	91.7
Crop Farming	14,150	98.8	6,589	98.8	7,561	98.8
Tree Planting	259	1.8	141	2.1	118	1.5
Livestock Rearing	5,388	37.6	1,795	26.9	3,593	47.1
Fish Farming	7	0.1	3	0.0	4	0.1

Source: Ghana Statistical Service, 2010 Population and Housing Census

7.4 Types Livestock, and Other Animals Reared

Livestock rearing is the second most important agricultural activity in Tain District. It occurs throughout the district, and in both rural and urban areas. The livestock can be classified into five groups: ruminants (goats, sheep and cattle), birds (chicken, guinea fowl, ostrich, turkey, ducks and doves), pigs, non-traditional livestock (grass-cutter, rabbit, snail, beehives and silkworm) and fish (in-land, marine and fish farms). Collectively, 153,134 livestock are reared by 8,699 keepers with an overall average of 18 animals per keeper. These livestock consist of 44,359 ruminants (cattle, sheep, goats) representing 29.0 percent of the total livestock, 103,685 birds (chicken, dove, duck, guinea fowl, ostrich, turkey) representing 67.7 percent, 2,779 swine representing 1.8 percent and 848 group of non-traditional livestock (grass cutter, rabbit, snail, silkworm, beehives) accounting for 0.6 percent of livestock in the district. Also, reported are 1,340 of farmed fish, representing 0.9 percent, 34 baskets of fish (inland and marine) accounting for 0.0 percent and 89 “other types” representing 0.1 percent.

Chicken with 98,221 or 64.1 percent of all animals, is the most important and is reared by 4,008 or 46.1 percent of all keepers. The average number per keeper is 25. Goats follow in the second position (28,783 or 18.8 percent) of the animals. Goats are reared by 2,626 or 30.2 percent of keepers. The average number per keeper is 11 goats. The third significant animal reared is sheep (14,049 or 9.2 percent); 1,367 or 15.7 percent of the keepers are into rearing sheep with an average of 10 sheep per keeper.

Table 7.2: Distribution of livestock and keepers

Livestock/other animals	Animals		Keepers		Average Animal per Keeper
	Number	Percent	Number	Percent	
All livestock	153,134	100.0	8,699	100.0	18
Beehives	100	0.1	10	0.1	10
Cattle	1,527	1.0	96	1.1	16
Chicken	98,221	64.1	4,008	46.1	25
Dove	242	0.2	15	0.2	16
Duck	1,490	1.0	82	0.9	18
Goat	28,783	18.8	2,626	30.2	11
Grass-cutter	192	0.1	17	0.2	11
Guinea fowl	2,947	1.9	158	1.8	19
Ostrich	595	0.4	23	0.3	26
Pig	2,779	1.8	227	2.6	12
Rabbit	160	0.1	20	0.2	8
Sheep	14,049	9.2	1,367	15.7	10
Silk worm	82	0.1	11	0.1	7
Snail	314	0.2	7	0.1	45
Turkey	190	0.1	17	0.2	11
Other	89	0.1	8	0.1	11
Fish farming	1,340	0.9	4	0.0	335
Inland fishing	14	0.0	2	0.0	7
Marine fishing	20	0.0	1	0.0	20

Source: Ghana Statistical Service, 2010 Population and Housing Census

CHAPTER EIGHT

HOUSING CONDITIONS

8.1 Introduction

It has long been established that man's most basic needs are food, clothing and shelter. Housing is both a social good, providing core security for households, neighborhoods, societies and communities and an economic good, stimulating growth and development.

The information on housing serve as a basis for planning on a variety of housing and human settlement programmes and policies, evaluation and monitoring of housing conditions and needs of the population.

Good housing conditions consisting of adequate sanitation facilities, safe water supplies and drainage systems among others, is an essential requirement for the survival and development of children and for the welfare of men and women. The living environment in many communities in the district is inadequate. Households should have toilets or drains for safe disposal of human excreta and other harmful substances that must not be exposed to human contact.

People in households have varied living arrangements, along cultural and ethnic lines and according to housing conditions. This chapter provides information on types of housing and housing facilities in the Tain District.

In this chapter, stock of houses, facilities and amenities of houses in the Region are analyzed at the Regional and at the District levels. This chapter provides the findings on housing and housing conditions in the Tain District in 2010. It examines the housing stock, type of dwelling, room occupancy, holding and tenancy, lighting and cooking facilities, bathing and toilet facilities, waste disposal and source of water for domestic use among others.

8.2 Housing Stock

Table 8.1 presents information on housing stock and households in the Tain District. The 2010 PHC reveals that the total population in Brong Ahofo Region is 2,310,983, representing 9.4 percent of Ghana's population (24,658,823). Tain district has a population of 88,104 which is 3.8 percent of the region's population. The total household population of the district stands at 87,245 or 3.9 percent of the region's figure of 2,265,458. The housing stock available in the region is 331,967 or about ten percent (9.8%) of the national figure of 3,392,745. The Tain District has a total of 12,283 stock of houses representing 3.7 percent of the regional stock and 16,313 households or 2.1 percent of the region's 490,515 households. A majority of the housing stock (58.8%) and households (50.5%) are in the rural areas of the district. The average number of persons per house in the district is 7.2. This is higher than the regional average of 7.0 and lower than the national average of 7.3. Again, the average household size in the district stands at 5.3. This is higher than the regional household size of 4.7.

Although the rural areas contain almost sixty percent (58.8%) of the district's housing stock and fifty percent of households, the population per house (8.8) and the average households per house (1.6) are higher in the urban areas. There is also no significant difference between

the urban (5.6) and the rural (5.1) average household sizes. This implies a stronger pressure on urban housing stock and facilities.

However, what can be considered an ideal population per house depends on the circumstance of the environment being considered and the level of development of the area. Factors including space, sanitary facilities, number of rooms and material used for construction may determine adequacy or otherwise. Nonetheless, the large population per house and number of households per house maybe indicative of inadequate housing stock resulting in, among other challenges, scarcity of sleeping rooms.

Table 8.1: Stock of houses and households by type of locality

Categories	Total country	Region	District	Urban	Rural
Total population	24,658,823	2,310,983	88,104	45,367	42,737
Total household population	24,076,327	2,265,458	87,245	44,894	42,351
Number of houses	3,392,745	331,967	12,283	5,059	7,224
Number of households	5,467,054	490,515	16,313	8,082	8,231
Average households per house	1.6	1.5	1.3	1.6	1.1
Population per house	7.3	7	7.2	8.8	6
Average household size	4.5	4.7	5.3	5.6	5.1

Source: Ghana Statistical Service, 2010 Population and Housing Census

8.3 Type of Dwelling, Holding and Tenancy Arrangements

8.3.1 Type of dwelling

Table 8.2 shows the types of dwelling units used by households in the country, region and Tain District. The predominant type of dwelling unit in the district is compound house (rooms) accounting for 44.1 percent of the total number of dwellings. This is followed by separate house (37.2%) and Huts/Buildings (Same compound) (9.8%). Semi-detached houses rank a fourth (6.3%). About one percent (1.1%) of households live in make shift dwelling units such as tents, improvised homes (kiosk, containers, living quarters attached to office/shop and uncompleted buildings). This proportion is lower than the 1.8 percent for Brong Ahafo region and the 3.6 percent nation-wide.

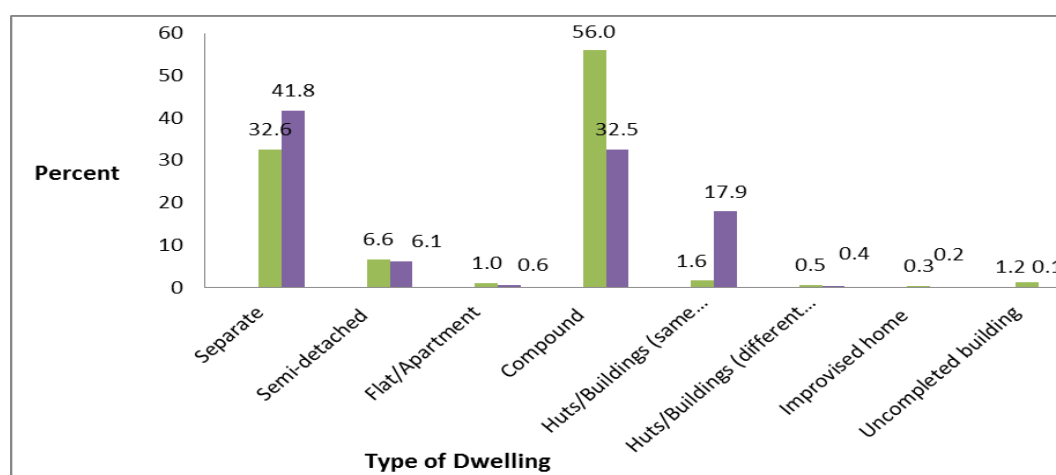
The rank order of the type of dwelling unit, which follows the district wide picture, is not influenced by the sex of the head of household, since for both male and female headed households, compound house (rooms) ranks first, followed by separate house with semi-detached houses coming fourth after Huts/Building (same compound). However, there are differences between male and female headed households in the size of the proportions for the type of dwelling unit occupied. For example, whereas 51.1 percent of female headed households occupy compound houses (rooms) the proportion for male headed households is 40.2 percent. Huts/Buildings (same compound), which is occupied by 12.8 percent of male headed households, is lower for females (4.5%). About the same proportion of male headed households as female headed households live in separate houses. However, a slightly lower proportion of male headed households (1.1%) compared with females (1.4%) live in make shift dwellings.

Table 8.2: Type of occupied dwelling unit by sex of household head and type of locality

Type of dwelling	Total country	Region	District					
			Total		Male headed	Female headed	Urban	Rural
			Number	Percent				
Total	5,467,054	490,515	16,319	100.0	100.0	100.0	100.0	100.0
Separate house	1,471,391	162,809	6,078	37.2	38.1	35.8	32.6	41.8
Semi-detached house	391,548	27,079	1,031	6.3	6.3	6.3	6.6	6.1
Flat/Apartment	256,355	11,331	133	0.8	0.9	0.6	1.0	0.6
Compound house (rooms)	2,942,147	256,130	7,202	44.1	40.2	51.1	56.0	32.5
Huts/Buildings (same compound)	170,957	20,955	1,601	9.8	12.8	4.5	1.6	17.9
Huts/Buildings (different compound)	36,410	3,245	72	0.4	0.5	0.3	0.5	0.4
Tent	10,343	871	23	0.1	0.2	0.1	0.1	0.2
Improvised home (kiosk/container, etc.)	90,934	2,393	42	0.3	0.3	0.2	0.3	0.2
Living quarters attached to office/shop	20,499	1,102	17	0.1	0.1	0.1	0.1	0.1
Uncompleted building	66,624	3,850	105	0.6	0.5	1.0	1.2	0.1
Other	9,846	750	15	0.1	0.1	0.1	0.0	0.2

Source: Ghana Statistical Service, 2010 Population and Housing Census

Figure 8.1 shows that the percentage of separate houses is higher in rural (41.8%) than urban localities (32.6%). With respect to compound houses, the situation is different. Rather, the percentage of compound houses is higher in urban areas (56.0%) than rural areas (32.5%). Also, the percentage of huts/buildings (same compound) is much higher in rural localities (17.9%) than urban localities (1.6%). The proportion of households who occupy make shift dwelling units such as Tent, Improvised home (kiosk/container etc.), Living quarters attached to office/shop and Uncompleted building is twice as high in urban compared to rural localities (1.7% versus 0.8%).

Figure 8.1: Type of dwelling by type of locality

Source: Ghana Statistical Service, 2010 Population and Housing Census

8.3.2 Ownership status

Table 8.3 shows the ownership status of dwelling units by sex of household head in the district. It was found out that almost sixty percent (59.5%) of all households live in houses owned by a household member and 24.4 percent by a relative who is not a household member. Thus, about eighty-four percent (83.9%) of dwelling units are “family houses” or

ancestral homes owned by a household member or a relative not in the household. The high level of owner occupier status is the result of the desire of families to have their own houses to satisfy prevailing socio-cultural value systems. The data also shows that, in the district, about fourteen percent (13.5%) of all households live in houses owned by other private individuals, some of which are probably rented out.

Less than one percent of households live in dwelling units which are currently being purchased e.g. mortgage (0.8%) and only 0.5 percent lives in dwelling units provided by private employer. Public/ government ownership is also less than one percent (0.7%) of the total dwelling units in the district. Private estate developers and employers both private and government have a lot to invest in order to increase the housing stock in the district.

Table 8.3 which also shows the ownership status of dwelling unit by sex of household heads reveals that, for both male and female headed households, the rank order of proportions for dwelling unit ownership follows the district pattern with some differences in the size of the proportions. For example, 14.2 percent of households headed by males live in houses own by other private individuals. The proportion for female headed households is 12.3 percent.

Again, 52.1 percent of female headed households compared with 63.6 percent male headed households live in houses own by a household member. Also, 33.5 percent of female headed households live in houses own by a relative who is not a household member compared with about 19.2 percent of male headed households. The proportion of male headed households living in dwelling units which are being purchased is 0.8 percent, which is about the same as for female headed households (0.7%).

The table again shows that, the rank order of proportional distribution of house ownership statuses by locality type is about the same in both urban and rural areas. However, there are differences between urban and rural areas in the size of the proportions for each ownership type. For example, the difference in the proportion for urban (30.5%) and rural communities (18.4%) for dwelling units owned by a relative who is not a member of the household is very high. In relation to dwelling units owned by a member of the household, an opposite pattern emerges. A much higher proportion of rural households (68.6%) live in such houses compared to urban households (50.2%). There is only a slight difference between the proportion of urban households (0.7%) and rural households (0.8%) who live in dwelling units being purchased (i.e. mortgaged). However, in the district, a significantly lower proportion of rural households (0.0%) than urban households (0.4%) occupy dwelling units owned by a private employer.

Table 8.3: Ownership status of dwelling by sex of household head and type of locality

Ownership Status	Total		District					
			Total		Male	Female	Urban	Rural
	Country	Region	No.	Percent	headed	headed		
Total	5,467,054	490,515	16,313	100.0	100.0	100.0	100.0	100.0
Owned by household member	2,883,236	260,608	9,704	59.5	63.6	52.1	50.2	68.6
Being purchased (e.g. mortgage)	45,630	3,448	123	0.8	0.8	0.7	0.7	0.8
Relative not a household member	851,630	90,176	3,980	24.4	19.2	33.5	30.5	18.4
Other private individual	1,439,021	116,402	2,208	13.5	14.2	12.3	16.4	10.7
Private employer	83,610	9,509	80	0.5	0.7	0.2	0.4	0.6
Other private agency	21,123	1,390	32	0.2	0.2	0.1	0.4	0.0
Public/Government ownership	118,804	7,138	118	0.7	0.8	0.6	0.9	0.5
Other	24,000	1,844	74	0.5	0.5	0.4	0.5	0.4

Source: Ghana Statistical Service, 2010 Population and Housing Census

8.4 Construction materials

The type of building material used by individuals and institutions depends on cost and availability of material and people's ability to pay for these materials.

Questions on the construction materials for the outer wall (excluding any fence), floor and roof of dwellings are asked for each dwelling unit. For dwelling units that are vacant, at the time of the census, the question on material of floor is skipped. For the Tain District, there are 17,394 responses on material of outer wall and material of roof while there are 16,313 responses for the material of floor (a figure equivalent to the total households in the district) and which also implies occupied dwelling units. This indicates that there are 1,081 or 6.2 percent of the dwelling units were vacant in the district during the 2010 PHC

8.4.1 Construction materials for outer wall

The type of building material used by individuals and institutions also depends on cost and availability of material and people's ability to pay for these materials. The two main materials for the construction of outer walls of a house in Ghana are mud brick/earth and cement/concrete which together accounts for 89.1 percent of wall materials of dwelling units in 2000 and 91.7 percent in 2010. In Brong Ahafo Region, in 2010 the two materials account for 92.6 percent of wall materials (46.5% cement blocks/concrete and 46.1% mud/earth).

Table 8.4 indicates that in the district, the main material for outer wall of dwelling unit is mud brick/earth. As many as 59.0 percent of dwelling units have their outer walls constructed with mud brick/earth and cement block/concrete (35.0%), wood (1.1%) and land Crete (3.4%). All other materials such as burnt bricks, metal sheets/slates/asbestos and bamboo account for 1.5 percent of all materials for the construction of outer walls.

The two main materials used in the district (mud brick/earth, cement block/concrete) apply to urban and rural areas with some significant differences. The use of mud brick / earth for outer wall is far higher in rural areas (74.8%) than urban areas (42.2%). Conversely, the proportion of cement blocks/ concrete houses is far higher in urban (50.9%) than rural localities (20.1%). Similarly, the use of land Crete for outer wall is higher in urban (4.0%) than rural localities (2.8%).

Table 8.4: Main construction materials for the outer wall of dwelling unit by type of locality

Materials for the floor	Total Country	Region	District			
			Total		Urban	Rural
			Number	Percent		
Total	5,817,607	519,342	17,394	100.0	100.0	100.0
Mud brick/Earth	1,991,540	239,284	10,254	59.0	42.2	74.8
Wood	200,594	7,932	192	1.1	1.1	1.1
Metal sheet/Slate/Asbestos	43,708	2,447	61	0.4	0.3	0.4
Stone	11,330	814	30	0.2	0.1	0.2
Burnt bricks	38,237	5,062	115	0.7	1.1	0.2
Cement blocks/Concrete	3,342,462	241,282	6,096	35.0	50.9	20.1
Land Crete	104,270	18,808	590	3.4	4.0	2.8
Bamboo	8,206	523	11	0.1	0.0	0.1
Palm leaf/Thatch grass)/Raffia	38,054	1,694	11	0.1	0.1	0.1
Other	39,206	1,496	34	0.2	0.2	0.2

Source: Ghana Statistical Service, 2010 Population and Housing Census

8.4.2 Main construction materials for floor

Table 8.5 shows that floors are largely made of cement /concrete (65.5%) and earth or mud (33.0%) whereas other materials account for less than two percent in the district.

In terms of locality, cement is the commonest material for the floors which represents 77.8 and 53.5 percent for urban and rural localities respectively. Earth/mud is the second common material for floor (33.3%) with 20.5 percent usage in urban areas and 45.4 percent in rural areas. The use of all other construction materials for floors (stone, burnt brick, wood, vinyl tiles, and ceramic/porcelain or terrazzo/terrazzo tiles) is negligible in both urban and rural areas.

Table 8.5: Main construction materials for the floor of dwelling unit by type of locality

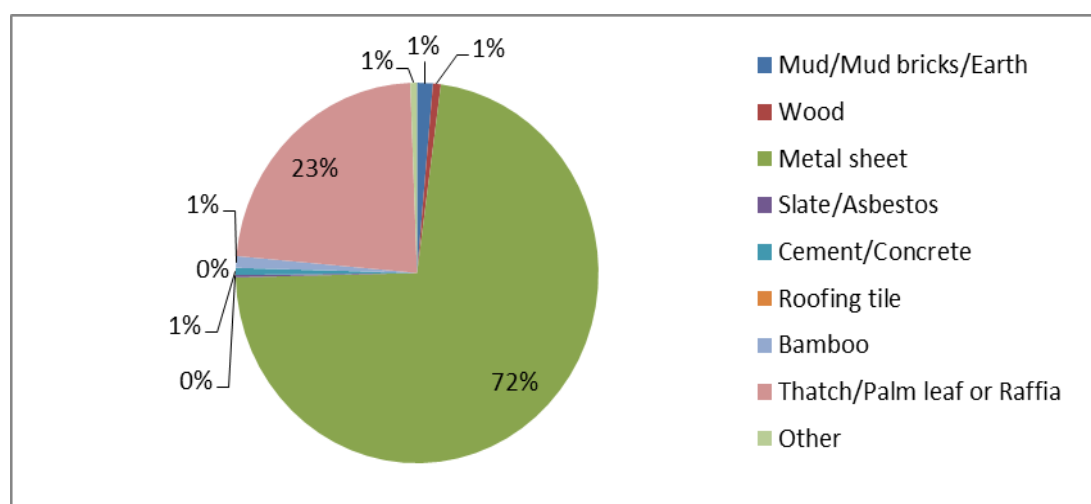
Materials for the floor	Total Country	Region	Type of locality			
			Total		Urban	Rural
			Number	Percent		
Total	5,817,607	594,292	15,629	100.0	100.0	100.0
Mud brick/Earth	1,991,540	241,414	9,961	39.4	39.4	65.9
Wood	200,594	19,221	683	5.0	5.0	4.3
Metal sheet/Slate/Asbestos	43,708	3,170	58	0.6	0.6	0.3
Stone	11,330	835	19	0.1	0.1	0.1
Burnt bricks	38,237	5,273	392	5.3	5.3	2.3
Cement blocks/Concrete	3,342,462	297,909	4,364	47.8	47.8	26.2
Landcrete	104,270	9,463	62	0.0	0.0	0.4
Bamboo	8,206	1,957	34	1.1	1.1	0.1
Palm leaf/Thatch grass)/Raffia	38,054	11,618	17	0.4	0.4	0.1
Other	39,206	3,432	39	0.2	0.2	0.3

Source: Ghana Statistical Service, 2010 Population and Housing Census

8.4.3 Main Construction materials for roofing

Figure 8.2 indicates that an overwhelming majority of the dwelling in the district are roofed with metal sheets (72.6%). The next main materials used for roofing is thatch/palm leaf or raffia (23.0%). Wood, mud/ mud bricks/ earth, cement/ concrete, bamboo and other roofing materials are used on about five percent of the dwelling units in the districts.

Figure 8.2: Main construction material for roofing



Source: Ghana Statistical Service, 2010 Population and Housing Census

Table 8.6 shows that, metal sheets are the main materials for roofing in both urban and rural localities accounting for 92.7 and 53.5 percent respectively. A greater proportion is reported for the use of thatch/palm leaf or raffia for roofing in the rural areas (40.5%) as compared to the urban areas (4.6%).

Table 8.6: Main construction material for roofing of dwelling unit by type of locality

Main Roofing material	Total Country	Region	District			
			Total		Urban	Rural
			Number	Percent		
Total	5,817,607	594,292	17394	100.0	100.0	100.0
Mud brick/Earth	1,991,540	241,414	240	1.4	0.7	2.0
Wood	200,594	19,221	115	0.7	0.7	0.6
Metal sheet/Slate/Asbestos	43,708	3,170	12624	72.6	92.7	53.5
Stone	11,330	835	27	0.2	0.1	0.2
Burnt bricks	38,237	5,273	107	0.6	0.5	0.8
Cement blocks/Concrete	3,342,462	297,909	4	0.0	0.0	0.0
Landcrete	104,270	9,463	177	1.0	0.3	1.7
Bamboo	8,206	1,957	4003	23.0	4.6	40.5
Palm leaf/Thatch (grass)/Raffia	38,054	11,618	97	0.6	0.5	0.6
Other	39,206	3,432	39	0.2	0.2	0.3

Source: Ghana Statistical Service, 2010 Population and Housing Census

8.5 Room Occupancy

The number of rooms occupied by a household includes living rooms, dining rooms and bed rooms. It excludes bathrooms, toilets and kitchen. Since not all rooms available to the household are necessarily used for sleeping purposes, sleeping rooms are the numbers of rooms out of the total rooms that are used for sleeping.

Table 8.7 shows the distribution of sleeping rooms by household size in the district. Information on the relationship between the number of sleeping rooms and a household's size gives the space available per person, and also provides an indication of the extent of overcrowding and adequacy of dwelling stock available. It also reflects the socio-economic status of the household. A standard operational measure of overcrowding should take into account not only the size of households, but also household composition, household structure, number of sleeping rooms and size of the sleeping rooms. Although there is no standardized

operational definition for overcrowding in use in Ghana, an attempt has been made in this section to convey some idea of possible overcrowding based on household size and number of sleeping rooms.

The 2010 PHC results show that in the Tain District, about one-half (45.6%) of the 16,319 households have one sleeping room; 27.4 percent live in two sleeping rooms. Households with three sleeping rooms are 13.5 percent and households sleeping in four or more rooms are 13.4 percent. The distribution of households by size in the district is as follows: out of the total 16,319 households, 1,790 or 11.0 percent are single person households, 1,687 or 10.3 percent are two person households, 1,847 or 11.3 percent are households with three members and 2,162 or 13.3 percent are four member households. There are 1,978 households with five persons representing 12.1 percent and 1,775 households with six members (10.9%). Seven member households make up 8.3 percent (1,355 out of the 16,319 households), 1,027 households (6.3%) have eight members and 687 households (4.2%) have nine members. There are 2,011 households with ten or more members (12.3%)

Analysis of the number of sleeping rooms by household size reveals that almost forty-five percent (44.5%) of five person-households share only one sleeping room and also about one-third (32.8%) of six person-households have only one sleeping room. Sixty percent of seven person-households have only one or two sleeping rooms and fifty percent of eight person-households occupy only one or two sleeping rooms. Over one-third (36.8%) of nine person households have one or two sleeping rooms and also, about one-third (31.7%) of households with ten or more persons sleep in one or two rooms while only forty percent of ten or more person households (40.4%) sleep in three or four rooms. If it is assumed that a household with five or more persons is large, then sleeping rooms in the district are woefully inadequate as indicated by the above statistics.

Among single person households, the highest proportion (89.7%) has one sleeping room; about seven percent (6.7%) have two rooms, while the rest (3.6%) occupy three or more rooms. Three-quarters of two-member households (73.2%) occupy single sleeping rooms, followed by two-room occupants (22.2%).

Generally, irrespective of the household size, single and two rooms are the most available. This phenomenon might be due to scarcity of sleeping rooms as a result of an overall housing deficit and high cost of securing accommodation.

Table 8.7: Household size and number of sleeping rooms occupied in dwelling unit

Household size	Total		Number of sleeping rooms								
	Number	Percent	One room	Two rooms	Three rooms	Four rooms	Five rooms	Six rooms	Seven rooms	Eight rooms	Nine rooms or more
Total	16,319	100	45.6	27.4	13.5	6.7	3.1	1.8	0.7	0.6	0.5
1	1,790	100	89.7	6.7	2.3	0.5	0.2	0.1	0.3	0.1	0.1
2	1,687	100	73.2	22.2	2.6	1	0.2	0.5	0.1	0	0.2
3	1,847	100	64.9	25	7.2	1.5	0.9	0.3	0.1	0.2	0.1
4	2,162	100	53.4	32	10	3.6	0.6	0.2	0.1	0.1	0.1
5	1,978	100	44.5	35.4	13.4	3.9	1.6	0.7	0.3	0.2	0.1
6	1,775	100	32.8	38.1	17.2	6.6	2.6	1.2	0.4	0.5	0.5
7	1,355	100	24.6	36.3	21.9	9.2	4	2.6	1	0.4	0.1
8	1,027	100	19	31.6	25.6	14.5	5	2.8	1	0.4	0.1
9	687	100	9.3	27.5	29.3	17.6	8.6	3.9	1.9	1.5	0.4
10+	2,011	100	9.8	21.9	21.4	19	11.6	7.6	3.1	2.5	3.1

Source: Ghana Statistical Service, 2010 Population and Housing Census

8.6 Access to Utilities and Household facilities

Improving the quality of life of the people continues to be the ultimate goal of successive governments and district level authorities. Access to utilities such as water and lighting could be very fundamental ingredient for a decent way of living and improving the standard of living of people.

8.6.1 Main source of lighting by district

The three main sources of lighting in households in the district are main electricity (46.6%), flashlight/torch (43.8%) and kerosene lamp (7.9%). All other sources including gas lamp, solar energy, electricity from private generator, candle, firewood and others account for less than two percent of sources of lighting in the district.

If the proportion of households that uses electricity (main) and/or generator is a pointer to the overall availability and accessibility of electricity power in the district, then the low availability and/or access to power poses serious development challenges that need to be addressed. Lack of electricity power hampers industrial growth: even cottage industries depend largely on electricity.

The percentage of households using electricity (mains) is 56.5 percent in urban centres compared with 37.0 percent in the rural areas. On the other hand, flashlight is the major source of lighting for households in rural areas (52.6%) compared to urban areas (34.7%). Similarly, kerosene lamp is used more in the rural areas (8.9%) than urban areas (6.9%).

Table 8.8: Main source of lighting of dwelling unit by type of locality

Main source of light	Total country		District			
			Total		Urban	Rural
		Region	Number	Percent		
Total	5,467,054	490,515	16,313	100.0	100.0	100.0
Electricity (mains)	3,511,065	263,890	7609	46.6	56.5	37.0
Electricity (private generator)	36,142	2,372	64	0.4	0.4	0.3
Kerosene lamp	971,807	58,403	1287	7.9	6.9	8.9
Gas lamp	9,378	793	63	0.4	0.6	0.1
Solar energy	9,194	693	28	0.2	0.2	0.1
Candle	41,214	1,662	52	0.3	0.3	0.3
Flashlight/Torch	858,651	159,901	7141	43.8	34.7	52.6
Firewood	13,241	997	38	0.2	0.1	0.3
Crop residue	4,623	272	8	0.0	0.0	0.1
Other	11,739	1,532	29	0.2	0.1	0.2

Source: Ghana Statistical Service, 2010 Population and Housing Census

8.6.2 Main source of cooking fuel used by households

Table 8.9 describes the main sources of fuel used by household for cooking in the district. The table shows that about six percent (6.1%) in the district do not cook. The main source of fuel used by households in the district for cooking is wood accounting for 79.2 percent of the fuel types compared to forty percent use in the country and sixty percent use in the region. Firewood is followed by a distant second in the district by charcoal (12.1%).

The two sources of fuel account for ninety-one percent of cooking fuel for households in the district compared with about seventy-four percent nationwide and about eighty-five percent in the region. With the deforestation associated with the use of firewood and charcoal, every

effort should be made by the district assembly to encourage more household to shift to alternative sources of cooking fuel. Gas, an environmentally friendly source of fuel is used by a mere 1.6 percent of household. Its use is also likely to suffer a setback as a result of rising cost and unstable supply.

Table 8.9 also shows that in terms of rural-urban usage, wood fuel and charcoal are still the most preferred source. However, the use of wood is more pronounced in the rural (85.3%) areas than urban (72.8%) areas. On the other hand, charcoal fuel is more widely used in urban (18.2%) areas than in the rural (6.4%) areas. Gas is also used by more households in urban areas (2.5%) compared with rural areas (0.8%).

8.6.3 Cooking Space used by households

Table 8.9 also describes the main cooking space used by households in the district. The data shows that about eight percent (7.6%) of households do not have cooking space. However, about one in four households (24.5%) have separate room for exclusive use, while nine percent use separate room shared with other households. About thirty-eight percent (37.9%) use the open space in compound and 8.9 percent use a structure with roof but without walls. Another nine percent cook on their verandas. There are an insignificant proportion of households (3.2%) who use all other types of cooking spaces such as enclosure without roof, bedroom/hall/living room and “others”.

Table 8.9: Main source of cooking fuel, and cooking space used by households

Source of cooking fuel/ Cooking space	Total country	Region	District			
			Total		Urban	Rural
			Number	Percent		
Main source of cooking fuel for household						
Total	5,467,054	490,515	16,313	100.0	100.0	100.0
None no cooking	306,118	32,285	1,001	6.1	5.6	6.6
Wood	2,197,083	294,170	12,919	79.2	72.8	85.3
Gas	996,518	36,641	261	1.6	2.5	0.8
Electricity	29,794	1,073	39	0.2	0.2	0.3
Kerosene	29,868	929	12	0.1	0.1	0.1
Charcoal	1,844,290	122,190	1,977	12.1	18.2	6.4
Crop residue	45,292	1,788	67	0.4	0.4	0.5
Saw dust	8,000	1,023	6	0.0	0.1	0.0
Animal waste	2,332	87	2	0.0	0.0	0.0
Other	7,759	329	29	0.2	0.2	0.1
Cooking space used by household						
Total	5,467,054	490,515	16,313	100.0	100.0	100.0
No cooking space	386,883	39,078	1,247	7.6	7.3	8.0
Separate room for exclusive use of household	1,817,018	136,004	3,998	24.5	20.1	28.7
Separate room shared with other household(s)	410,765	47,827	1,466	9.0	13.1	5.1
Enclosure without roof	117,614	7,195	400	2.5	1.7	3.1
Structure with roof but without walls	349,832	41,889	1,447	8.9	7.5	10.2
Bedroom/Hall/Living room)	74,525	1,575	31	0.2	0.2	0.2
Veranda	1,173,946	84,605	1,469	9.0	10.0	8.1
Open space in compound	1,115,464	130,728	6,180	37.9	39.6	36.3
Other	21,007	1,614	75	0.5	0.5	0.4

Source: Ghana Statistical Service, 2010 Population and Housing Census

Although the urban rural rank order of the cooking space used by households follows the district pattern, there are differences in the size of the proportions for the various categories of cooking space. Separate room for exclusive use of household predominates among rural households (28.7%) as compared with urban households (20.1%) but the use of separate room shared with other households is higher among urban households (13.1%) than rural households (5.1%). More households in rural areas (10.2%) than urban areas (7.5%) cook in structures with roof but without walls. About the same proportion of households who have no cooking space are in the urban areas (7.3%) as in rural areas (8.0%).

8.7 Main Source of Water for Drinking and for Other Domestic Use

8.7.1 Main source of water for drinking

Information was collected on main source of drinking water for household members. The three main sources of water, providing the drinking needs of 97.0 percent of households in the district are borehole/pump/tube well (57.2%), Pipe borne water (inside dwelling, outside dwelling, public standpipe) accounting for 33.0 percent and river/stream (6.8%). All other sources such as protected spring, unprotected well, rainwater, and dugout/pond/Lake/dam/canal are used by only three percent of households. The various water sources are classified in this section by their quality level in relation to their health effects on the consumer. According to the Ghana Medium Development Goal Report (2012) an indicator referred to as 'improved water sources' measures the proportion of the population who use any of the following types of water supply for drinking: piped water public tap, borehole or pump, protected well, protected spring or rain water. Improved water sources do not include vendor-provided water, , tanker trucks or unprotected wells or springs.

On the basis of this classification, at the district level, it can be observed from table 8.10 that the proportion of households using various water sources is as follows;

- i. Bore-hole/pump/tube well (57.2%)
- ii. Protected well (0.8%)
- iii. Pipe-born water (inside dwelling, outside dwelling and public stand pipe) (33.0%)
- iv. Protected spring (0.6%)

The proportion using unimproved water sources is as follows:

- i. Unprotected well (0.1%)
- ii. River/streams (6.8%)
- iii. Dugout/Pond/Lake/Dam/Canal (0.6%)
- iv. All others (0.0%)

Broadly, according to the classification nine out of every ten households (91.6%) have access to improved drinking water sources.

Table 8.10: Main source of water of dwelling unit for drinking and other domestic purposes

Sources of water	Total country	Region	District			
			Total		Urban	Rural
			Number	Percent	Percent	Percent
Main source of drinking water for household						
Total	5,467,054	490,515	16,319	100.0	100.0	100.0
Pipe-borne inside dwelling	790,493	29,804	321	2.0	3.5	0.5
Pipe-borne outside dwelling	1,039,667	68,152	2,651	16.2	26.2	6.5
Public tap/Standpipe.	712,375	83,741	2,420	14.8	22.7	7.1
Bore-hole/Pump/Tube well	1,267,688	163,629	9,338	57.2	44.9	69.3
Protected well	321,091	45,990	131	0.8	1.1	0.5
Rain water	39,438	1,044	15	0.1	0.1	0.1
Protected spring	19,345	1,498	101	0.6	0.3	0.9
Bottled water	20,261	777	17	0.1	0.2	0.0
Sachet water	490,283	13,356	49	0.3	0.5	0.1
Tanker supply/Vendor provided	58,400	288	8	0.0	0.1	0.0
Unprotected well	112,567	9,372	44	0.3	0.0	0.5
Unprotected spring	12,222	1,360	9	0.1	0.0	0.1
River/Stream	502,804	64,993	1,115	6.8	0.3	13.3
Dugout/Pond/Lake/Dam/Canal	76,448	6,268	99	0.6	0.1	1.1
Other	3,972	243	1	0.0	0.0	0.0
Other Domestic purpose						
Total	5,467,054	490,515	16,313	100.0	100.0	100.0
Pipe-borne inside dwelling	905,566	32,149	310	1.9	3.4	0.4
Pipe-borne outside dwelling	1,089,030	67,219	2,652	16.3	26.0	6.7
Public tap/Standpipe	704,293	83,208	2,404	14.7	22.6	7.1
Bore-hole/Pump/Tube well	1,280,465	156,073	8,997	55.1	44.2	65.8
Protected well	465,775	57,094	145	0.9	1.3	0.5
Rain water	39,916	965	52	0.3	0.1	0.6
Protected spring	18,854	1,626	99	0.6	0.3	0.9
Tankersupply/Vendor provided	100,048	651	15	0.1	0.2	0.0
Unprotected well	152,055	10,956	57	0.3	0.2	0.5
Unprotected spring	15,738	1,567	16	0.1	0.0	0.2
River/Stream	588,590	70,604	1,382	8.5	1.4	15.4
Dugout/Pond/Lake/Dam/Canal	96,422	7,421	168	1.0	0.3	1.7
Other	10,302	982	22	0.1	0.0	0.2

Source: Ghana Statistical Service, 2010 Population and Housing Census

In terms of locality, Borehole/Pump/Tube well is the major source of drinking water for both rural and urban centres accounting for 69.3 and 44.9 percents respectively. Pipe bore outside dwelling and public tap are the next major source of drinking water in the urban areas accounting for 26.2 and 22.7 percent respectively while in the rural areas it is Public tap and Pipe-borne outside dwelling contributing 7.1 and 6.5 percents respectively.

8.7.2 Main source of water for domestic purposes

The same three main sources of water for drinking are also for domestic use but in slightly different proportions by households. For example, although the majority of households use borehole/pump/tube well for both drinking and other domestic purposes, the proportion of households using it for drinking (57.2%) is slightly higher than for other domestic use (55.1%). Households that use river/stream for drinking is lower (6.8%) than the proportion that use it for other domestic purposes (8.5%).

With respect to rural and urban distribution for domestic use of water, about the same proportion of households who use treated pipe borne water (inside dwelling, outside dwelling, public standpipe) for drinking in urban areas (52.4%) and rural areas (14.1%) also use it for other domestic purposes 52.2 percent in urban areas and 14.2 percent in rural areas. A lower proportion of households in urban areas (44.9%) compared with rural areas (69.3%) use Borehole/Pump/Tube well as the main source of water for domestic purpose. Twice more households in rural areas (15.4%) use river/stream for domestic purposes than urban households (8.5%).

8.8 Bathing and Toilet Facilities

8.8.1 Toilet Facilities

Table 8.11 presents data on type of toilet facility used by household by type of locality. Information on toilet facilities is considered important for housing as well as public health policy. Toilet facilities reported in the 2010 PHC can be classified into two categories in relation to their location, accessibility and human contact with the waste. These are: Built or constructed facilities in or around the house, which can be public or private. Both can be flush toilets (W.C), pit latrine, KVIP or bucket/pan latrines. Public toilets are for communal or public use (paid or free use). No facility means that there is no facility of any kind available for the use of the household and members use places other than built or constructed privately or publicly owned facilities which include the bush, field, rivers or streams. Some people even use “chamber pot” or other small receptacles such as plastic bags and disposed of these in all sorts of places including uncompleted building, gutters and open fields.

Whereas in the year 2000 country wide, 20.2 percent had no access to any specific facility, the proportion in 2010 is 19.3 percent thus recording a slight improvement. In the Brong Ahafo region for 2010, the proportion with no facility is 17.8 percent, an increase over the 2000 proportion of 14.5 percent. Although the statistics for the region is not disaggregated by district it reveals a deteriorating situation in access to toilet facilities.

Out of a total 16,313 households in the district, 30.1 percent have no specific toilet facilities and rather places such as bushes, fields, uncompleted buildings or riverbanks as their places of convenience. This may hygienically not be a good practice for the health of the people. Only 5.2 percent of the households have KVIP and 44.1 percent use the public toilets (which could be W.C, KVIP, Pit or bucket). Public toilets and “no specific toilet” i.e. bush, etc. are thus the two most used toilet facilities in the district accounting for almost three quarters (74.2%) of all households’ access to human waste disposal facilities. W.C. toilets are used by less than two percent (1.5%) of all the households in the district, possibly because of the need of piped water inside the house to facilitate its efficient and convenient use.

In terms of locality of residence, there are significant variations in the proportions of households who use the various types of toilet facilities. More rural households have no access to any kind of facility (38.3%) compared with their urban counterparts (21.3%). Fifty-one percent (51.0%) of urban households patronize public toilet facilities as compared to about two in five (37.4%) of rural households. However the use of pit latrines is slightly higher among rural household (21.1%) as compared to urban households (16.3%). The proportions using KVIP is about four times higher among urban (9.2%) households as compared to rural households (1.4%). W.C inside the dwelling is being used by 1.7 percent of urban households and 1.3 percent of rural households.

8.8.2 Bathing facilities

Table 8.11 also provides information on bathroom facilities used by households in the district. Bathroom facility is one of the major needs in every home. Ideally each household must have a bathing facility exclusive for its own use. However, in the district most households live in compound houses (rooms) in urban areas or Huts/Buildings (same compound or different compound) especially in the rural areas. Exclusive bathroom is therefore not often possible. In the district, bathing facilities are shared by about two out of every five households (shared bathroom in the same house (25.2%) and shared open cubicle (16.8%)) while another ten percent (10.5%) avail themselves of the bathroom facility in another house. About twenty-six percent (25.5%) of the 16,313 have own bathroom for exclusive use and 7.9 percent of households use private open cubicles. Thirteen percent of households use the open space around the house for bathing. All the other bathing facilities such as public bathhouse, river/pond/lake/dam and “other” are used by less than one percent of households.

Table 8.11: Type of toilet facility and bathing facility used by household by type of locality

Toilet facility/ Bathing facility	Total		Urban		Rural	
	Number	Percent	Number	Percent	Number	Percent
Toilet facility used by household						
Total	16,313	100.0	7,968	100.0	8,345	100.0
No facilities (bush/beach/field)	4,906	30.1	1,695	21.3	3,211	38.5
W.C.	243	1.5	138	1.7	105	1.3
Pit latrine	3,056	18.7	1,298	16.3	1,758	21.1
KVIP	852	5.2	736	9.2	116	1.4
Bucket/Pan	21	0.1	11	0.1	10	0.1
Public toilet (WC/KVIP/Pit/Pan, etc.)	7,189	44.1	4,066	51.0	3,123	37.4
Other	46	0.3	24	0.3	22	0.3
Bathing facility used by household						
Total	16,313	100.0	7,968	100.0	8,345	100.0
Own bathroom for exclusive use	4,155	25.5	1,759	22.1	2,396	28.7
Shared separate bathroom in the same house	4,118	25.2	2,958	37.1	1,160	13.9
Private open cubicle	1,283	7.9	351	4.4	932	11.2
Shared open cubicle	2,734	16.8	1,361	17.1	1,373	16.5
Public bath house	75	0.5	38	0.5	37	0.4
Bathroom in another house	1,719	10.5	727	9.1	992	11.9
Open space around house	2,173	13.3	748	9.4	1,425	17.1
River/Pond/Lake/Dam	19	0.1	4	0.1	15	0.2
Other	37	0.2	22	0.3	15	0.2

Source: Ghana Statistical Service, 2010 Population and Housing Census

In terms of locality, more households share bathing facilities in urban than rural areas. In urban areas, about fifty-four percent (54.2%) of households share bathing facilities (37.1 percent for shared separate bathhouse in the same house and 17.1 percent for shared open cubicle). However in the rural areas, about thirty percent of households share bathing facilities of which 13.9 percent use shared separate bathhouse in the same house and 16.5 percent use shared open cubicle. Also, about twenty-nine percent of rural households (28.7%) have own bathroom for exclusive use compared with 22.1 percent of urban households. Despite this, more rural households (17.1%) use the open space around the house for bathing compared with 9.4 percent of households. This is probably because of availability of large space in the houses in rural areas where 41.8 percent of households live in separate houses.

Bathroom in another house is used by a slightly higher proportion of rural (11.9%) than urban (9.1%) households. Public bathhouse is not much patronized by either urban (0.5%) or rural (0.4%) households.

8.9 Method of Waste Disposal

8.9.1 Solid waste disposal by district

As with the disposal of human waste, few households provide for the hygienic and adequate disposal of solid waste. It should be pointed out that the problem of improper solid waste disposal is a national concern and not specific to the Brong Ahafo region or the Tain District. The 2010 PHC shows that in the country as a whole solid waste is disposed of mostly either at public dump sites (open or container) or elsewhere at the households convenience “where waste treatment may not be efficient or even exist”.

Table 8.12 reveals that, the bulk (95.9%) of solid waste generated in the district are either disposed of in a public dump (open space, 72.2 percent) and public dump (container 11.9 percent) or are dumped elsewhere i.e. indiscriminately (11.8%). A total of about four percent (3.6%) of households either have their solid waste collected (0.8%), burnt (1.5%) or buried (1.3%).

In terms of locality, improper solid waste disposal is generally higher among rural households where 18.9 percent dump solid waste indiscriminately compared with about four percent (4.3%) of urban households. Both urban and rural households dump solid waste at public dump sites (open space or container) but in slightly different proportions. About seventy-three percent (73.3%) of rural households compared with 71.0 percent of urban household dispose of their solid waste at public dumps (open space) while about twenty-one percent (20.6%) of households in urban area dispose of solid waste at public dump (containers) as against only 3.7 percent of rural households.

8.9.2 Liquid waste disposal

Liquid waste disposal in the district has not been developed. This is so because as observed in table 8.12, almost one-half (45.4%) of households dispose liquid waste by throwing it onto the compound. An equally high percentage of households (48.7%) also dispose of their liquid waste by throwing it on the streets/outside and 2.5 percent throw liquid waste into gutters. All these methods are not hygienic enough. Less than four percent (3.1%) of the households in the district dispose of their liquid waste through a sewerage system or through a drainage system into a gutter or through drainage into a pit (soak away).

In terms of locality of residence, it is observed that, 58.1 percent of households in the urban areas throw liquid waste on to the street/outside, and for another 35.7 percent of households, liquid waste is just thrown onto the compound. In comparison, for rural households almost fifty-five percent (54.7%) dispose their liquid waste onto the compound and 39.7 percent throw liquid waste onto the street/outside.

Table 8.12: Method of solid and liquid waste disposal by type of locality

Method of waste disposal	Total		Urban		Rural	
	Number	Percent	Number	Percent	Number	Percent
Solid Waste						
Total	16,313	100.0	7,968	100.0	8,345	100.0
Collected	124	0.8	76	1.0	48	0.6
Burned by household	244	1.5	115	1.4	129	1.5
Public dump (container)	1,946	11.9	1,640	20.6	306	3.7
Public dump (open space)	11,774	72.2	5,657	71.0	6,117	73.3
Dumped indiscriminately	1,919	11.8	340	4.3	1,579	18.9
Buried by household	205	1.3	75	0.9	130	1.6
Other	101	0.6	65	0.8	36	0.4
Liquid waste						
Total	16,313	100.0	7,968	100.0	8,345	100.0
Through the sewerage system	273	1.7	116	1.5	157	1.9
Through drainage system into a gutter	119	0.7	73	0.9	46	0.6
Through drainage into a pit (soak away)	115	0.7	23	0.3	92	1.1
Thrown onto the street/outside	7,947	48.7	4,630	58.1	3,317	39.7
Thrown into gutter	401	2.5	256	3.2	145	1.7
Thrown onto compound	7,409	45.4	2,848	35.7	4,561	54.7
Other	49	0.3	22	0.3	27	0.3

Source: Ghana Statistical Service, 2010 Population and Housing Census

CHAPTER NINE

SUMMARY OF FINDINGS, CONCLUSIONS AND POLICY RECOMMENDATIONS

9.1 Introduction

This chapter presents the summary of the main findings of the analysis of demographic and socio-economic characteristics of Tain district in the Brong Ahafo region. Conclusions based on the results are presented and policy implications outlined.

9.2 Summary of Findings and Conclusion

9.2.1 Demographic Characteristics

The analysis shows that, the district population is 88,104 of which 49.4 percent are males just like the regional and the national percentages both of which indicated a greater percentage of females than males.

About fifty percent (51.5%) of the population reside in urban communities. The average population density is 48.1 persons per square kilometer. Also, there are more females (50.6%) than males (49.4%) in the district.

The age-structure of the population in the district indicates that a large proportion of the population (40.3%) is below age fifteen (0-14 years).

The population structure indicates that the district has a young population typical of most developing countries. The district has total dependency ratio of 85.5 though it is relatively lower for urban areas (81.1) than rural areas (90.4). In general, the population pyramid of the district reflects the broad-base pattern, characteristic of a developing nation with substantial proportion of its population for both males (40.3%) and females (39.3%) being young and under 15 years of age. This type of age structure has a built-in momentum for the growth of the district's population.

Over twenty percent (22.1%) of the total population (88,104) of the Tain District are migrants. However 7,030 representing (36.1%) were born elsewhere within the Brong Ahafo Region whereas 12,422 persons representing 63.9 percent were born elsewhere in another region in Ghana.

For those born elsewhere in another region, the data shows that, the largest proportion (62.2%) comes from the Upper West Region.

The Total Fertility Rate in the Tain District for women aged 15-49 years is 3.5 births per woman indicating that a woman in the district would have, on the average, 3.5 children (almost 4 children) in her lifetime almost the same as that of the Brong Ahafo Region (3.6).

More than four in every five children (82.5%) given birth to in the district survive. However there is very little variations among the various age groups with the highest child survival of 92.0 percent recorded for women within the age groups 20-24 and 25-29 years.

9.2.2 Socio-Economic Characteristics

With a household population of 87,245 and a 16,313 number of households, the district recorded an average household size of 5.3 persons.

Households that are headed by males (64.1%) are almost about twice that of female counterparts (35.9%).

Regarding the composition of households, 18.7 percent of the population in the households is heads, while 42.3 percent are their biological children. Spouses constitute 8.7 percent whereas other relatives form 8.3 percent of the household population.

The nature of the household structure underscored the prevalence and the strength of the extended family system where more than one fifth (27.3%) live in various extended family households compared to 21.5 percent living in nuclear households.

Information from the 2010 Population and Housing Census also revealed that 42.8 percent of the population 12 years and older have ever been married; 42.5 percent are married or living together, while 5.7 percent are separated or divorced and 5.1 percent are widowed.

There are substantial variations between males and females. For example, by age 25-29 years, only 17.9 percent of females have never married compared to 42.7 percent of males.

Whereas only about one in three females (31.5%) have never been married, the proportion for males is about fifty percent (49.3%). An opposite trend emerges in relation to widowhood where females widowed are about seven times higher than their male counterparts (8.8% versus 1.2%).

The percentage of the population who are widowed increase with age to the extent that by age 65 years and over about one out of every three (34.7%) are widowed.

The district recorded over ninety percent (98.1%) of its population being Ghanaian citizens either by birth (96.0%), naturalization (0.5%) or by dual nationality (1.6%).

A greater percentage of the population in the district are Christians (71.9%) even though the percentage of Islam is also quite sizeable (15.5%) while about three percent (2.9%) of the population are Traditionalist.

Out of a total of 61,058 persons who are 12 years and older, only 64.0 percent are literate. Literacy in only English is 20.0 percent whereas those who are literate in English and any other Ghanaian language are more than half of the literate population (71.2%).

Almost eighty percent (81.2%) of the population 15 years and older in the district (52,544), are economically active. Among the economically active population, 98.7 percent are employed with less than two percent (1.3%) being unemployed.

There is very little difference in the proportion of economically active males (82.4%) and females (80.0%). About the same proportions of males and females are currently employed (98.7%).

A large majority of the economically not-active population (87.4%) fall into three main categories namely full time education (50.4%), doing household chores (22.8%) and too old/young to work (14.2%).

The proportion employed increased sharply with increasing age from 49.7 percent for the age group 15-19 to 73.2 percent at the age group 20-24 years and takes a peak at 96.2 percent in the age group 45-49 years. It then reduced slightly to 95.6 percent at age 50-54 years and then fell continuously to 69.2% at age 65 years and older.

Agriculture and related work is the major occupation in the district, accounting for 80.8 percent of the district's employed population. Some proportions of the employed persons are engaged as service and sales workers (6.2%) and Craft and related trades workers (5.6%). Professional workers constitute only 2.6 percent of the employed population.

The 2010 Population and Housing Census revealed that in the district, there were more males employed (82.3%) in the agriculture, Forestry and Fishing industry compared to females (76.5%). However, there are more females in Manufacturing and Wholesale & retail accounting for 5.5 and 7.0 percent respectively compared to their male counterparts who recorded 2.3 percent and 3.2 percent in the Manufacturing and wholesale & retail industries respectively.

The informal private sector is by far the largest employer in the district (95.2%), followed by public (government) sector (3.1%). Less than 2 percent of employees are in private formal sector (1.4%).

9.2.3 Information Communication Technology

Out of the total population of 59,021 persons who are 12 years and older in the district, only 5, 777 representing 35.1 percent have their own mobile phones. A little over forty percent (40.5%) of the total male population of 28,943 own mobile phones. The situation is not better for their female counterparts as the computed statistic indicate that slightly less than thirty percent (29.9%) of the total female population who are twelve years and older own mobile phones. Internet use (1.1%) and laptop/computer ownership by households (2.4%) are very low in the district.

9.2.4 Disability

In the district, 1,738 representing two percent of the population reported a total of 2,433 disabilities yielding an average of 1.4 reported disabilities per person. That is, about 41.0 percent have more than one form of disability.

Sight impairment is the main type of disability from which most of the disabled suffer accounting for 34.6 percent of reported disabilities in the district. About the same proportion (31.5%) of PWDs suffer from physical disabilities.

9.2.5 Agriculture

Out of 16,313 households in the district, 14,323, representing 87.8 percent are engaged in agriculture. About three out of four (83.7%) of the urban households in the district are engaged in agriculture whereas close to ninety-two percent (91.7%) of the rural households are also engaged in agriculture. The two traditional activities of crop farming and livestock rearing are prominent in the district and in both urban and rural communities.

Livestock rearing which is the one of the most important agricultural activity in the district indicates that majority of livestock keeper's rear chickens (46.1%) and Goats (30.2%).

9.2.6 Housing

The district has 12,283 houses and 16,313 households. The number of persons per house in the district is 7.3. This is higher than the regional average of 7.0. The population per house for the urban areas (8.8) is relatively higher than that of the rural areas (6.0).

Compound house (rooms) is the most common type of dwelling accounting for 44.1 percent of the total number of dwellings in the district. This is followed by separate house (37.2%). Huts/ buildings rank a distant third of 9.8 percent.

Analysis of number of sleeping rooms by household size reveals the following. About 96.4 percent of single person households have one or two sleeping rooms.

The three main sources of lighting in households in the district are main electricity (46.6%), flashlight/torch (43.8%) and kerosene lamp (7.9%),

The percentage of households using electricity (mains) ranges from 55.6 percent in urban centres to as low as 37.0 percent in the rural areas. On the other hand, flashlight is the major source of lighting for households in rural areas (52.6%) compared to urban areas (34.7%)

The main source of fuel for cooking is wood accounting for 79.2 percent of the fuel types in the district.

Borehole is the major source of drinking water for both rural and urban centres accounting for 69.3 and 44.9 percents respectively

Out of a total 16,313 households in the district, 30.1 percent have no toilet facilities and rather use the bushes or fields as their places of convenience. This may hygienically not be a good practice for the health of the people. Only 5.2 percent of the households have KVIP and about 44.0 percent use the public toilets. W.C. toilets are used by less than 2.0 percent (1.5%) of all the households in the district.

Liquid waste is mostly thrown onto the street by most (48.7%) of the households. An equally high percentage of households (45.4%) dispose of their liquid waste by throwing it onto the compound which are all not hygienic enough

9.3 Conclusion

The indicators show that, for a number of the demographic characteristics, the values for the district are not close to those of the region. The population density of the district 48.1 persons per square kilometer is lower than the regional average of 58.4 persons per square kilometre.

The sex ratio of 97.6 is also not much at variance with the regional figure (98.2) showing more females than males. The district has an urban population of 51.5 percent.

A mortality indicator for children under-five which is the probability of dying between birth and the fifth birthday is higher than the regional figure. The under- five mortality for the district is 16 whereas that of the region is 13 deaths per 1,000 live births.

The fertility indicators (CBR, GFR and TFR) for the district which are 24.3, 103.4 and 3.5 also compare unfavorably with the regional averages of 26.3, 105.9, and 3.58 respectively.

The district falls low in most of the indicators that measure socio-economic development, such as level of education, literacy and accessibility to social services. Illiteracy is very much

higher in the district (36.0%) for the population 11 years and older than for the region as a whole (30.2%).

Literacy in English only or in both English and Ghanaian language, which is effectively the functional ones vis-à-vis much of published materials, is only about 71.2 percent for the district compared to about 69.0 percent for the region.

Educational attainment is consistently lower in the district, at every level, compared to the regional pattern.

Professional/Technical, Administrative, Managerial as well as Clerical occupations are all twice as high in the region (6.9%) as in the district (3.9%). Agriculture, on the other hand, is the occupation of about three in four for the district (80.8%), compared with three in five (61.3%) for the region.

The proportion of the private formal sector in the district (1.4%), however, is only about one-third of the region (3.5%).

Housing quality is far poorer in the district than for the region. Electricity availability to households is lower for the district (46.9%) than the region (54.3%).

Toilet facilities show the greatest discrepancy. Whereas about two in ten households regionally have no toilet facility (17.8%), about three in ten households in the district (30.1%) have no toilet facility.

9.4 Policy Recommendations

The overall level of development and demographic structure in the country conceals very marked differences between and within regions, districts, rural and urban areas. It was to effectively address the imbalance in development that the decentralization programme was initiated in 1984 with the District Assemblies established to “initiate and coordinate the processes of planning, programming, budgeting and implementation of district plans, programmes and projects” relevant to the needs of particular districts and communities.

In 1993, the District Assemblies’ Common Fund was established to give metropolitan, municipal and District Assemblies more financial autonomy to actually make decisions at the local level. It has since become an important tool for the achievement of fiscal decentralization in particular and overall decentralization in general.

Most of the economic indicators from the 2010 Population and Housing Census seem to portray that Tain District is one of the poorest in the Brong Ahafo Region. The characteristics of the districts (demographic, social, economic, housing conditions and community facilities) in the district therefore need to be taken into account in deciding on the broad areas for policy strategies and interventions.

The following recommendations are made based on the findings of the report:

The age and structure of the population shows a relatively young population, which has the potential for further growth. The results may have serious cost implications for the provision of social services, particularly education and health.

It is therefore recommended that the integration of population variables which has the potential of stalling the rate of growth of the population such as effective family planning methods be considered a priority in the district development planning. Reproductive health programmes

have to be incorporated of the educational programme. The 2000 Adolescent Reproductive Health Policy will have to be implemented as a component of the educational curricula.

In the district, there is a slightly higher male preponderance in the younger age segments while females tend to be in the majority in the economically active age segment and the older ages. The birth rate may be the principal explanation for differences in age composition. There is therefore the need to continue with, and intensify, fertility education programmes that target child spacing and contraceptive practices which are necessary to reduce the high level of fertility in the district. Non-contraceptive and non-family planning practices and attitudes that reduce high fertility also need to be encouraged and sustained.

The districts and various population sub-groups of the region present some characteristics that require careful policy measures that can meet peculiar needs of the various population subgroups. Generally gender dimensions of policies must not be underestimated

Generally, the approach is the adoption of one policy- a straight jacket- that must fit all.

Given that the average household size of 5.3 it seems that the ideal housing situation would be an average of about four rooms per household. If room occupancy is examined from the angle of crowding, however, it would seem that two rooms should be a minimum for a household of five persons. It is, however, evident from the data that most households have inadequate sleeping rooms, particularly when personal property and household belongings occupy a sizable portion of sleeping rooms.

On the basis of a rough generalization that the higher the standard of living in a district, the larger the average number of rooms in the housing units, then the Tain District will be the most deprived in terms of room occupancy.

To measure crowding, it is necessary to calculate the number of persons per room. In general, one person or fewer per room may be regarded as desirable and three or more persons per room may be defined as “crowded” housing. By this definition, therefore, sleeping rooms in the Tain District are crowded.

Investment in the education of young people must be emphasized as a key policy as is already being done but with a long-term plan that ensures their employment as well.

While the district has very suitable land for cultivating yam and pepper in commercial quantities, the road network has always been in such a deplorable state that the little that is produced can hardly be transported to large urban areas for sale.

The consensus often reached by analysts is that the poor performance of the agricultural sector is at the core of the growth problem in Ghana as a whole and hence the need to seriously tackle the structural problems of the sector. In this respect, and on the basis of the results from the analysis, the following are suggested:

Sustained efforts need to be intensified and focused towards modernization of agricultural production, using appropriate technologies to increase productivity and output. This may have to imply a vigorous implementation of the Youth in Agriculture Programmes in the district.

Agricultural workers need to be assisted to enable them acquire implements and small –to-medium scale irrigation equipment that will facilitate farming throughout the year. Industrial

establishments need to be based on locally available inputs that will generate employment and make them more efficient.

The sizes of industries need to be carefully assessed vis-à-vis the available market so that the appropriate technology and the right proportions of factor inputs are employed. Attempts at producing the requisite middle-level manpower, through the establishment of Polytechnics, must be sustained and strengthened to enhance technological proficiency.

Projects and programmes need to be developed and implemented in the district. Accessible and easily recoverable soft loan facilities should be provided to identifiable private sector organizations and employers to create employment and ensure increased productivity per worker.

An optimum strategy for reducing migration in the region and increasing rural income would be to:

- increase the private component of rural income by creating jobs, by direct income Policy, by tax reductions or by price policy and or
- b) increase the social component of rural income by investing in infrastructure, Especially rural and urban roads, in the district

The Tain district one of the most deprived districts in the region has very good agricultural land. It is important for stakeholders in the region to seriously work towards the rebuilding of the trunk roads to linkup the various communities in the district. That way, food produced in the district will not be left to waste.

REFERENCES

Ghana (Statistical Service (2005) *2000 Population Data Analysis, Vol. 1: Socio-economic and Demographic Trends Analysis* Accra:

Ghana Statistical Service. Ghana Statistical Service (2012) *2010 Population and Housing Census: Summary Report of Final Results* Accra: Ghana Statistical Service.

Central Bureau of Statistics, 1960 and 1970 Census Reports

Ghana Census Office (1963) *1960 Population Census of Ghana Volume I*, Accra: Ghana Census Office.

Ghana Statistical Service (GSS), ICF Macro. 2010. 2003, 2008 *Ghana Demographic and Health Survey*. Calverton, Maryland, USA: ICF Macro.

Ghana Statistical Service, (2009). 2010 Population and Housing Census, Enumerator's Manual.

Ghana Statistical Service; Ministry of Health; UNICEF, Ghana and Macro International GSS, Multiple Indicator Cluster Survey 2006

Ministry of Education, Ghana, 2010/11 Annual Report

United Nations, (2008). Principles and Recommendations for Population and Housing Censuses. Revision 2.

APPENDICES

Table A1: Total population, sex, number of households and houses in the 20 largest communities

Community Name	Sex			House holds	Houses
	Total	Male	Female		
Badu	12,127	5,710	6,417	2,206	1,259
Seikwa	9,166	4,149	5,017	1,745	1,144
Debibi	6,656	3,272	3,384	964	724
Nsawkaw	6,568	3,239	3,329	1,490	848
Brodi	5,449	2,736	2,713	716	508
Brohani	5,401	2,678	2,723	961	576
Tainso	2,305	1,162	1,143	397	346
Asuafu	2,177	983	1,194	432	335
Menji	2,118	1,085	1,033	371	245
Atomfuoso	2,050	978	1,072	419	328
Hani	1,853	925	928	408	305
Bepoase	1,749	835	914	349	293
Namasa	1,727	811	916	320	248
Yabraso	1,621	847	774	368	380
Kogua	1,347	749	598	186	181
Nkona Kwagya	1,270	655	615	372	228
Pokukrom	1,241	659	582	167	177
Kwame Tenten	1,094	591	503	205	186
Nasana	1,079	477	602	232	191
Muramuraso	1,012	522	490	167	113

Source: Ghana Statistical Service, 2010 Population and Housing Census

Table A2: Population by age group in the 20 largest communities

S/No.	Community Name	Age Group																
		All Ages	0-4	5-9	10-14	15-19	20-24	25-29	30-34	35-39	40-44	45-49	50-54	55-59	60-64	65-69	70-74	75+
1	Badu	12,127	1,380	1,499	1,681	1,434	1,121	966	792	598	509	427	433	295	244	151	185	412
2	Seikwa	9,166	965	1,205	1,344	1,189	821	639	514	423	355	291	328	200	223	117	208	344
3	Debibi	6,656	737	883	944	830	662	559	401	329	263	177	170	145	106	93	111	246
4	Nsawkaw	6,568	903	772	806	702	528	533	484	384	329	262	222	140	113	80	103	207
5	Brodi	5,449	502	656	659	691	594	495	366	326	216	211	180	108	97	91	73	184
6	Brohani	5,401	893	901	658	508	387	351	309	273	248	194	154	96	111	44	88	186
7	Tainso	2,305	262	263	314	246	173	178	171	119	155	116	79	64	52	26	31	56
8	Asuafu	2,177	257	283	313	279	176	127	132	86	108	68	85	61	42	31	52	77
9	Menji	2,118	283	284	301	239	149	121	106	96	90	90	70	47	56	21	60	105
10	Atomfuoso	2,050	315	276	283	211	166	163	128	118	88	74	70	36	43	19	19	41
11	Hani	1,853	257	280	238	169	128	116	106	93	105	68	79	49	44	22	38	61
12	Bepoase	1,749	224	239	234	214	150	117	85	74	64	54	62	57	39	19	41	76
13	Namasa	1,727	270	305	219	168	103	104	96	74	75	59	52	22	30	15	35	100
14	Yabraso	1,621	262	203	180	153	119	131	109	130	73	63	50	24	41	17	20	46
15	Kogua	1,347	264	239	169	116	98	101	97	67	44	43	29	14	15	13	24	14
16	Nkona Kwagya	1,270	194	180	122	138	108	115	103	81	54	36	38	23	19	14	25	20
17	Pokukrom	1,241	111	152	152	112	102	102	82	103	81	65	52	34	50	16	10	17
18	Kwame Tenten	1,094	173	165	147	120	75	64	53	63	58	53	29	35	11	14	11	23
19	Nasana	1,079	130	138	178	146	68	74	42	46	36	38	32	40	18	14	22	57
20	Muramuraso	1,012	185	177	114	91	86	85	66	50	40	37	23	16	5	10	12	15

Source: Ghana Statistical Service, 2010 Population and Housing Census

LIST OF CONTRIBUTORS

Project Secretariat

Dr. Philomena Nyarko, Government Statistician
Mr. Baah Wadieh, Deputy Government Statistician
Mr. David Yenukwa Kombat, Acting Census Coordinator
Mr. Sylvester Gyamfi, DISDAP Project Coordinator
Mrs. Abena A. Osei-Akoto, Data Processing
Mr. Rochester Appiah Kubi Boateng, Data Processing
Mrs. Jacqueline Anum, Data Processing
Mrs. Samilia Mintah, Data Processing
Mr. Yaw Misefa, Data Processing
Mr. Ernest Enyan, Data Processing
Mr. Omar Seidu, Regional Statistician
Ms. Hanna **Frempong Konadu**, Formatting/Typesetting
Mrs. Mary Gyau, Formatting/Typesetting

Writers

Mr. Gideon Awuah
Mr. Frederick Apraku Amoateng

Consultant

Dr. ZMK Batse

Editor/ Reviewers

Dr. Ernest Kunfaa
Mrs. Augusta H. Okantey
Mr. George Agbenyo